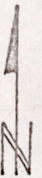
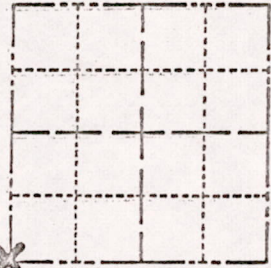


363

Survey Monument Record

TYPE OF MONUMENT: STANDARD HARRISON
 STATE PLANE COORDINATES: N _____
 E _____
 ELEVATION — M.S.L. DATUM: _____
 THETA ANGLE: _____
 FIELD BOOK: 111 PAGE 11

SECTION 17
 TOWN 17 N
 RANGE 6 E



LOCATION
(Indicated by 'X')

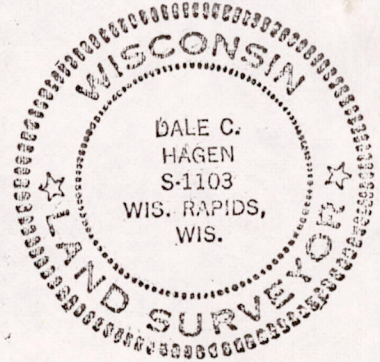
SEAL:

BASIS FOR MONUMENT LOCATION

(Use reverse side if necessary)

Show info such as: History of corner, with reference to Vol. and pg, dates, surveyor; exact description of monument replaced; if location computed, by taped or EDM traverse; landowner remarks, etc.

Replaced existing 1" by 30" iron pipe in shoulder of State Highway '13'. Traverse of section indicated it to be properly positioned. Replaced with standard Harrison monument.



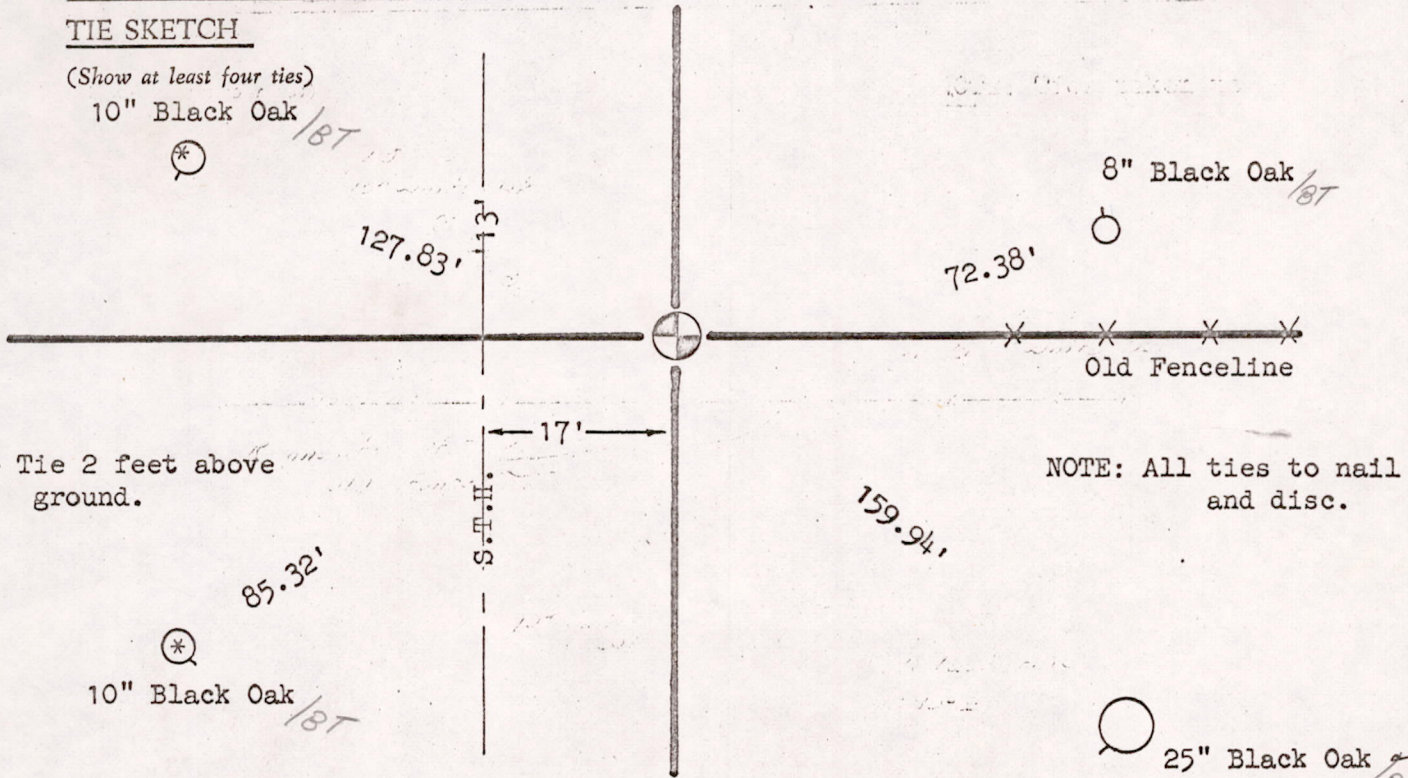
CERTIFIED CORRECT:

Dale C. Hagen
 Registered Land Surveyor
 DATE: April 24, 1974

Everything O.K. 10-18-75 SS - DM

TIE SKETCH

(Show at least four ties)



NOTE: All ties to nail and disc.

M1517170600008