

ADAMS COUNTY

Survey Monument Record

TYPE OF MONUMENT: HARRISON ?

STATE PLANE COORDINATES: N \_\_\_\_\_

E \_\_\_\_\_

ELEVATION — M.S.L. DATUM: \_\_\_\_\_

THETA ANGLE: \_\_\_\_\_

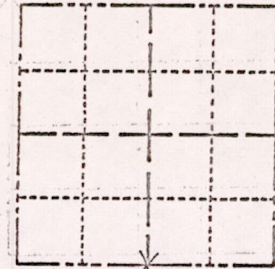
FIELD BOOK: 26 PAGE 120

CORNER NO. 219

SECTION 19

TOWN 17

RANGE 6



LOCATION  
(Indicated by 'X')

SEAL:

BASIS FOR MONUMENT LOCATION

(Use reverse side if necessary)

Show info such as: History of corner, with reference to Vol. and pg, dates, surveyor; exact description of monument replaced; if location computed, by taped or EDM traverse; landowner remarks, etc.

Computed from taped traverse.  
Found no evidence of old corner  
when dug by backhoe.

*So called Harrison looks more like R.R. spike*

*9.27.75 SS*



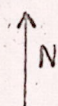
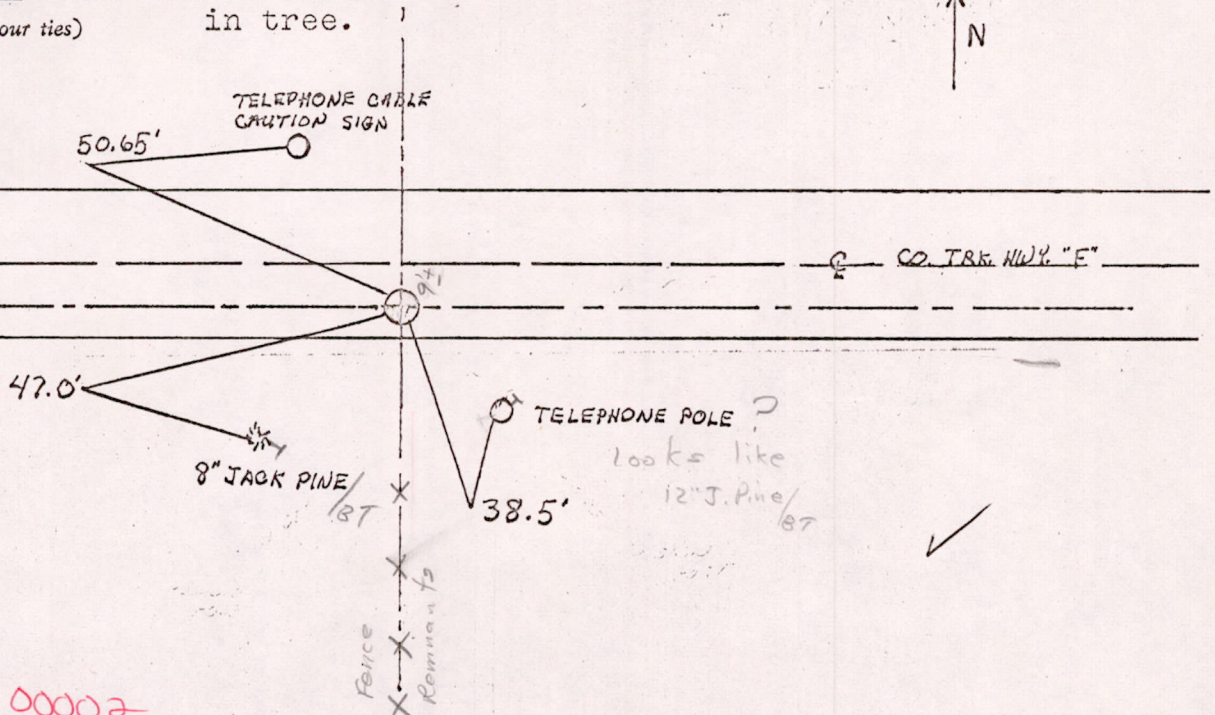
CERTIFIED CORRECT:

R. K. Saylor  
Registered Land Surveyor

DATE: 2/5/75

TIE SKETCH Ties are to nails

(Show at least four ties) in tree.



M15191706 00002