

ADAMS COUNTY

Survey Monument Record

TYPE OF MONUMENT: Harrison std.

STATE PLANE COORDINATES: N \_\_\_\_\_

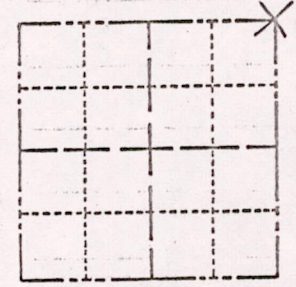
E \_\_\_\_\_

ELEVATION — M.S.L. DATUM: \_\_\_\_\_

THETA ANGLE: \_\_\_\_\_

FIELD BOOK: 108 PAGE 22

CORNER NO. 274  
SECTION 29  
TOWN 17  
RANGE 6



LOCATION  
(Indicated by 'X')

BASIS FOR MONUMENT LOCATION

(Use reverse side if necessary)

Show info such as: History of corner, with reference to Vol. and pg, dates, surveyor; exact description of monument replaced; if location computed, by taped or EDM traverse; landowner remarks, etc.

Point established by retracement of Cherny survey of plat in the NE 1/4 of the section.

SEAL:



*Top section of Harrison broken off needs work*  
*9.27.75 SS*

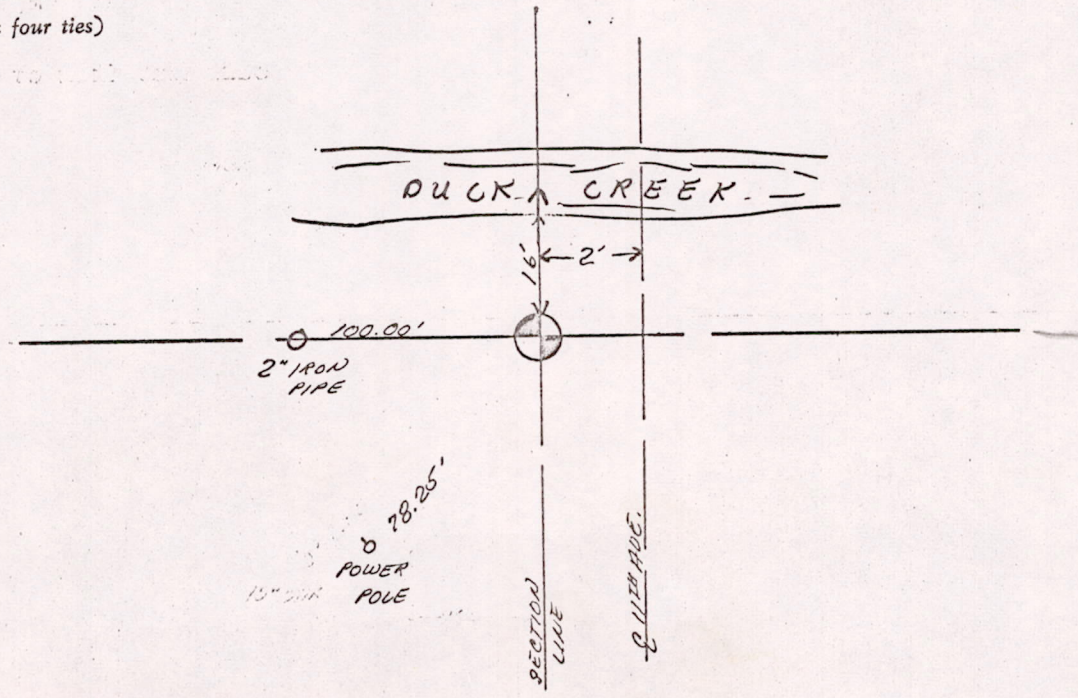
CERTIFIED CORRECT:

*Anthony B. Kiedrowski*  
Registered Land Surveyor

DATE: 5/9/73

TIE SKETCH

(Show at least four ties)



MIS 2917060003