

ADAMS COUNTY

Survey Monument Record

TYPE OF MONUMENT: Harrison Monument (30 inches)

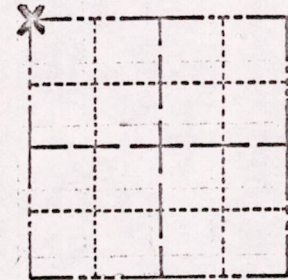
STATE PLANE COORDINATES: N _____
E _____

ELEVATION — M.S.L. DATUM: _____

THETA ANGLE: _____

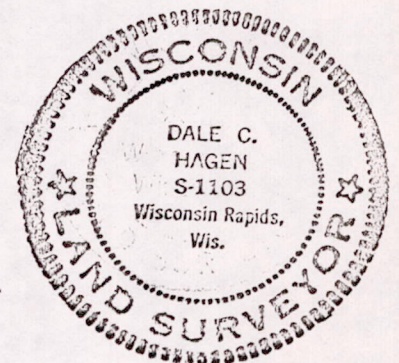
FIELD BOOK: _____ PAGE _____

CORNER NO. 669
SECTION 35
TOWN 17
RANGE 6



LOCATION
(Indicated by 'X')

SEAL:



BASIS FOR MONUMENT LOCATION

(Use reverse side if necessary)

Show info such as: History of corner, with reference to Vol. and pg. dates, surveyor; exact description of monument replaced; if location computed, by taped or EDM traverse; landowner remarks, etc.

Set corner proportionately and on line between adjacent section and quarter corners.

Ran EDM/transit traverse around the entire area to determine search areas for the corners. An extensive search revealed no conclusive evidence as to the location of the original corner or any subsequent remonumentation at this corner.

Everything O.K. 10-2-75 SS

CERTIFIED CORRECT:

Dale C Hagen

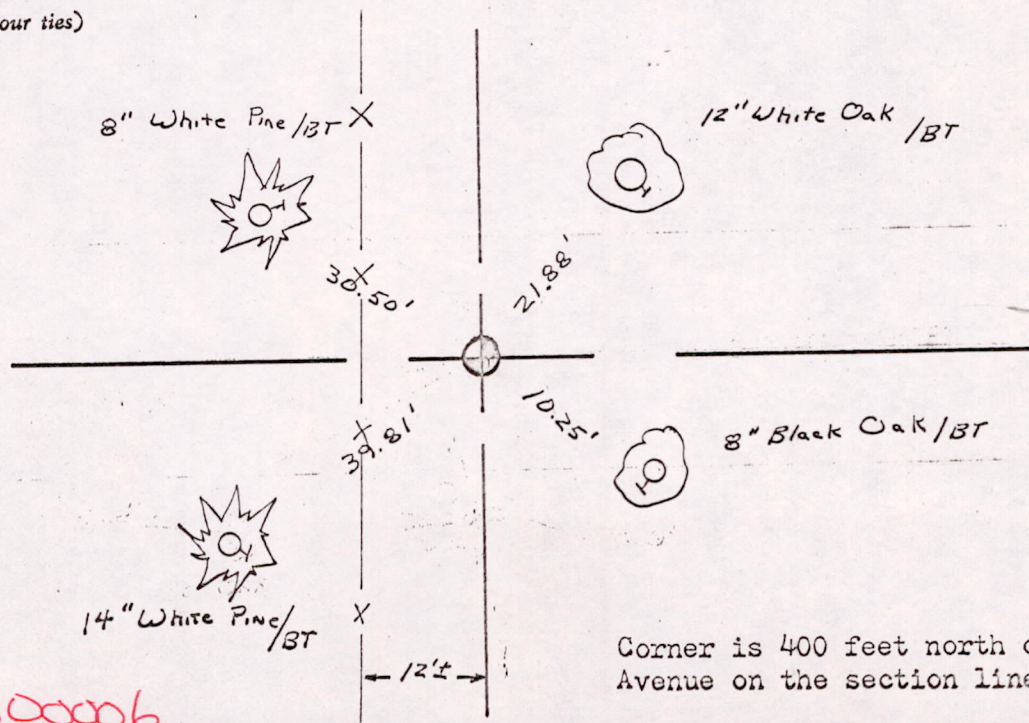
Registered Land Surveyor

DATE: 6/3/75

TIE SKETCH

NOTE: Ties to nail and disc in trees

(Show at least four ties)



Corner is 400 feet north of Dyke Avenue on the section line.

MIS 351706 00006