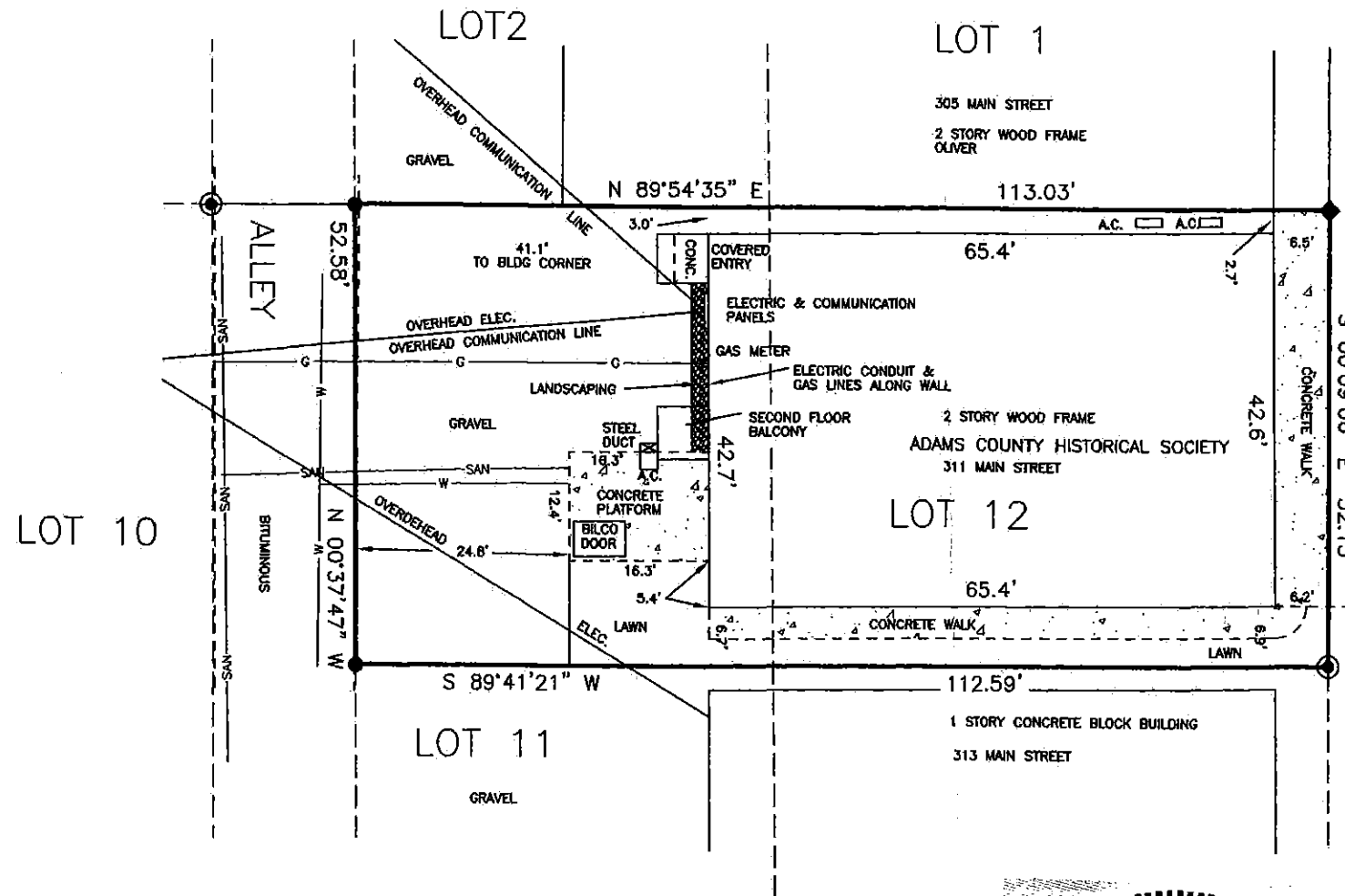
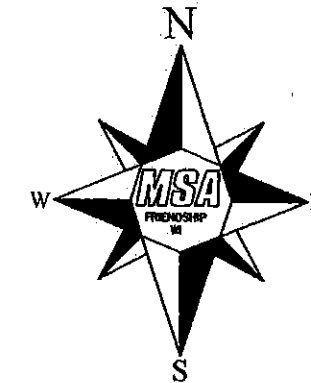
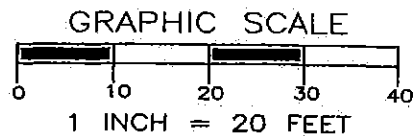


PART OF LOTS 11 AND 12, BLOCK 5; ORIGINAL PLAT OF VILLAGE OF FRIENDSHIP,
 LOCATED IN THE NW 1/4 OF THE SW 1/4, SECTION 5, TOWN 17 NORTH, RANGE 6 EAST
 VILLAGE OF FRIENDSHIP, WISCONSIN



LEGEND

- - 3/4" IRON ROD, FOUND
- ◆ - CHISELD MARK AND TIES IN CONC. WALK
- - 3/4" X 18" IRON ROD, 1.5 #/FT., PLACED
- G- = UNDERGROUND GAS SERVICE
- SAN- = SANITARY SEWER
- W- = UNDERGROUND WATER SERVICE



THE UNDERGROUND UTILITIES SHOWN HEREON
 ARE BASED UPON DIGGER'S HOTLINE TICKET 20162518901

THE EAST LINE OF LOT 12, BLOCK 5,
 WAS ASSIGNED A BEARING OF S00°09'06"E AS THE
 BASIS OF BEARINGS ON THIS MAP.



Gregory P. Rhinehart 7/18/2016
 MSA PROFESSIONAL SERVICES DATE
 GREGORY P. RHINEHART, PROFESSIONAL LAND SURVEYOR, S-1478

NOTE: IF THE SURVEYOR'S SEAL AT LEFT IS NOT RED IN COLOR, THE SURVEY
 IS A COPY AND SHOULD BE ASSUMED TO CONTAIN UNAUTHORIZED ALTERATIONS.
 THE CERTIFICATION CONTAINED ON THIS DOCUMENT SHALL NOT APPLY TO COPIES.

POS05170631021



TRANSPORTATION • MUNICIPAL
 DEVELOPMENT • ENVIRONMENTAL
 P.O. Box 349 Friendship, WI 53934-0349
 608-339-3808
 © MSA Professional Services, Inc.

Cadd File: R17903000.DWG			
Field Book: FILE	Drawn by: GPR	Date: JULY 14, 2016	
Page No.: FILE	Checked by: EJS	Scale: 1" = 20'	

PLANIMETRIC SURVEY

PREPARED FOR: ADAMS CO. HISTORICAL SOCIETY, INC
 PO BOX 264
 FRIENDSHIP, WI 53934

Project No. R17903000
 Sheet 1 of 1