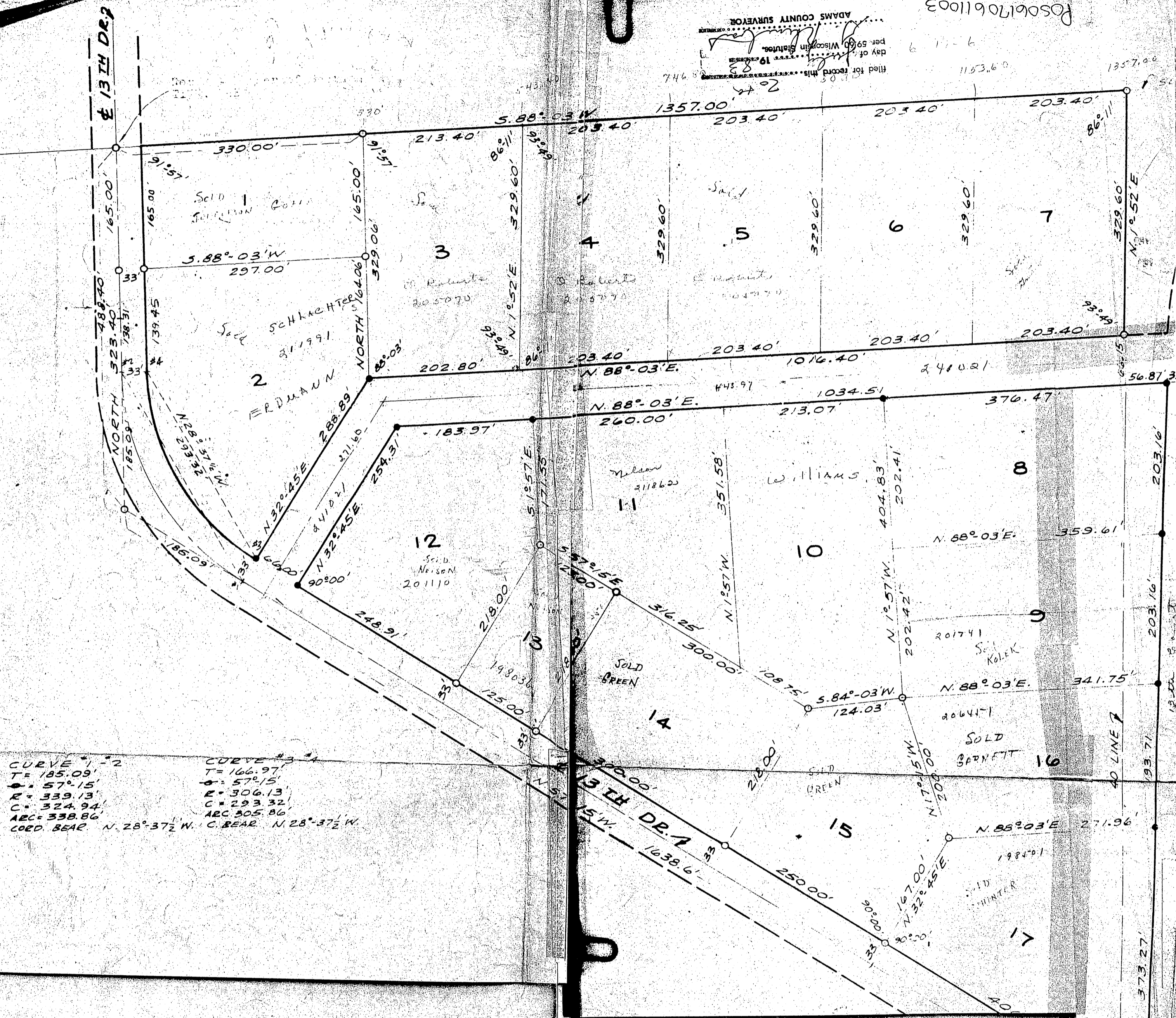


ADAMS COUNTY SURVEYOR
 day of 1965
 per 59 (6) Wisconsin Statutes
 filed for record this 19th day of July 1965
 1153.60

Pos06170611003



CURVE #1-2
 T= 185.09'
 Δ= 57° 15'
 R= 339.13'
 C= 324.94'
 ARC= 338.86'
 COORD. BEAR. N. 28° 37 1/2' W.

CURVE #3-4
 T= 166.97'
 Δ= 57° 15'
 R= 306.13'
 C= 293.32'
 ARC= 305.86'
 COORD. BEAR. N. 28° 37 1/2' W.

SCALE: 1" = 100'
 O EXISTING IRON STAKES

Revised July 31 - 1967

PRELIMINARY PLAT — A PART
 OF THE N 1/2 OF THE NE 1/4, SECTION 6,
 T-17-N, R-6-E, ADAMS CO., WISC.

HARLEY A. SIME
 REG. LAND SURVEYOR
 TOMAH, WISCONSIN

HOWARD HOLZMAN CARTOGRAPHER JULY 30, 1965
 REV. 1-21-66