

S-000181

SCALE: 1 in. = 60 ft.  
SURVEYOR:  
R. K. Sawyer S-417

PIERCE ST.

66.30'

270.00'  
S. 89° 20' 45" E.

66.30'

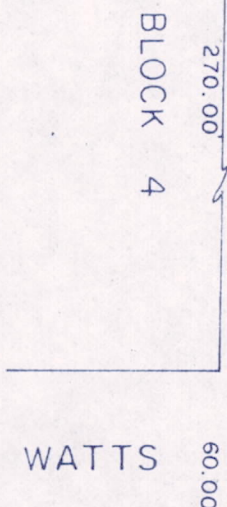
60.00' ST.

270.00'

66.30'

GROVE STREET

60.00' ST.



WATTS

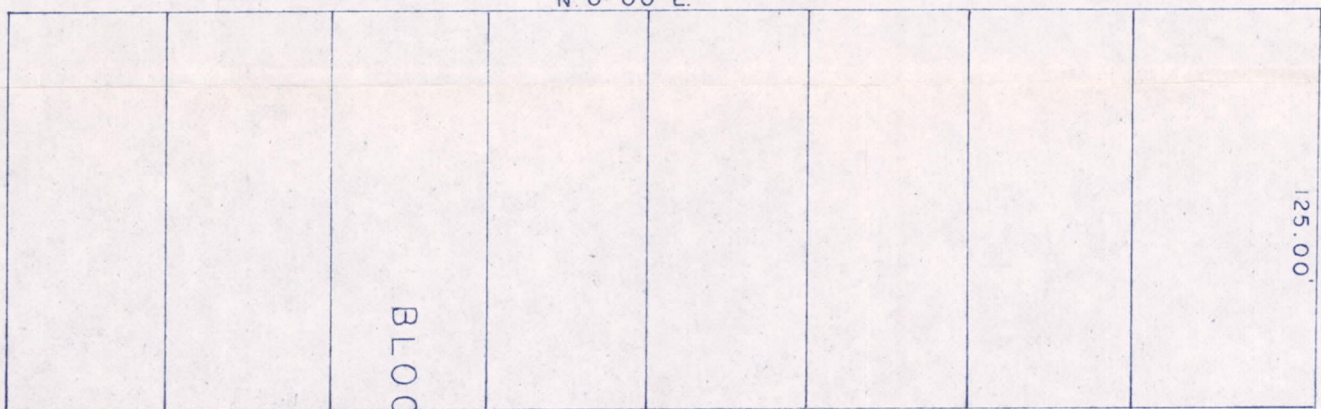
BLOCK 3

270.00'

60.00'

WERNER

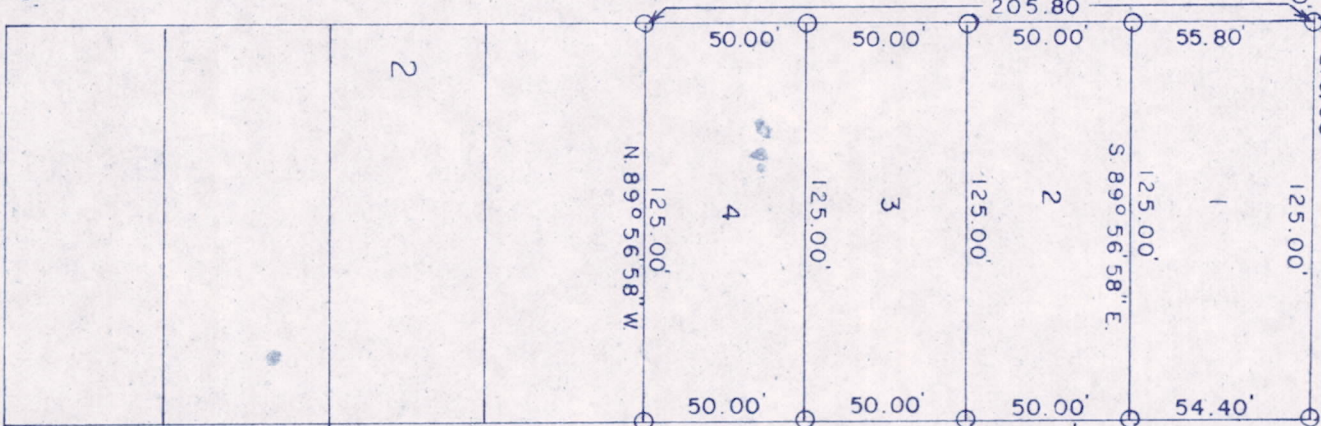
N. 0° 00' E.



BLOCK 2

N. 0° 00' E.

205.80'



STREET

N. LINE OF S.E. 1/4 OF S.W. 1/4 OF SEC. 8

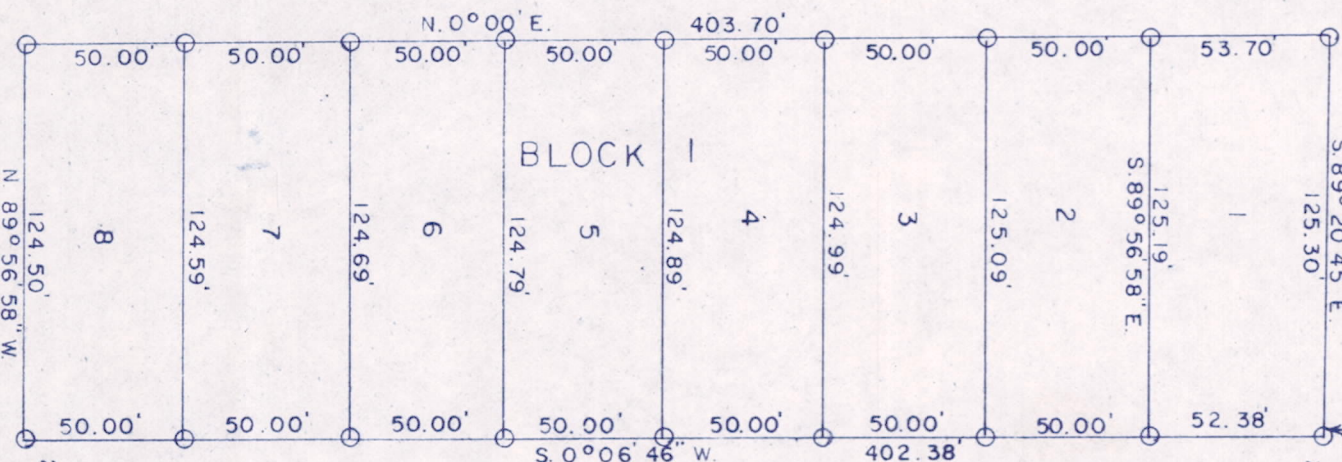
60.00'

HOLTZ

STREET

N. 0° 00' E.

403.70'



BLOCK 1

43.00'

52.38'

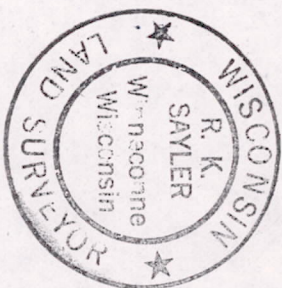
1/4 SEC. LINE

STON

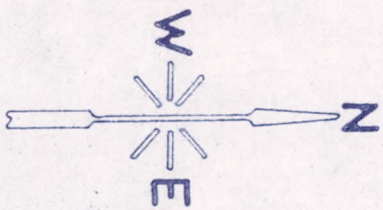
A. E. PAVELLEC & ASSOCIATES

LOTS 1, 2, 3 AND 4 IN BLOCK NO. 2 AND LOTS 1, 2, 3, 4, 5, 6, 7, AND 8 IN BLOCK NO. 1 OF WATTS SUBDIVISION TO THE CITY OF ADAMS, ADAMS COUNTY, WISCONSIN.

SESW



- Denotes existing iron pipe
- Denotes iron pipe set



66.00'

JUNE

STREET