

LOTS 1 THROUGH 12 AND LOTS 19 THROUGH 24 AND PORTIONS OF THE VACATED ALLEY OF BLOCK 5; LOTS 1 THROUGH 12 AND LOTS 16 THROUGH 24 AND PORTIONS OF THE VACATED ALLEY OF BLOCK 6; LOTS 1 THROUGH 24 AND THE VACATED ALLEY OF BLOCK 7, LOTS 1 THROUGH 12 OF BLOCK 8; LOTS 1 THROUGH 12 OF BLOCK 9; LOTS 1 THROUGH 24 AND THE VACATED ALLEY OF BLOCK 10; LOTS 1 THROUGH 24 AND PORTIONS OF THE VACATED ALLEY OF BLOCK 11; PART OF VACATED NORTH WATTS STREET; PART OF VACATED NORTH WERNER STREET; PART OF VACATED NORTH HOLZ STREET; PART OF VACATED EAST LIBERTY STREET; ALL LOCATED IN THE SOUTHEAST QUARTER OF THE NORTHWEST QUARTER, SECTION 8, TOWNSHIP 17 NORTH, RANGE 6 EAST, CITY OF ADAMS, ADAMS COUNTY WISCONSIN.

**DESCRIPTION:**

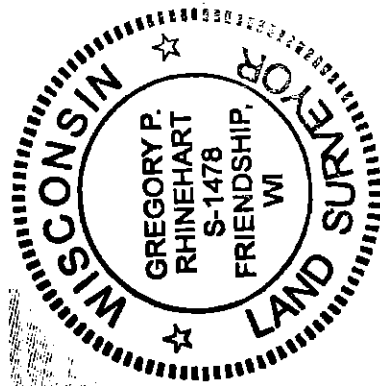
LOTS 1 through 12 AND LOTS 19 through 24 AND PORTIONS OF THE VACATED ALLEY OF BLOCK 5; LOTS 1 through 12 AND LOTS 16 through 24 AND PORTIONS OF THE VACATED ALLEY OF BLOCK 6; LOTS 1 through 24 AND THE VACATED ALLEY OF BLOCK 7; LOTS 1 through 12 OF BLOCK 8, LOTS 1 through 12 OF BLOCK 9, LOTS 1 through 24 AND THE VACATED ALLEY OF BLOCK 10; LOTS 13 through 24 AND PORTIONS OF THE VACATED ALLEY OF BLOCK 11; PART OF VACATED NORTH WATTS STREET; PART OF VACATED NORTH WERNER STREET; PART OF VACATED NORTH HOLZ STREET; PART OF VACATED EAST LIBERTY STREET; ALL LOCATED IN THE SOUTHEAST QUARTER OF THE NORTHWEST QUARTER, SECTION 8, TOWNSHIP 17 NORTH, RANGE 6 EAST, CITY OF ADAMS, ADAMS COUNTY WISCONSIN, bounded and described as follows:

Commencing at the North Quarter Corner of said Section 8; thence S00°55'32"E along the east line of the Northeast Quarter of the Northwest Quarter of said Section 8 a distance of 1319.15 feet to the Northeast Corner of the Southeast Quarter of the Northwest Quarter of said Section 8; thence S00°58'33"E along the east line of the Southeast Quarter of the Northwest Quarter of said Section 8 a distance of 42.13 feet to Northeast Corner of Block 8 of Oakcrest Subdivision and being the Point of Beginning. Thence continuing S00°58'33"E along the east line of Oakcrest Subdivision and also being the east line of the Southeast Quarter of the Northwest Quarter of said Section 8 a distance of 1244.97 feet to the Southeast Corner of Block 9 of Oakcrest Subdivision; thence S89°39'19"W along the south lines of Block 9, 10 and 11 of Oakcrest Subdivision a distance of 674.36 feet; thence N00°54'43"W a distance of 199.49 feet; thence N01°03'40"W a distance of 105.29 feet; thence N01°02'08"W a distance of 492.46 feet; thence S89°37'25"W a distance of 134.99 feet; thence S89°39'46"W a distance of 59.96 feet; thence S89°39'54"W a distance of 134.94 feet; thence S89°31'22"W a distance of 135.21 feet; thence N01°13'50"W a distance of 449.37 feet to the Northwest Corner of Block 5, 6, 7, and 8 of Oakcrest Subdivision 1141.94 feet to the Point of Beginning.

Containing 1,049,149 Square Feet (24.09 Acres)

I have made such survey and map at the direction of JANET WINTERS, CLERK, CITY OF ADAMS;

That I have fully complied with the provisions of Section AE 7 fo the Wisconsin Administrative Code in surveying, dividing, and mapping the same, to the best of my knowledge and belief.



*Gregory P. Rhinehart*  
 MSA PROFESSIONAL SERVICES  
 GREGORY P. RHINEHART, PROFESSIONAL LAND SURVEYOR, S-1478  
 DATE 6/8/2017

NOTE: IF THE SURVEYOR'S SEAL AT LEFT IS NOT RED IN COLOR, THE SURVEY IS A COPY AND SHOULD BE ASSUMED TO CONTAIN UNAUTHORIZED ALTERATIONS. THE CERTIFICATION CONTAINED ON THIS DOCUMENT SHALL NOT APPLY TO COPIES.



TRANSPORTATION • MUNICIPAL DEVELOPMENT • ENVIRONMENTAL  
 P.O.Box 349 Friendship, WI 53934-0349  
 608-339-3808  
 © MSA Professional Services, Inc.

Cadd File: P:\30s\30\00030044\R00030044CITY\00030044CITY-SCHOOL.dwg  
 Field Book: FILE  
 Page No.: FILE  
 Drawn by: GPR  
 Checked by: EJS  
 Date: 17 MAY, 2017  
 Scale: 1" = 200'

**PLAT OF SURVEY**

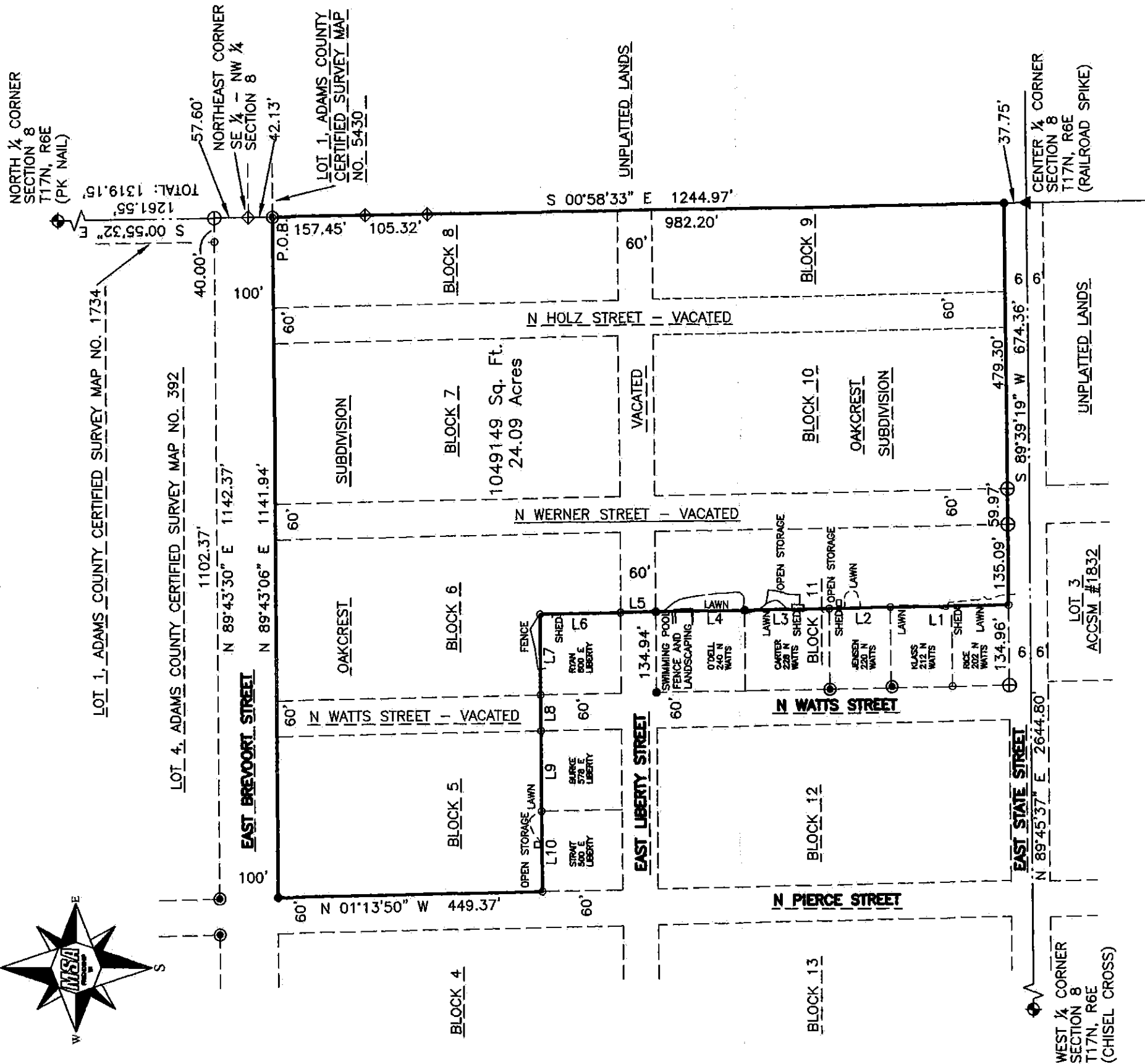
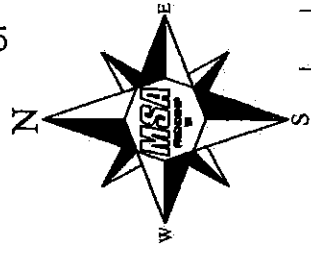
:PREPARED FOR: CITY OF ADAMS  
 P.O. BOX 1009  
 ADAMS, WI 53910

Project No. 00034044

Sheet 1 of 1

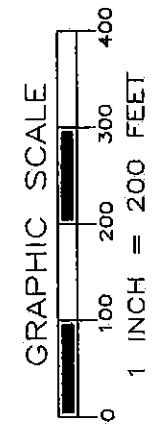
Pos08170231007

LOTS 1 THROUGH 12 AND LOTS 19 THROUGH 24 AND PORTIONS OF THE VACATED ALLEY OF BLOCK 5;  
 LOTS 1 THROUGH 12 AND LOTS 16 THROUGH 24 AND PORTIONS OF THE VACATED ALLEY OF BLOCK 6;  
 LOTS 1 THROUGH 24 AND THE VACATED ALLEY OF BLOCK 7, LOTS 1 THROUGH 12 OF BLOCK 8;  
 LOTS 1 THROUGH 12 OF BLOCK 9; LOTS 1 THROUGH 24 AND THE VACATED ALLEY OF BLOCK 10;  
 LOTS 13 THROUGH 24 AND PORTIONS OF THE VACATED ALLEY OF BLOCK 11; PART OF VACATED NORTH  
 WATTS STREET; PART OF VACATED NORTH WERNER STREET; PART OF VACATED NORTH HOLZ STREET;  
 PART OF VACATED EAST LIBERTY STREET; ALL LOCATED IN THE SOUTHEAST QUARTER  
 OF THE NORTHWEST QUARTER, SECTION 8, TOWNSHIP 17 NORTH, RANGE 6 EAST,  
 CITY OF ADAMS, ADAMS COUNTY WISCONSIN.



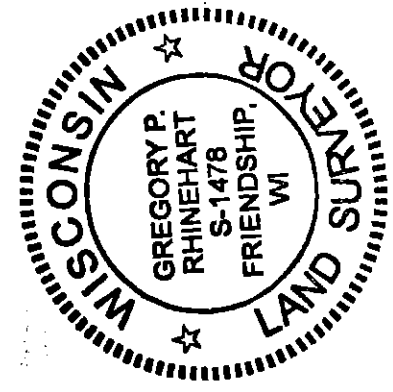
LINE	BEARING	DISTANCE
L1	N 00°54'43" W	199.49'
L2	N 01°03'40" W	105.29'
L3	N 01°02'08" W	145.11'
L4	N 01°02'08" W	150.11'
L5	N 01°02'08" W	60.00'
L6	N 01°02'08" W	137.24'
L7	S 89°37'25" W	134.99'
L8	S 89°39'46" W	59.96'
L9	S 89°39'54" W	134.94'
L10	S 89°31'22" W	135.21'

THE SOUTH LINE OF THE NW 1/4 OF SECTION 8-17-6  
 WAS ASSIGNED A BEARING OF N89°45'37"E AS THE  
 BASIS OF BEARINGS ON THIS MAP.



**LEGEND**

- ◊ - GOVERNMENT CORNER, AS NOTED
- ⊕ - STONE MONUMENT, FOUND
- ⊗ - 2" IRON PIPE, FOUND
- - 1" IRON PIPE, FOUND
- - 3/4" IRON ROD, FOUND
- - 3/4" X 18" IRON ROD, 1.5 #/FT., PLACED



*Gregory P. Rhinehart*  
 MSA PROFESSIONAL SERVICES  
 GREGORY P. RHINEHART, PROFESSIONAL LAND SURVEYOR, S-1478  
 DATE: 6/8/2017

NOTE: IF THE SURVEYOR'S SEAL AT LEFT IS NOT RED IN COLOR, THE SURVEY IS A COPY AND SHOULD BE ASSUMED TO CONTAIN UNAUTHORIZED ALTERATIONS. THE CERTIFICATION CONTAINED ON THIS DOCUMENT SHALL NOT APPLY TO COPIES.

Pos08170631007



TRANSPORTATION • MUNICIPAL DEVELOPMENT • ENVIRONMENTAL  
 P.O. Box 349 Friendship, WI 53934-0349  
 808-339-3808  
 © MSA Professional Services, Inc.

Cadd File: P:\30s\30\00030044\R00030044CITY\00030044CITY-SCHOOL.dwg  
 Field Book: FILE Drawn by: GPR Date: 17 MAY, 2017  
 Page No.: FILE Checked by: EJS Scale: 1" = 200'

**PLAT OF SURVEY**

PREPARED FOR: CITY OF ADAMS  
 P.O. BOX 1009  
 ADAMS, WI 53910

Project No. 00034044  
 Sheet 1 of 1