

Pos 1717061005

Summ

Received for record the
 of
 No. 91761

No. 91761

From	To	Bearing	Dist.
2" pipe N.W. cor.	Pine 10" dia.	S. 85° 31' E.	28.15'
of sub.	Pine 10" dia.	N. 5° 21' E.	62.5'
N.W. cor. Bk. 1	Oak 3" dia.	S. 63° 57' E.	20.7'
Sw. cor. Bk. 1	Oak 3" dia.	N. 50° 30' E.	6.4'
N.W. cor. Bk. 2	Pine 7" dia.	N. 64° 00' E.	10.85'
S.W. cor. Bk. 2	Pine 7" dia.	N. 13° 55' E.	25.93'
" " " "	Pine 13" dia.	S. 70° 07' E.	12.48'
S.E. cor. Bk. 3	Oak 3" dia.	N. 84° 47' W.	21.1'
" " " "	Oak 4" dia.	S. 19° 30' W.	19.9'
" " " "	Oak 2" dia.	N. 23° 37' W.	22.8'
N.E. cor. Bk. 3	Oak 3" dia.	S. 32° 20' W.	20.05'
S.W. cor. Bk. 5	Oak 6" dia.	N. 3° 06' W.	39.1'
" " " "	Oak 19" dia.	N. 61° 26' E.	111.6'
S.E. cor. lot 11, Bk. 5	Pine 10" dia.	N. 50° 00' W.	13.3'
S.E. cor. lot 11-Bk. 7	Pine 9" dia.	S. 18° 45' E.	109.6'
" " " "	Oak 7" dia.	N. 56° 42' E.	47.5'
S.W. cor. Bk. 7	Oak 7" dia.	N. 28° 20' W.	17.8'
" " " "	Oak 7" dia.	N. 35° 12' E.	29.6'
20 ft. E. of N.E. cor. of lot 1 Bk. 7	Oak 16" dia.	S. 30° 52' W.	51.1'
S.E. cor. lot 11-Bk. 8	Pine 12" dia.	N. 21° 49' E.	74.9'
S.E. cor. Bk. 5	Oak 6" dia.	N. 5° 34' W.	33.35'
" " " "	Oak 6" dia.	N. 50° 05' E.	19.3'

Bearings from true meridian - Variation 4° 07' E.
 Witness Trees.

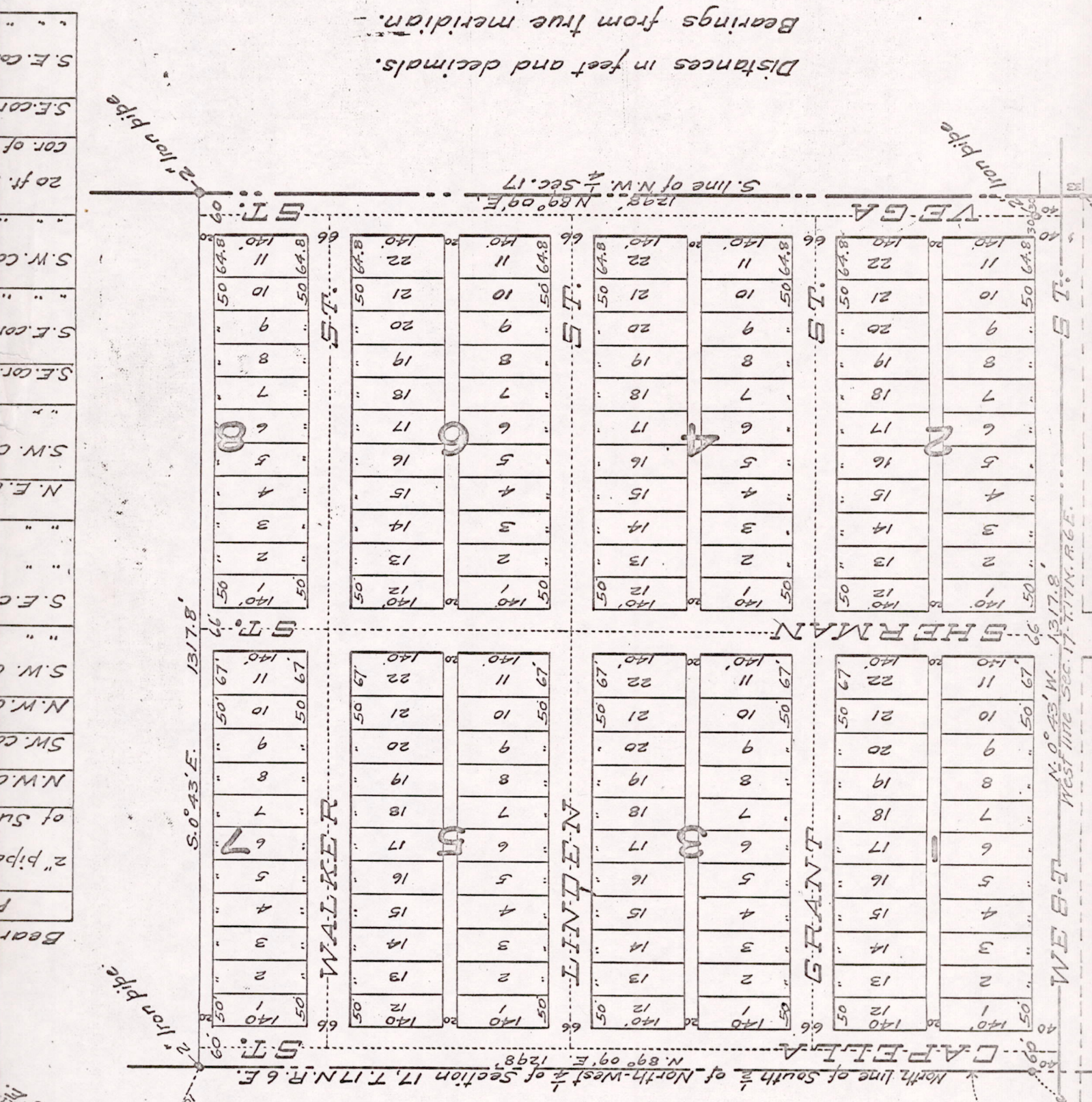
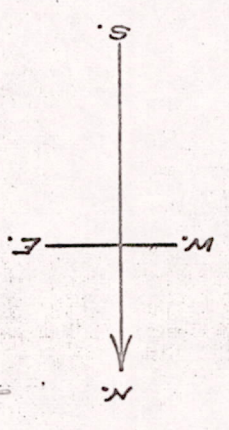


30' E.

ADAMS COUNTY WIS.

Scale 1" = 200'

South Railway Addition
E. E. Gray
Nov. 28, 1924



Distances in feet and decimals.
Bearings from true meridian.

Position 1762450

Bear
f
2" pipe
of Su
N.W.C
S.W.C
S.E.C
S.E.C
S.E.C
S.E.C
S.E.C
20 ft.
cor. of
S.E.C
S.E.C

WE B E M
N. 0° 43' W. 1317.8
West line Sec. 17, T. 17 N., R. 6 E.