

ADAMS COUNTY

Survey Monument Record

TYPE OF MONUMENT: 30" Harrison (Standard)

STATE PLANE COORDINATES: N \_\_\_\_\_

E \_\_\_\_\_

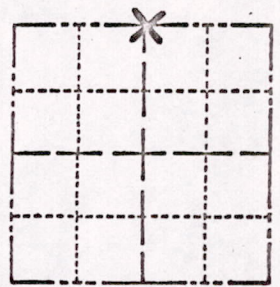
ELEVATION — M.S.L. DATUM: \_\_\_\_\_

THETA ANGLE: \_\_\_\_\_

FIELD BOOK: \_\_\_\_\_ PAGE \_\_\_\_\_

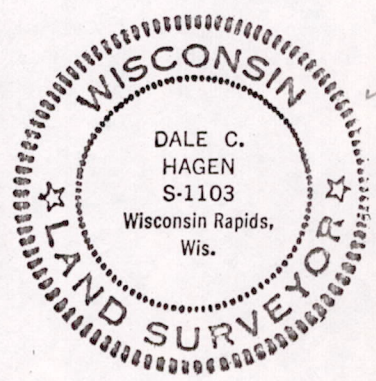
CORNER NO. 457  
SECTION 9  
TOWN 17  
RANGE 7

26



LOCATION (Indicated by 'X')

SEAL:



BASIS FOR MONUMENT LOCATION

(Use reverse side if necessary)

Show info such as: History of corner, with reference to Vol. and pg, dates, surveyor; exact description of monument replaced; if location computed, by taped or EDM traverse; landowner remarks, etc.

Excavation with back-hoe yielded no evidence of an original or replacement monument for the North Quarter corner of Section 9.

Ran EDM/transit traverse of Section 9 and set Quarter corner equidistant and on line between Northwest and Northeast Section corners.

OK - GR-SS  
3-14-74

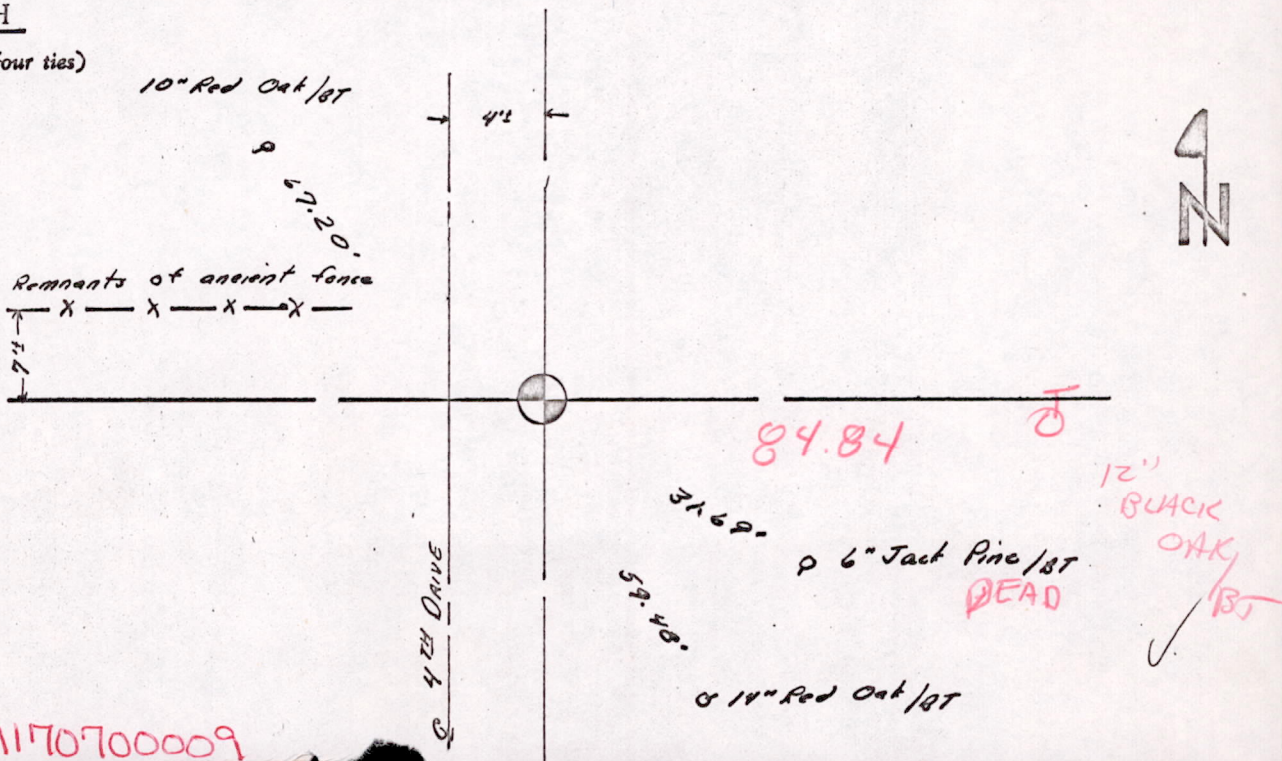
CERTIFIED CORRECT:

Dale C. Hagen  
Registered Land Surveyor

DATE: June 28, 1974

TIE SKETCH

(Show at least four ties)



M1509170700009