

ADAMS COUNTY

Survey Monument Record

TYPE OF MONUMENT: 30" HARRISON

STATE PLANE COORDINATES: N \_\_\_\_\_

E \_\_\_\_\_

ELEVATION — M.S.L. DATUM: \_\_\_\_\_

THETA ANGLE: \_\_\_\_\_

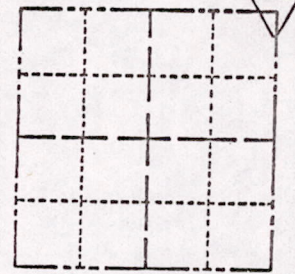
FIELD BOOK: 104 PAGE 72

CORNER NO. 40

SECTION 18

TOWN 17

RANGE 7



LOCATION (Indicated by 'X')

SEAL:

43

BASIS FOR MONUMENT LOCATION

(Use reverse side if necessary)

Show info such as: History of corner, with reference to Vol. and pg, dates, surveyor; exact description of monument replaced; if location computed, by taped or EDM traverse; landowner remarks, etc.

Found "PK" nail and set monument

August 23, 1971

Sam T. Mullen R.L.S. S-981

OK  
3-14-77  
GR-SS

CERTIFIED CORRECT:

Registered Land Surveyor

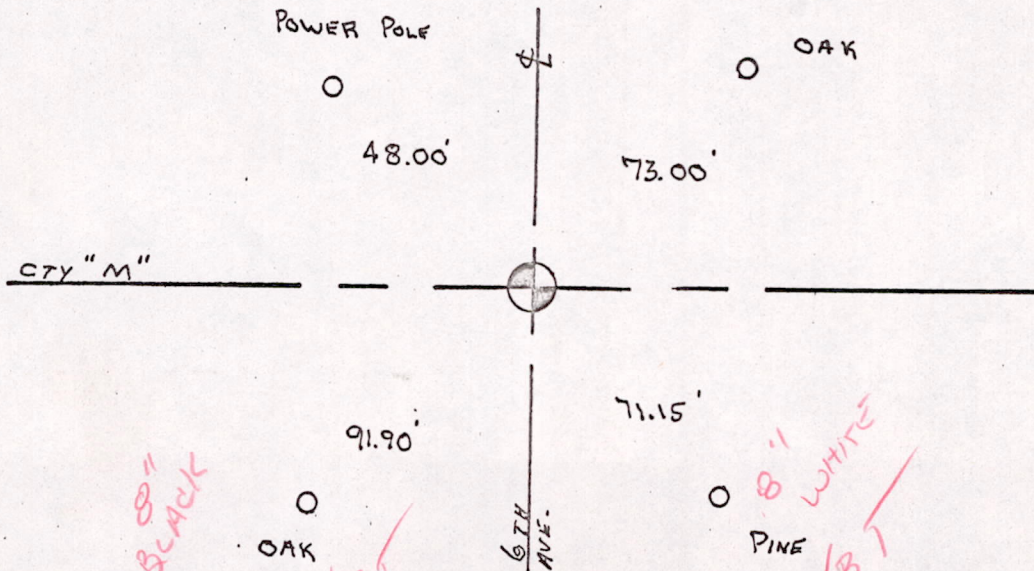
DATE:

71

TIE SKETCH

(Show at least four ties)

SET R.R. SPIKES



MIS 18170700001