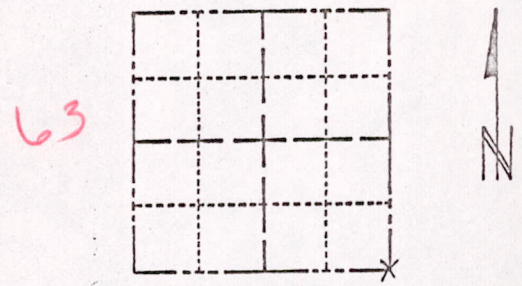


ADAMS COUNTY

Survey Monument Record

TYPE OF MONUMENT: HARRISON MONUMENT  
STATE PLANE COORDINATES: N \_\_\_\_\_  
E \_\_\_\_\_  
ELEVATION — M.S.L. DATUM: \_\_\_\_\_  
THETA ANGLE: \_\_\_\_\_  
FIELD BOOK: 102 PAGE 64

CORNER \_\_\_\_\_  
SECTION 18  
TOWN 17  
RANGE 7



LOCATION  
(Indicated by 'X')

SEAL:



BASIS FOR MONUMENT LOCATION

(Use reverse side if necessary)

Show info such as: History of corner, with reference to Vol. and pg, dates, surveyor; exact description of monument replaced; if location computed, by taped or EDM traverse; landowner remarks, etc.

Location of this corner was determined traversing and (see below) September 21, 1972

Anthony B. Kiedrowski R.L.S. 878

rerunning Sam Mullen's survey of Deer Run Acres.

*OK  
3-14-77  
62-55*

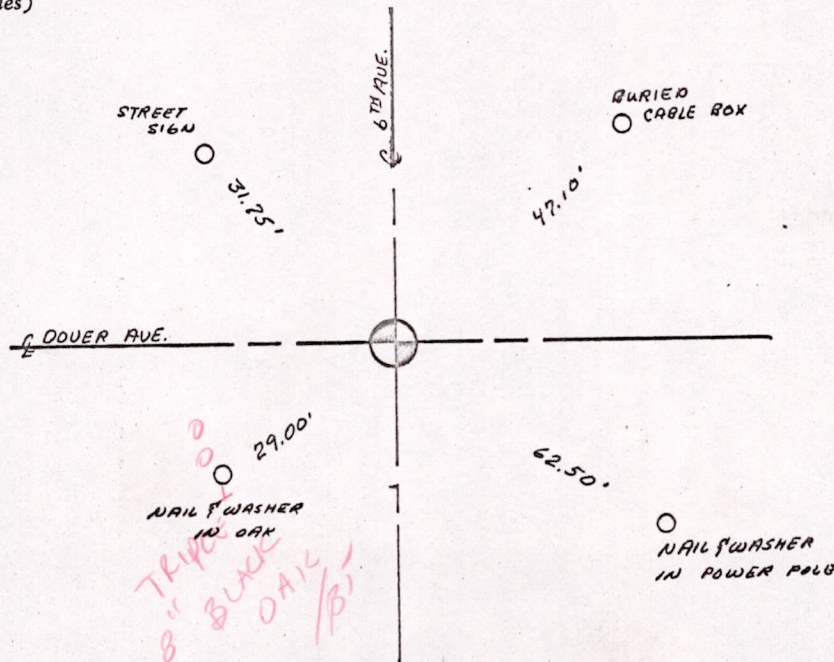
CERTIFIED CORRECT:

*Anthony B. Kiedrowski*  
Registered Land Surveyor

DATE: 1-30-73

TIE SKETCH

(Show at least four ties)



50001818700005