

# Survey Monument Record

TYPE OF MONUMENT: HARRISON MONUMENT

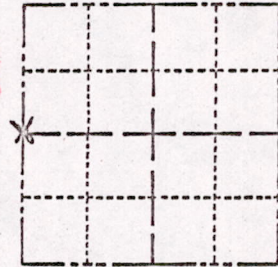
STATE PLANE COORDINATES: N \_\_\_\_\_

E \_\_\_\_\_

ELEVATION — M.S.L. DATUM: \_\_\_\_\_

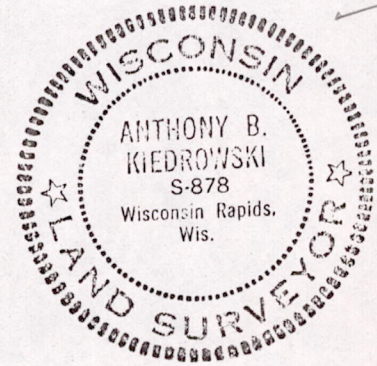
THETA ANGLE: \_\_\_\_\_

FIELD BOOK: 102 PAGE 62



LOCATION  
(Indicated by 'X')

SEAL:



## BASIS FOR MONUMENT LOCATION

(Use reverse side if necessary)

Show info such as: History of corner, with reference to Vol. and pg, dates, surveyor; exact description of monument replaced; if location computed, by taped or EDM traverse; landowner remarks, etc.

Location of this corner was done by traverseing.

September 21, 1972

Anthony B. Kiedrowski R.L.S. 878

62-55  
3-14-77

Set by extending the north line of Deer Run Acres (A survey by Sam Mullen) to its intersection with the west line of the section.

This point is not on a straight line between corners, but is equidistant therefrom.

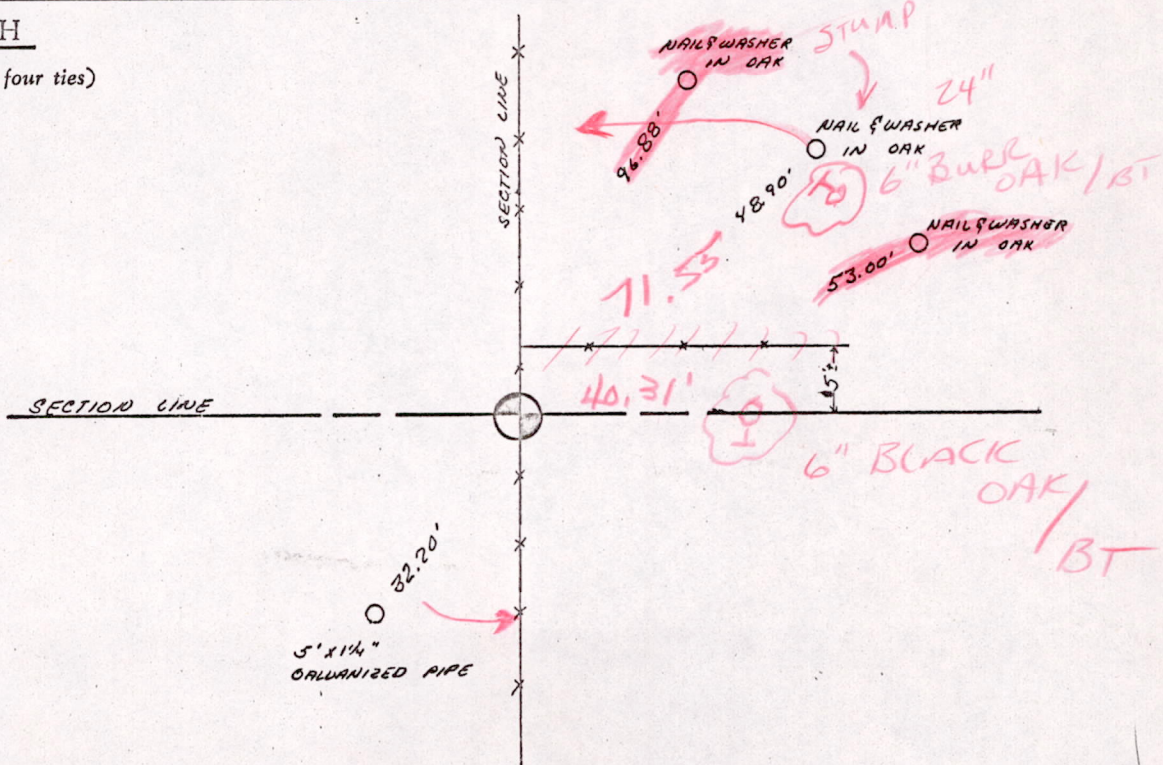
CERTIFIED CORRECT:

*Anthony B. Kiedrowski*  
Registered Land Surveyor

DATE: 1-30-73

## TIE SKETCH

(Show at least four ties)



M1518176700006