

ADAMS COUNTY

Survey Monument Record

TYPE OF MONUMENT: HARRISON MONUMENT

STATE PLANE COORDINATES: N _____

E _____

ELEVATION — M.S.L. DATUM: _____

THETA ANGLE: _____

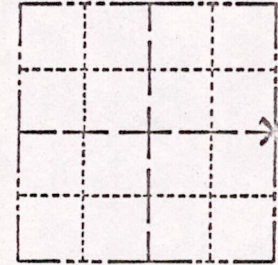
FIELD BOOK: 102 PAGE 66

CORNER NO. 1122

SECTION 18

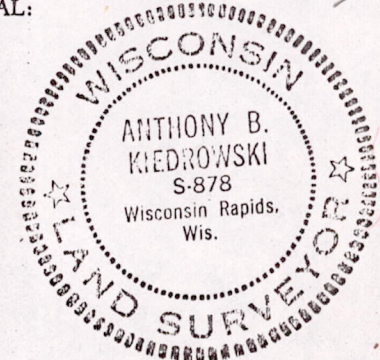
TOWN 17

RANGE 7



LOCATION
(Indicated by 'X')

SEAL:



BASIS FOR MONUMENT LOCATION

(Use reverse side if necessary)

Show info such as: History of corner, with reference to Vol. and pg, dates, surveyor; exact description of monument replaced; if location computed, by taped or EDM traverse; landowner remarks, etc.

Location of this corner was determined by traverseing, to the monument of same corner Survey of Deer Run Rcw's September 21, 1972

Anthony B. Kiedrowski R.L.S. 878

GR-555
3-14-77

OIC

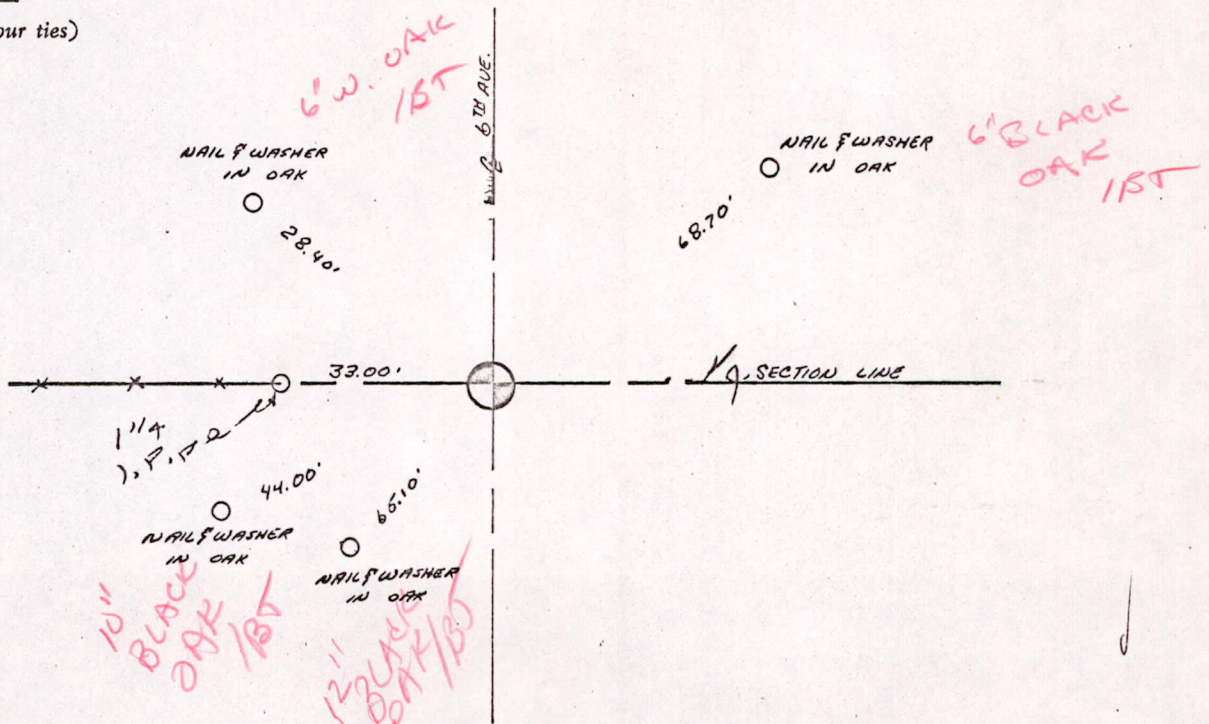
CERTIFIED CORRECT:

Anthony B. Kiedrowski
Registered Land Surveyor

DATE: 2-2-73

TIE SKETCH

(Show at least four ties)



1000070181518