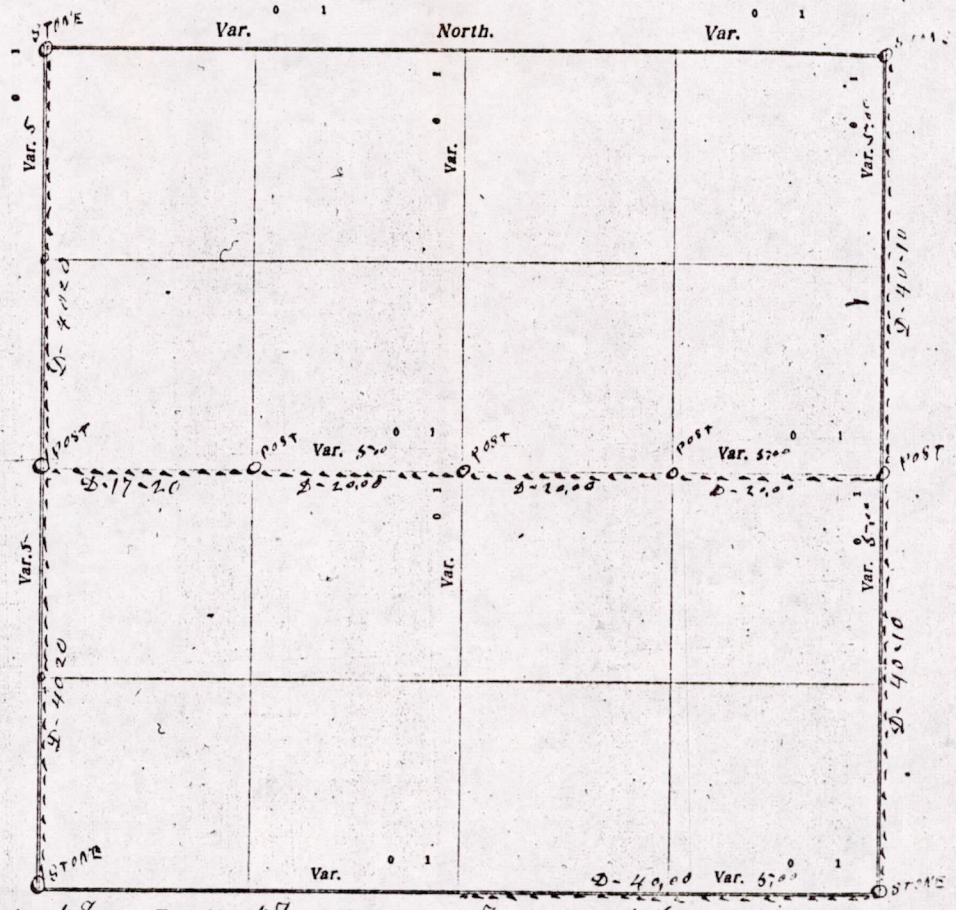


CERTIFICATE OF SURVEY.

STATE OF WISCONSIN, } ss. M. G. Smith Surveyor, in and for the County and State of Wisconsin,
 ADAMS COUNTY. }
 hereby certify that I have surveyed and subdivided Section 18 Township 17 North of Range 7 East of 4th Principal Meridian, as represented by the courses and distances on the following plat, and annexed field-notes of survey:
 Established the center of the section at the point of intersection of straight quarter lines.
 Established all quarter-quarter corners upon the section boundary at proportional distances between known section and quarter section corners, according to the original field-notes of the Government survey.
 Established all lost corners at proportionate distances between known corners, according to original field-notes of the Government survey.



Plat of Section 18, Township 17 North, Range 7 East of 4th Principal Meridian. Scale, 80 chains to 6 inches. The figures in red ink are the lengths of the lines as stated in the field-notes of the Government survey.

Declination of the Magnetic Meridian from the True Meridian _____ East.
 Surveyed and subdivided this 8th day of September A. D. 1917, in accordance with the State Laws and Instructions of the Commissioner of the General Land Office, and recorded on pages _____ of Register in the County Surveyor's office.
 WITNESS my hand this 8th day of September A. D. 1917.

M. G. Smith County Surveyor.

The above work was done at the request of Paul Reber and others.

MS18170700012

DESCRIPTION of Section, Quarter Section and Quarter-quarter Section Corners of Section

Township _____ North, Range _____ East of _____ Principal Meridian.

N. B.—The variation of needles adopted in establishing corners is _____

No.	Government Corners	Bearing Trees	In. dia.	Courses they bear	Links Distant	Bearing Trees	In. dia.	Courses they bear	Links Distant
1	N. W. Sec. cor. Identified								
2	N. E. Sec. cor. Identified								
3	S. E. Sec. cor. Identified	New	1 1/2 in. dia.	24 N-15-E	84				
4	S. W. Sec. cor. Identified								
5	N. 1/4 Sec. cor. Identified								
6	E. 1/4 Sec. cor. Identified								
7	S. 1/4 Sec. cor. Identified								
8	W. 1/4 Sec. cor. Identified								
Subdivision Corners.									
1	Center 1/4 Sec. cor.								
2	North 1/4-1/4s N. W. qr.								
3	East 1/4-1/4s N. W. qr.								
4	South 1/4-1/4s N. W. qr.								
5	West 1/4-1/4s N. W. qr.								
6	Center 1/4-1/4s N. W. qr.								
7	North 1/4-1/4s N. E. qr.								
8	East 1/4-1/4s N. E. qr.								
9	South 1/4-1/4s N. E. qr.								
10	Center 1/4-1/4s N. E. qr.								
11	East 1/4-1/4s S. E. qr.								
12	South 1/4-1/4s S. E. qr.								
13	West 1/4-1/4s S. E. qr.								
14	Center 1/4-1/4s S. E. qr.								
15	South 1/4-1/4s S. W. qr.								
16	West 1/4-1/4s S. W. qr.								
17	Center 1/4-1/4s S. W. qr.								

NAMES OF SWORN ASSISTANTS.

CHAINMEN	FLAGMEN	AXMEN
Robt McMahon Paul Petruskey		

MINUTES.

Commencing at the stone at the NW corner of section 18-2-17-R-7-E and ran South on the Range line at 5-2-V with Robt McMahon and Paul Petruskey as sworn chainmen 80 chains & 40 links to the stone at the SW corner of said section, and established 7 Post at 40-20 and set good Post, then East on the quarter line at 5-2-V 17 chains & 20 links and set Post, then 20 chains & set Post for center of section, then 40 chains east to the established 7 Post on the east side of the section, then went to the NE corner of the section, set stone & ran north at 5-2-V 20 chains & 20 links to stone at SE corner of the section, then established 7 Post on the East side of the section & made one new Bearing then ran west from the SE corner of the section at 5-2-V 40 chains but could find no Post or Bearing.

M. C. Smith County Surveyor

MIS 18170700012