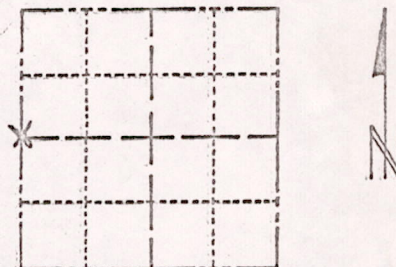


Job to do here check then

Survey Monument Record

TYPE OF MONUMENT: HARRISON MONUMENT
STATE PLANE COORDINATES: N _____
E _____
ELEVATION — M.S.L. DATUM: _____
THETA ANGLE: _____
FIELD BOOK: 102 PAGE 62

194
SECTION 18
TOWN 17
RANGE 7



BASIS FOR MONUMENT LOCATION

(Use reverse side if necessary)

Show info such as: History of corner, with reference to Vol. and pg. dates, surveyor; exact description of monument replaced; if location computed, by taped or EDM traverse; landowner remarks, etc.

SEAL:

LOCATION
(Indicated by 'X')



Location of this corner was done by traverseing.

September 21, 1972

Anthony B. Kiedrowski R.L.S. 878

Set by extending the north line of Deer Run Acres (A survey by Sam Mullen) to its intersection with the west line of the section.

This point is not on a straight line between corners, but is equidistant therefrom.

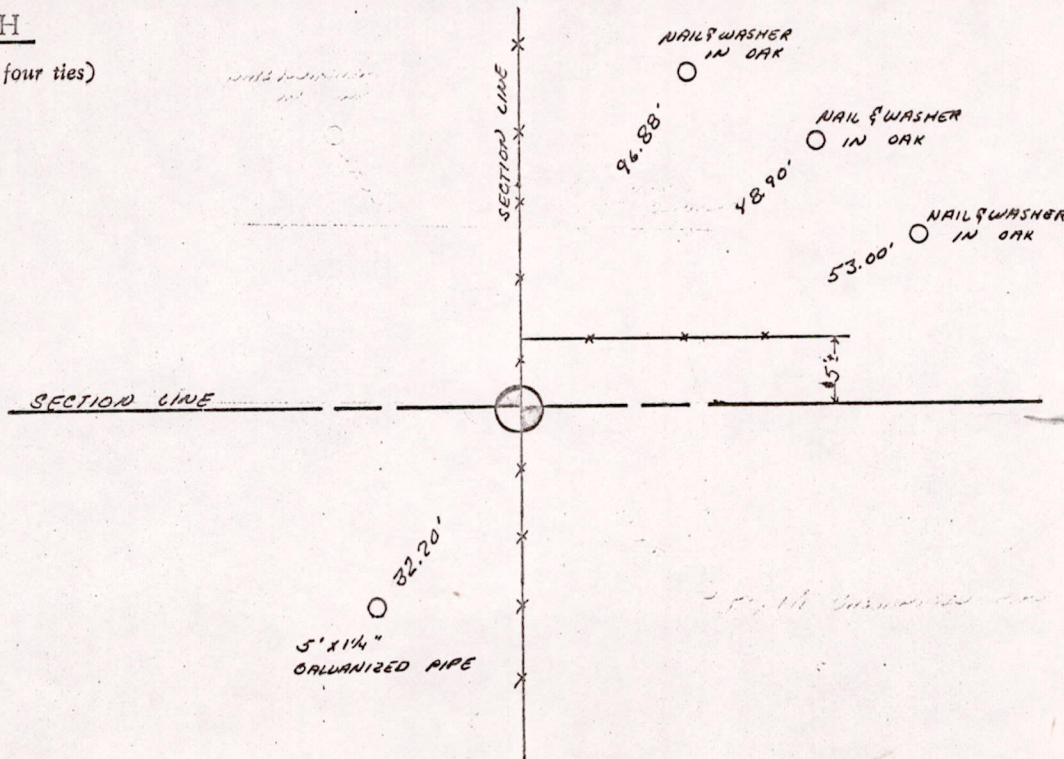
CERTIFIED CORRECT:

Anthony B. Kiedrowski
Registered Land Surveyor

DATE: 1-30-73

TIE SKETCH

(Show at least four ties)



M518170700014