

ADAMS COUNTY

Survey Monument Record

TYPE OF MONUMENT: Standard Harrison

STATE PLANE COORDINATES: N \_\_\_\_\_  
E \_\_\_\_\_

ELEVATION — M.S.L. DATUM: \_\_\_\_\_

THETA ANGLE: \_\_\_\_\_

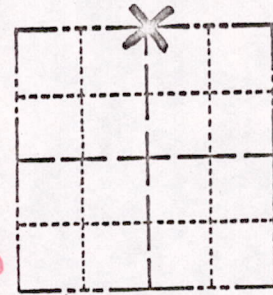
FIELD BOOK: \_\_\_\_\_ PAGE \_\_\_\_\_

CORNER NO. \_\_\_\_\_

SECTION 22

TOWN 17

RANGE 7



LOCATION  
(Indicated by 'X')

SEAL:

68

BASIS FOR MONUMENT LOCATION

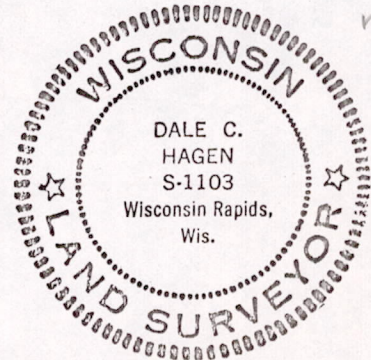
(Use reverse side if necessary)

Show info such as: History of corner, with reference to Vol. and pg, dates, surveyor; exact description of monument replaced; if location computed, by taped or EDM traverse; landowner remarks, etc.

Ran EDM/transit traverse around Sections 22,23 and 24, and tied into traverse around Section 27.

Excavation with backhoe yielded no evidence of the original corner or any subsequent remonumentation.

Set corner equidistant and on line between adjacent section corners.



CERTIFIED CORRECT:

Dale C. Hagen  
Registered Land Surveyor

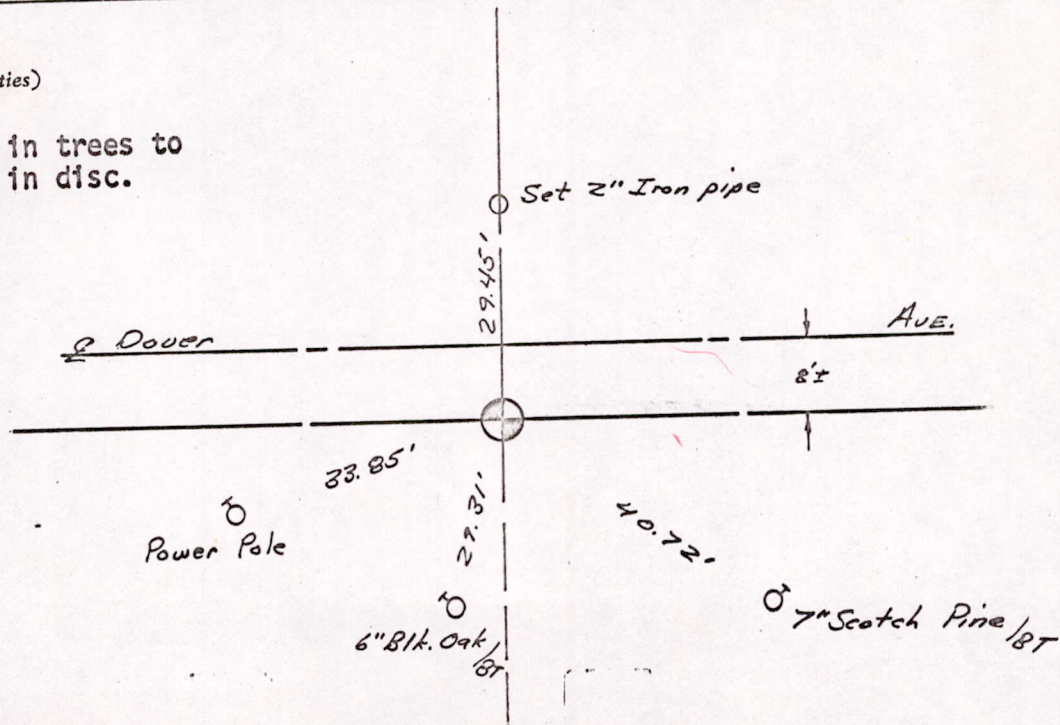
DATE: August 7, 1975

OK  
GR →  
3-26-77

TIE SKETCH

(Show at least four ties)

NOTE: Ties in trees to nail in disc.



11522170700003