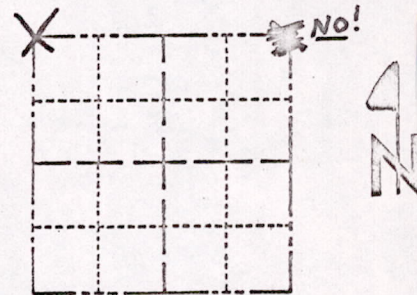


ADAMS COUNTY
Survey Monument Record

TYPE OF MONUMENT: HARRISON
 STATE PLANE COORDINATES: N _____
 E _____
 ELEVATION — M.S.L. DATUM: _____
 THETA ANGLE: _____
 FIELD BOOK: _____ PAGE _____

CORNER NO. 680
 SECTION 22
 TOWN 17
 RANGE 7



LOCATION
 (Indicated by 'X')

SEAL:

BASIS FOR MONUMENT LOCATION

(Use reverse side if necessary)

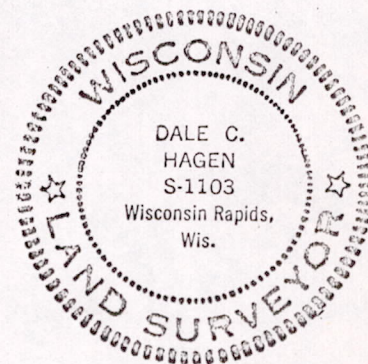
Show info such as: History of corner, with reference to Vol. and pg, dates, surveyor; exact description of monument replaced; if location computed, by taped or EDM traverse; landowner remarks, etc.

Anthony B. Kiedrowski, County Surveyor, excavated with backhoe opposite fence line.

Found 8" x 8" x 15" Stone with chisel cross in top.

Remonumented location with Standard Harrison Monument. Lowered stone and set Harrison on top.

*Now UNDER PATCH 3-15-77
 CR-55
 OK*



CERTIFIED CORRECT:

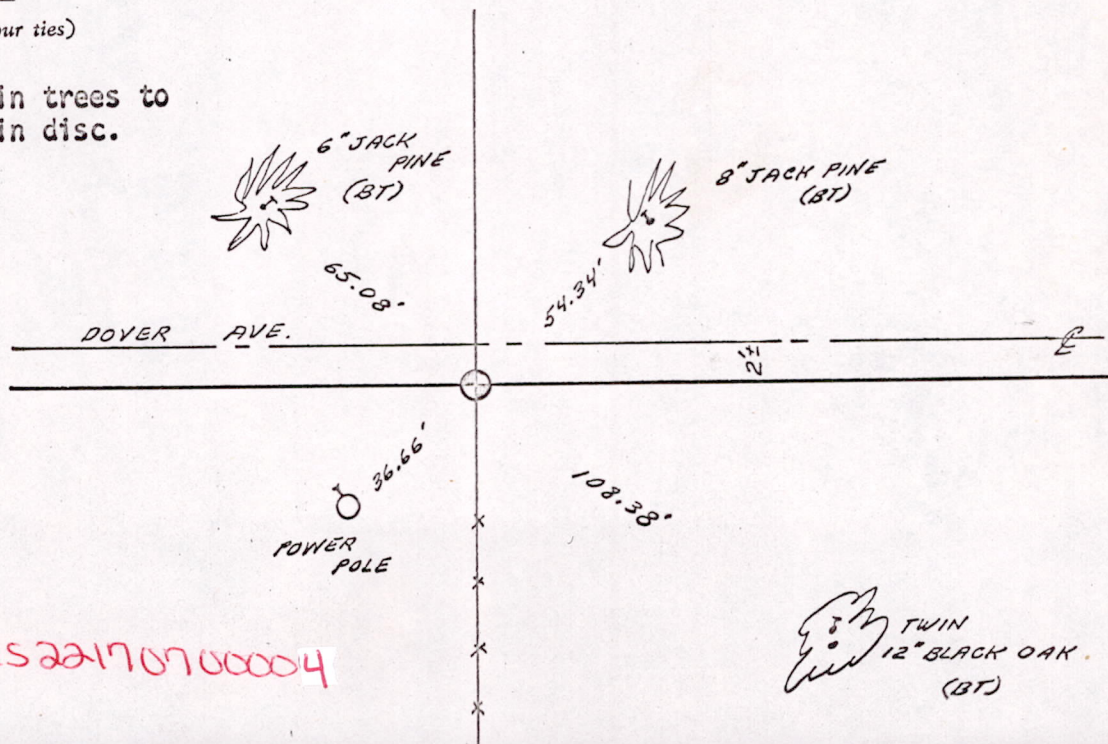
Dale C Hagen
 Registered Land Surveyor

DATE: July 17, 1975

TIE SKETCH

(Show at least four ties)

NOTE: Ties in trees to nail in disc.



mis 22170700004