

ADAMS COUNTY

Survey Monument Record

TYPE OF MONUMENT: Standard Harrison

STATE PLANE COORDINATES: N _____

E _____

ELEVATION — M.S.L. DATUM: _____

THETA ANGLE: _____

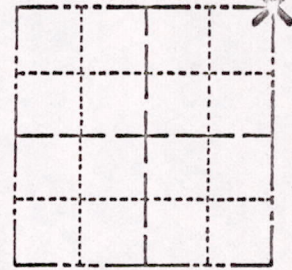
FIELD BOOK: _____ PAGE _____

CORNER NO. 722

SECTION 23

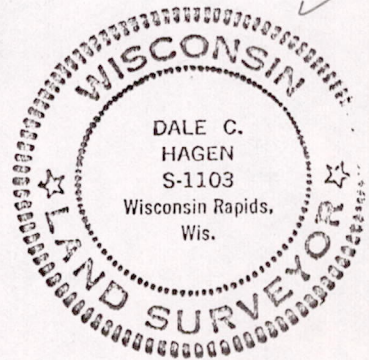
TOWN 17

RANGE 7



LOCATION
(Indicated by 'X')

SEAL:



BASIS FOR MONUMENT LOCATION

(Use reverse side if necessary)

Show info such as: History of corner, with reference to Vol. and pg. dates, surveyor; exact description of monument replaced; if location computed, by taped or EDM traverse; landowner remarks, etc.

Ran EDM/transit traverse around Sections 22, 23 and 24, and portions of adjacent sections.

Could find no evidence of the original corner or any remonumentation.

Set corner by proration between the Northeast corner of Section 24 and the Northwest corner of Section 23, and proportional to existing possession lines in the North/South direction.

GR-55
OK 3-28-77

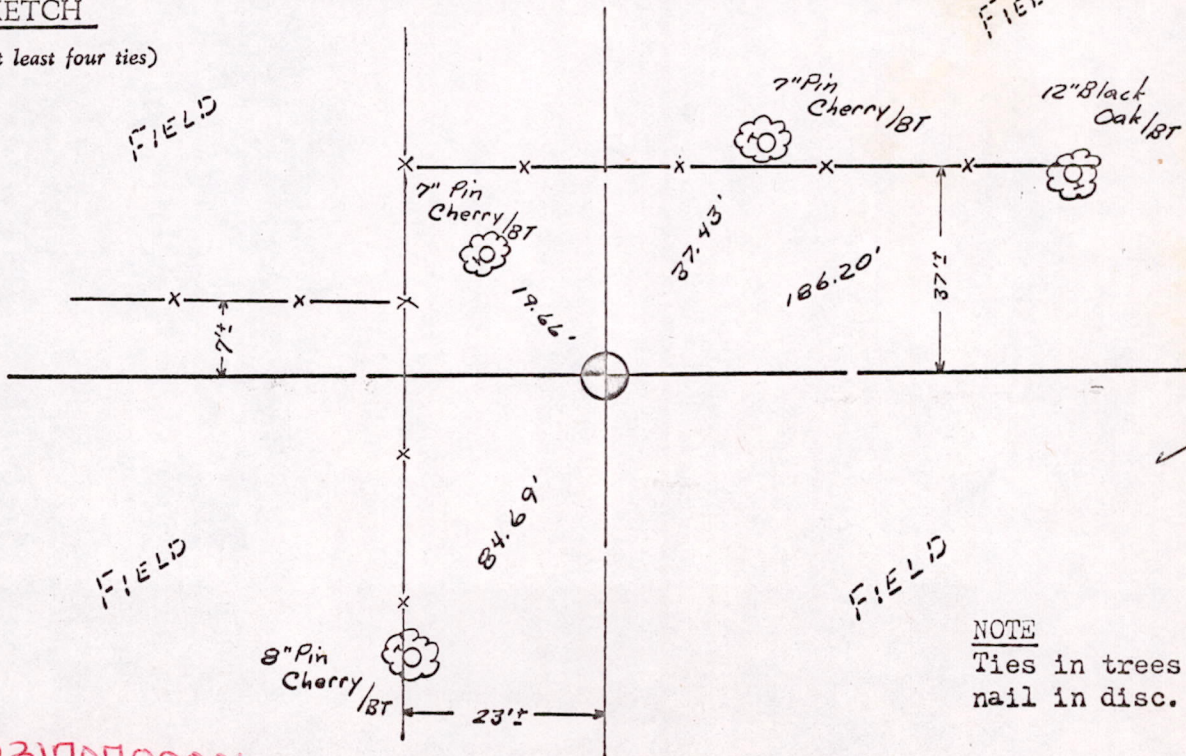
CERTIFIED CORRECT

Dale C. Hagen
Registered Land Surveyor

DATE: January 17, 1976

TIE SKETCH

(Show at least four ties)



NOTE

Ties in trees to nail in disc.

MIS23170700001
REVISED 1974