

ADAMS COUNTY

Survey Monument Record

TYPE OF MONUMENT: Standard Harrison

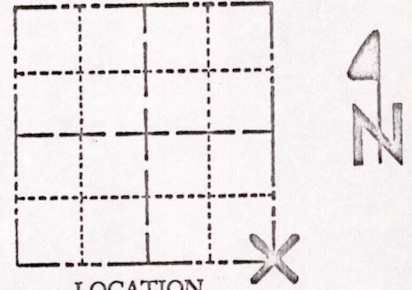
STATE PLANE COORDINATES: N _____
E _____

ELEVATION — M.S.L. DATUM: _____

THETA ANGLE: _____

FIELD BOOK: _____ PAGE _____

CORNER NO. 180
SECTION 23
TOWN 17
RANGE 7



LOCATION
(Indicated by 'X')

91

SEAL:

BASIS FOR MONUMENT LOCATION

(Use reverse side if necessary)

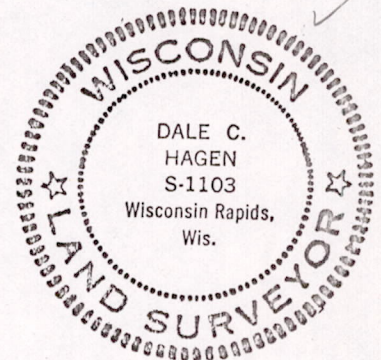
Show info such as: History of corner, with reference to Vol. and pg, dates, surveyor; exact description of monument replaced; if location computed, by taped or EDM traverse; landowner remarks, etc.

Ran EDM/transit traverse around Sections 22, 23 and 24 and tied into traverse around Section 27.

Excavation with backhoe yielded no evidence of the original corner or any remonumentation.

Set corner in center of Duck Creek Avenue and opposite substantial fenceline to the North and South. Location fits original dimensions well.

3-38-77
G.R.S.
OK



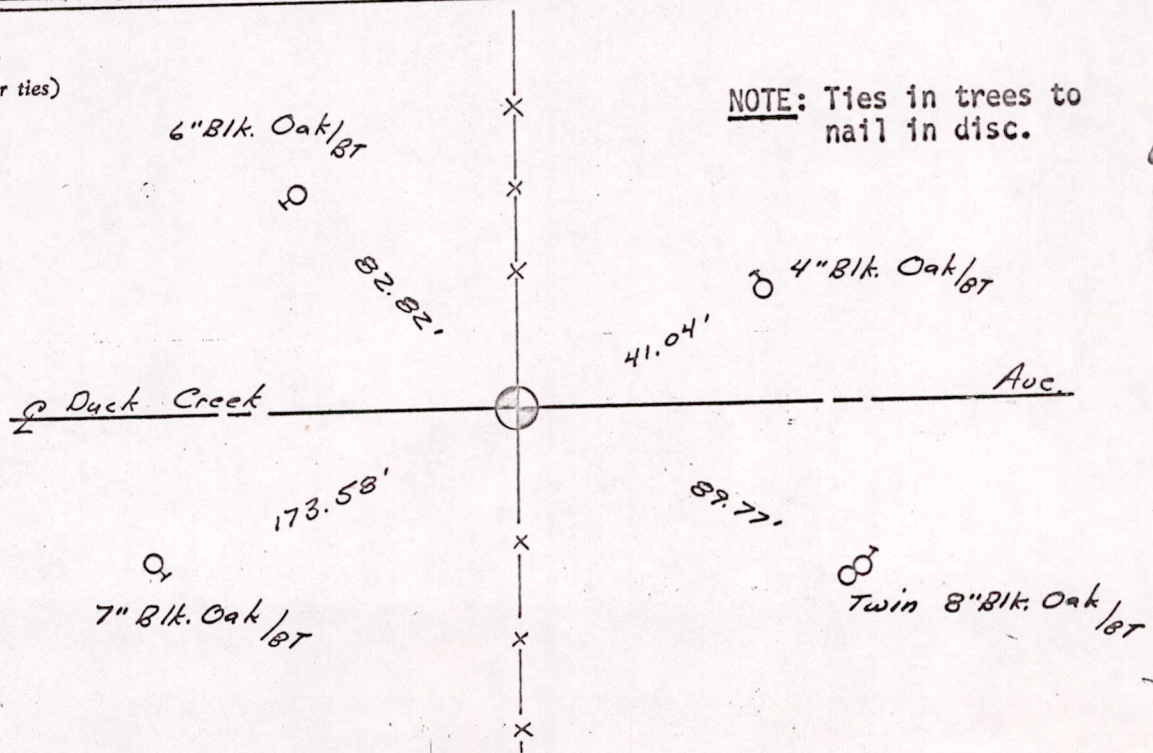
CERTIFIED CORRECT:

Dale C Hagen
Registered Land Surveyor

DATE: August 7, 1975

TIE SKETCH

(Show at least four ties)



M1523170700004