

ADAMS COUNTY

Survey Monument Record

TYPE OF MONUMENT: Harrison standard

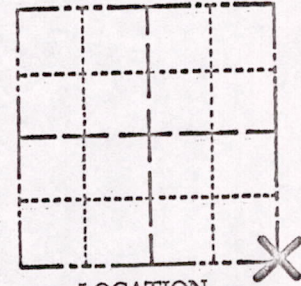
STATE PLANE COORDINATES: N _____
E _____

ELEVATION — M.S.L. DATUM: _____

THETA ANGLE: _____

FIELD BOOK: 101 PAGE 4

CORNER NO. 806
SECTION 24
TOWN 17
RANGE 7



LOCATION
(Indicated by 'X')

SEAL:



BASIS FOR MONUMENT LOCATION

(Use reverse side if necessary)

Show info such as: History of corner, with reference to Vol. and pg. dates, surveyor; exact description of monument replaced; if location computed, by taped or EDM traverse; landowner remarks, etc.

Excavated with backhoe. Found bottom 24" of 4" dia wood post. Monumented this point. Part of the old post is still in place. Location verified by an EDM traverse of the entire section.

3-28-77
GR-SS
OK

93

CERTIFIED CORRECT:

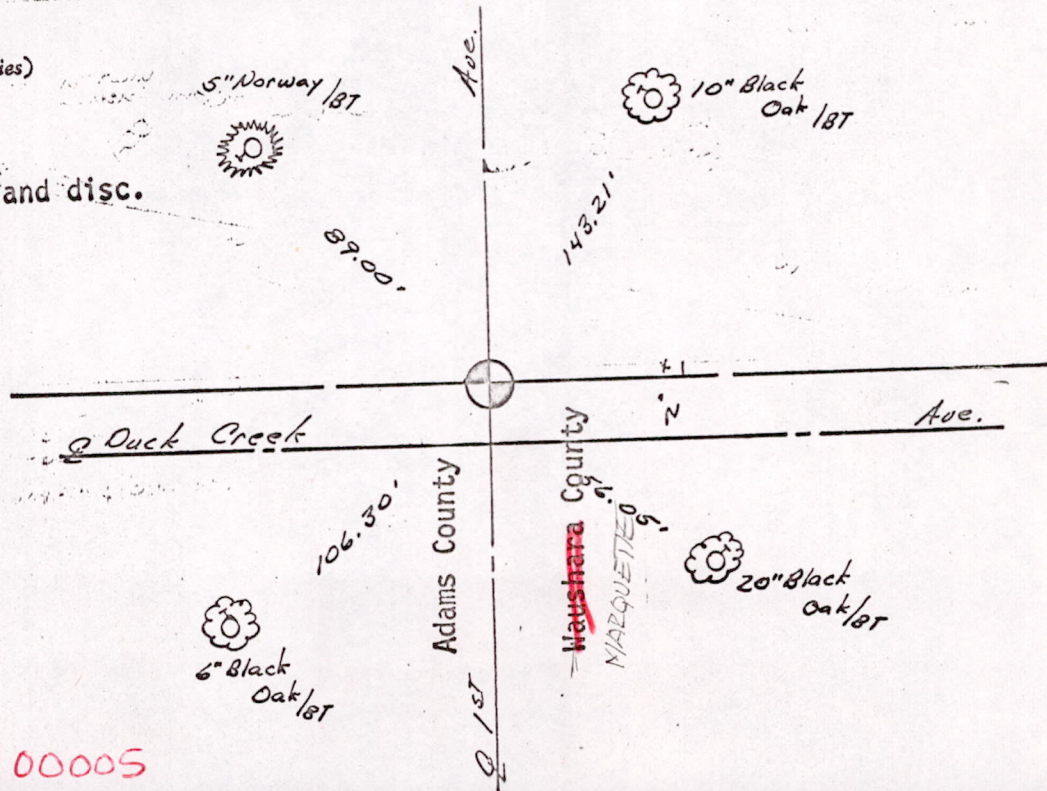
Anthony B. Kiedrowski
Registered Land Surveyor

DATE: 11/17/75

TIE SKETCH

(Show at least four ties)

Ties to nail and disc.



MIS 24170700005