

ADAMS COUNTY

Survey Monument Record

TYPE OF MONUMENT: 30" Harrison standard

STATE PLANE COORDINATES: N _____

E _____

ELEVATION — M.S.L. DATUM: _____

THETA ANGLE: _____

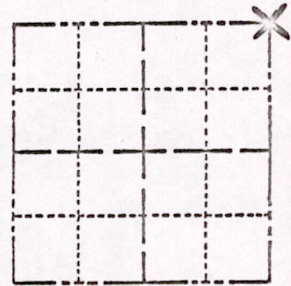
FIELD BOOK: _____ PAGE _____

CORNER NO. 555

SECTION 27

TOWN 17

RANGE 7



LOCATION
(Indicated by 'X')

89

SEAL:

BASIS FOR MONUMENT LOCATION

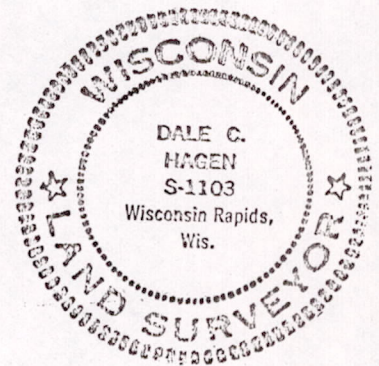
(Use reverse side if necessary)

Show info such as: History of corner, with reference to Vol. and pg, dates, surveyor; exact description of monument replaced; if location computed, by taped or EDM traverse; landowner remarks, etc.

Excavation with backhoe yielded no evidence of the original corner set in 1851 or of any subsequent remonumentation of the corner.

Ran EDM/transit traverse around entire Section 27, and set corner by doubling over line between Southeast and East Quarter corners of Section 27.

Set Standard Harrison Monument and tied same.



3-28-77
014
GR-55

CERTIFIED CORRECT:

Dale C. Hagen
Registered Land Surveyor

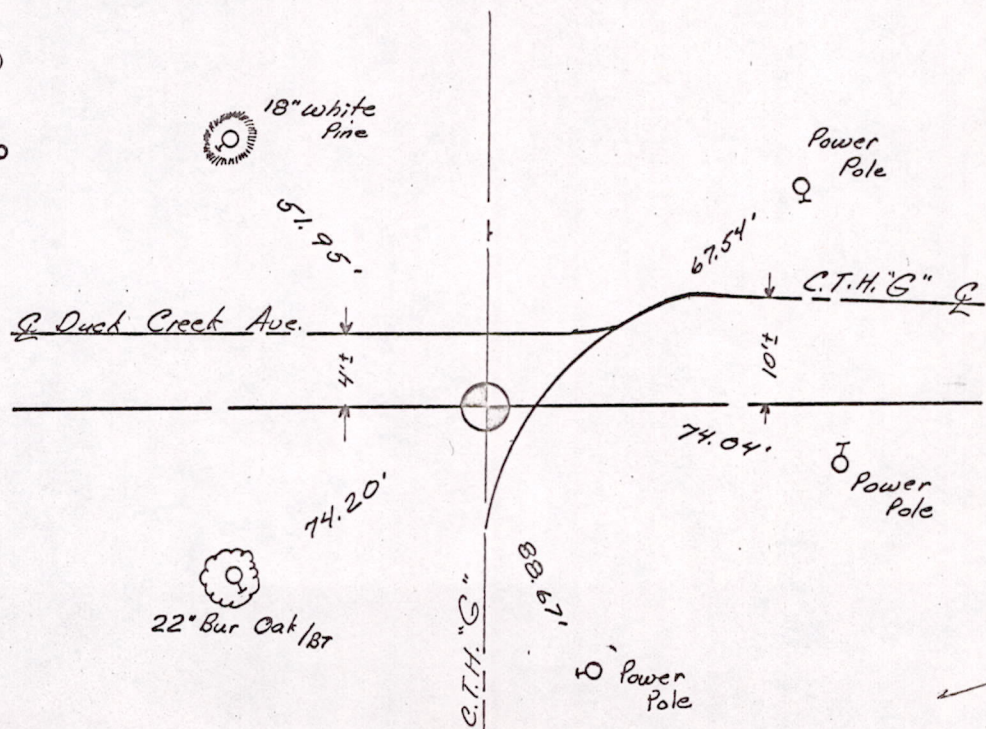
DATE: October 22, 1974

TIE SKETCH

(Show at least four ties)

Note

Ties in trees to nail in disc.



MIS27170700001