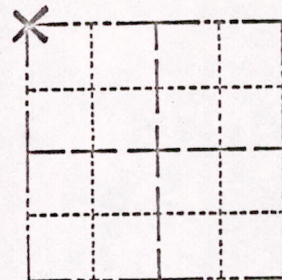


Survey Monument Record

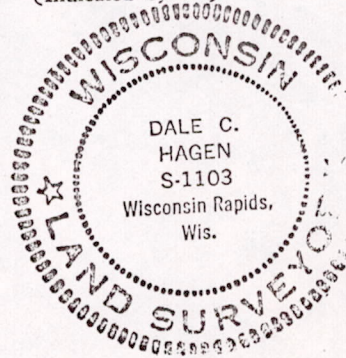
SECTION 27  
TOWN 17  
RANGE 7

TYPE OF MONUMENT: Standard Harrison  
STATE PLANE COORDINATES: N \_\_\_\_\_  
E \_\_\_\_\_  
ELEVATION — M.S.L. DATUM: \_\_\_\_\_  
THETA ANGLE: \_\_\_\_\_  
FIELD BOOK: \_\_\_\_\_ PAGE \_\_\_\_\_



LOCATION  
(Indicated by 'X')

SEAL:



BASIS FOR MONUMENT LOCATION

(Use reverse side if necessary)

Show info such as: History of corner, with reference to Vol. and pg, dates, surveyor; exact description of monument replaced; if location computed, by taped or EDM traverse; landowner remarks, etc.

Ran EDM/transit traverse around entire Section 27 to determine search areas.

Dug with backhoe for corner and found 9" x 12" x 8" Hardhead with point up with drill hole, stone having been dug in and apparently not disturbed.

Replaced same with Standard Harrison Monument.

3-15-77  
GR-55  
OK

CERTIFIED CORRECT:

Dale C. Hagen  
Registered Land Surveyor

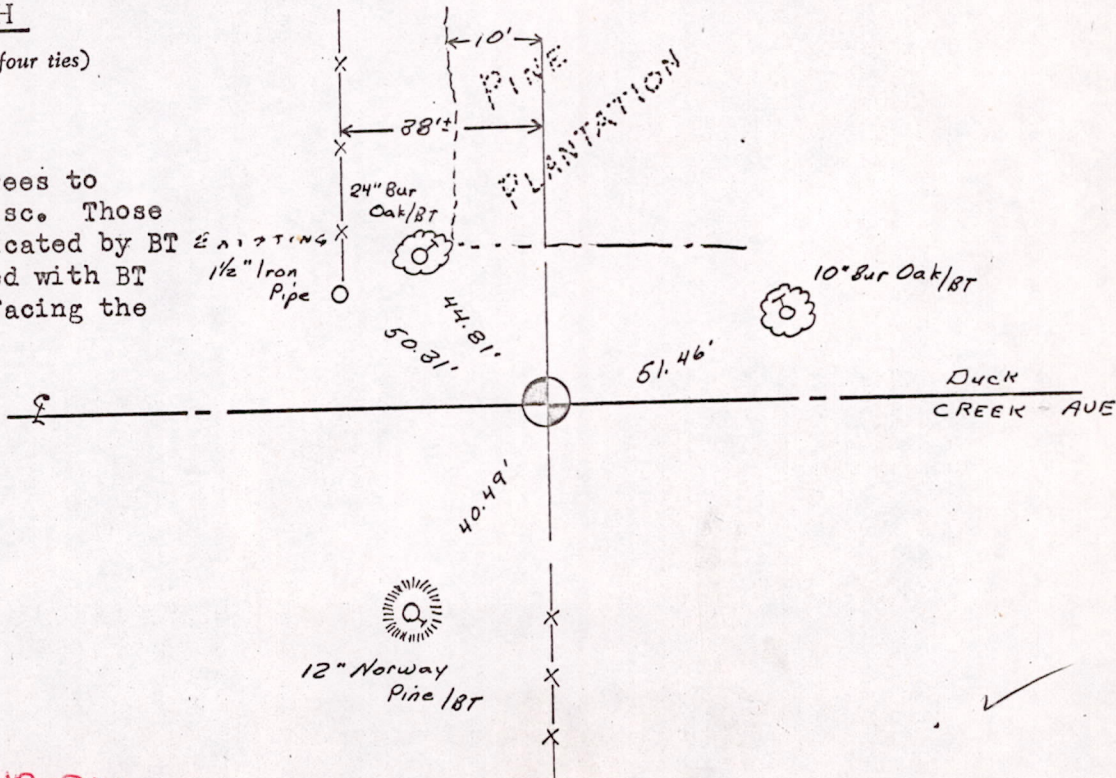
DATE: October 17, 1974

TIE SKETCH

(Show at least four ties)

NOTE

Ties in trees to nail in disc. Those trees indicated by BT are scribed with BT in blaze facing the corner.



M1527170700003