

ADAMS COUNTY

Survey Monument Record

TYPE OF MONUMENT: 30" Harrison standard

STATE PLANE COORDINATES: N _____

E _____

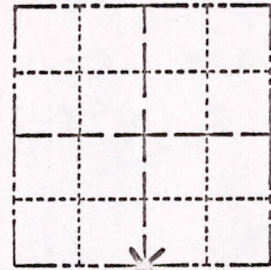
ELEVATION — M.S.L. DATUM: _____

THETA ANGLE: _____

FIELD BOOK: _____ PAGE _____

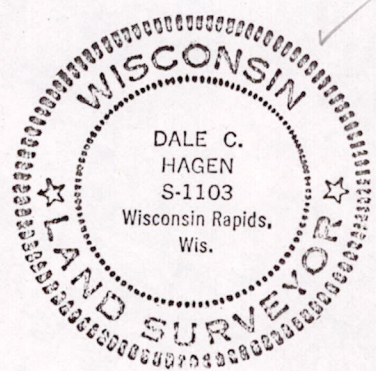
CORNER NO. 554
SECTION 27
TOWN 17
RANGE 7

108



LOCATION
(Indicated by 'X')

SEAL:



BASIS FOR MONUMENT LOCATION

(Use reverse side if necessary)

Show info such as: History of corner, with reference to Vol. and pg, dates, surveyor; exact description of monument replaced; if location computed, by taped or EDM traverse; landowner remarks, etc.

Ran EDM/transit traverse around Section 27 and Sections 34 and 35 to determine search area.

Excavation with backhoe yielded no evidence of the original corner set or any remonumentation.

Set Quarter Corner equidistant ~~and on line~~ between Southeast and Southwest section corners.

3-28-75
GR-SS
OK

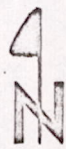
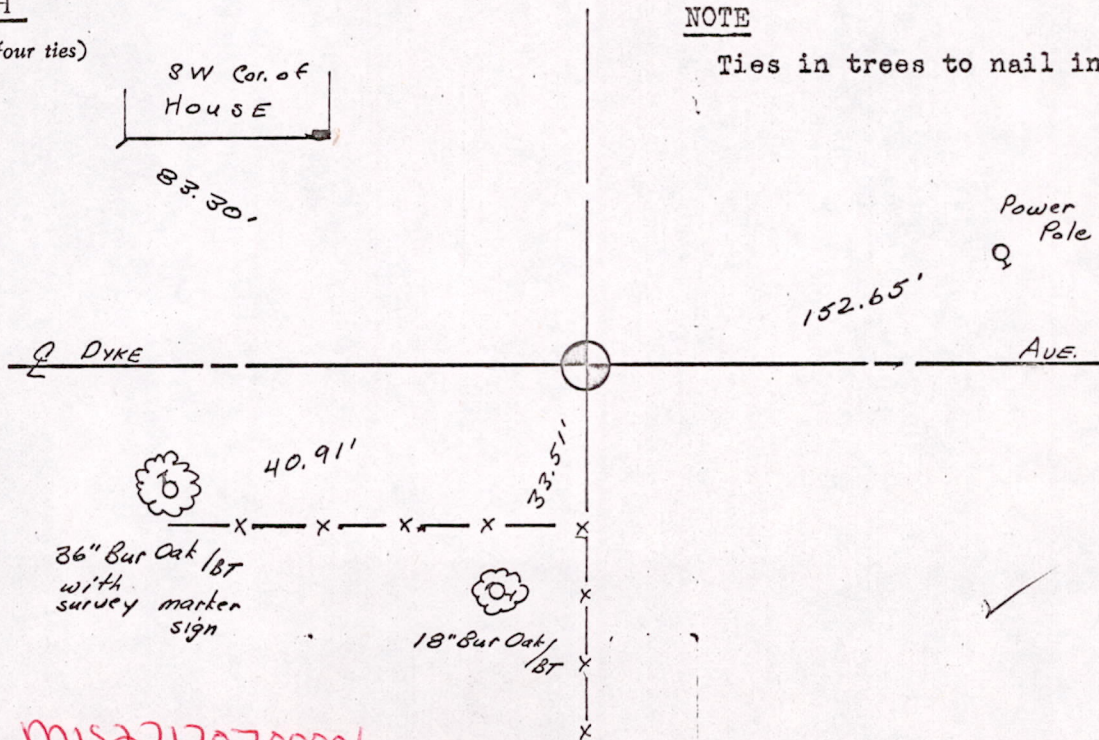
CERTIFIED CORRECT:

Dale C. Hagen
Registered Land Surveyor

DATE: October 22, 1974

TIE SKETCH

(Show at least four ties)



NOTE

Ties in trees to nail in disc.

MISA7170700006