

ADAMS COUNTY

Survey Monument Record

TYPE OF MONUMENT: Harrison standard

STATE PLANE COORDINATES: N _____
E _____

ELEVATION — M.S.L. DATUM: _____

THETA ANGLE: _____

FIELD BOOK: file PAGE _____

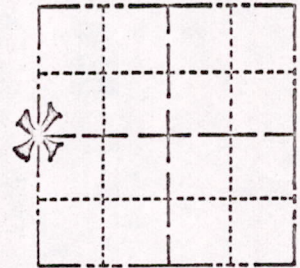
114

CORNER NO. 000

SECTION 31

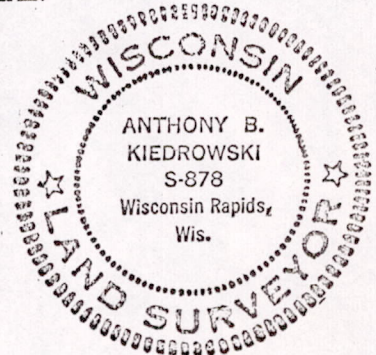
TOWN 17 N

RANGE 7 E



LOCATION
(Indicated by 'X')

SEAL:



BASIS FOR MONUMENT LOCATION

(Use reverse side if necessary)

Show info such as: History of corner, with reference to Vol. and pg, dates, surveyor; exact description of monument replaced; if location computed, by taped or EDM traverse; landowner remarks, etc.

Old remnants of fence lines is all we could find for evidence of the corner. Point monumented is half way between section corners, but not on a straight line. Entire section traversed to verify location.

OK
GR-SS
3-15-77

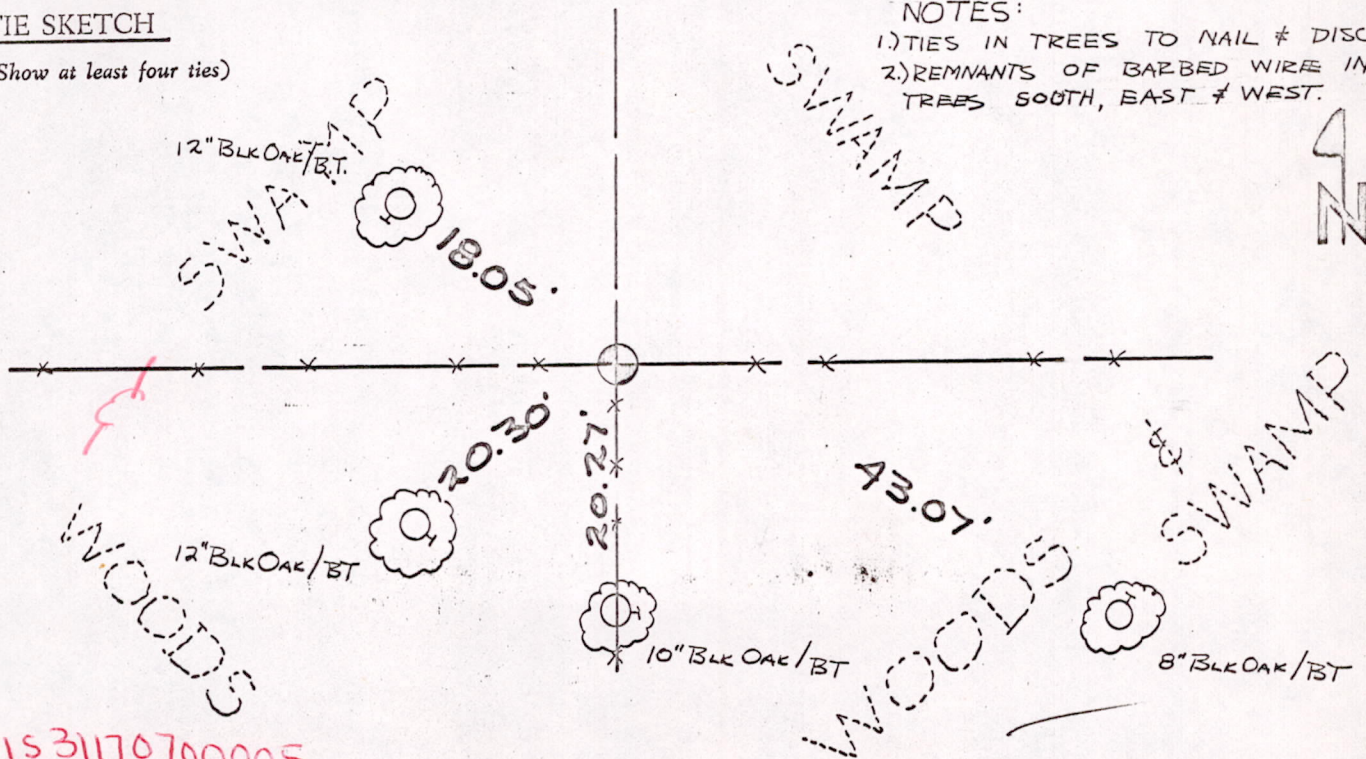
CERTIFIED CORRECT:

Anthony B. Kiedrowski
Registered Land Surveyor

DATE: 1/23/76

TIE SKETCH

(Show at least four ties)



NOTES:
1.) TIES IN TREES TO NAIL # DISC
2.) REMNANTS OF BARBED WIRE IN TREES SOUTH, EAST & WEST.



MIS31170700005