

ADAMS COUNTY

Survey Monument Record

TYPE OF MONUMENT: Standard Harrison Monument

STATE PLANE COORDINATES: N _____

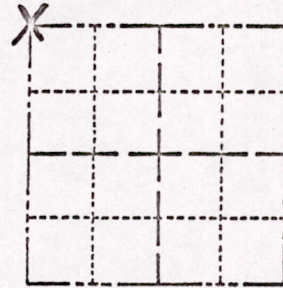
E _____

ELEVATION — M.S.L. DATUM: _____

THETA ANGLE: _____

FIELD BOOK: _____ PAGE _____

CORNER NO. 570
SECTION 35
TOWN 17
RANGE 7



LOCATION
(Indicated by 'X')

SEAL:

BASIS FOR MONUMENT LOCATION

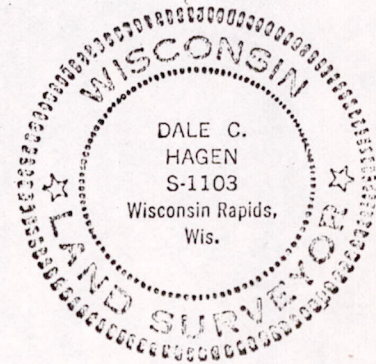
(Use reverse side if necessary)

Show info such as: History of corner, with reference to Vol. and pg. dates, surveyor; exact description of monument replaced; if location computed, by taped or EDM traverse; landowner remarks, etc.

Excavation with Backhoe found many field stones. Found a squared-off stone, 6" by 6" by 16", tapered, with a chisel line in the top. Also, along side of this tapered stone was found a yellow brick placed on end.

Examination of the subsoil indicated that the stone and brick had been dug in place.

The chiseled stone was replaced with a Standard Harrison Monument.



3-28-77
GR-552
OK

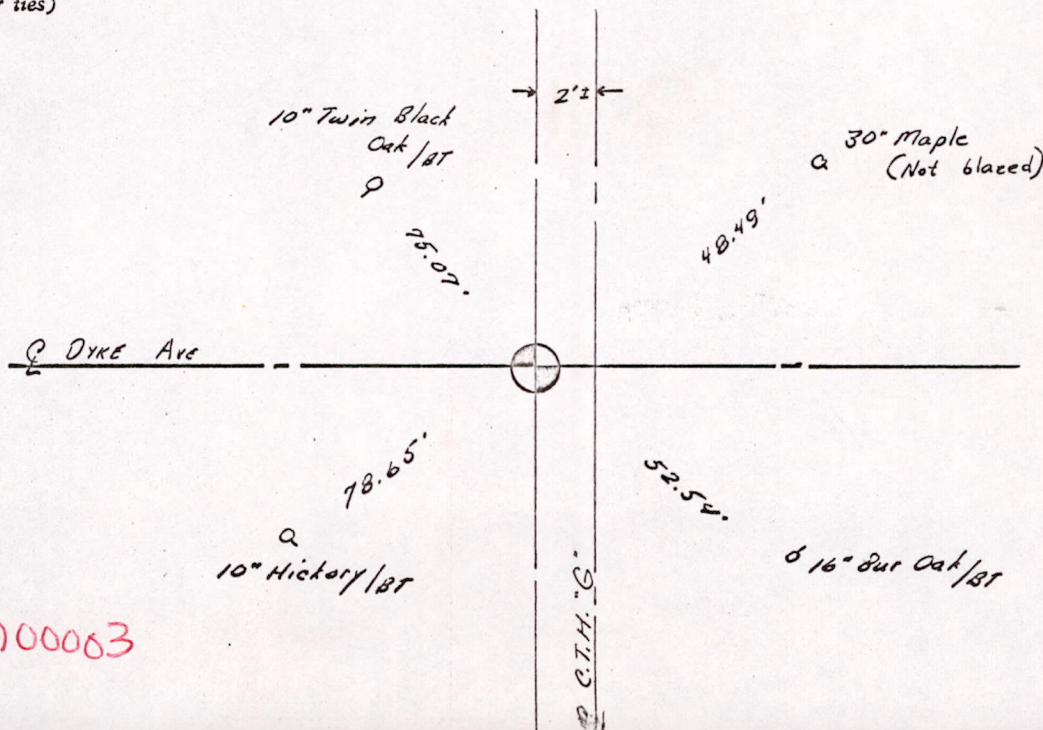
CERTIFIED CORRECT:

Dale C Hagen
Registered Land Surveyor

DATE: August 19, 1974

TIE SKETCH

(Show at least four ties)



M1535170700063