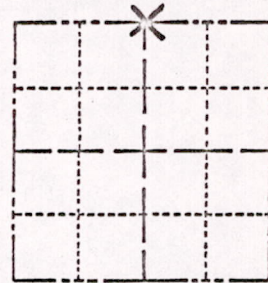


Survey Monument Record

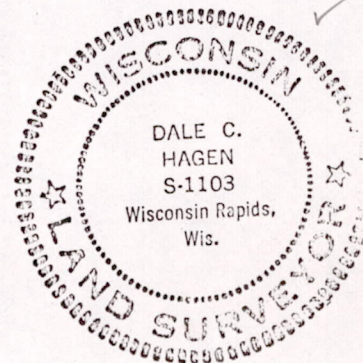
TYPE OF MONUMENT: Standard Harrison  
STATE PLANE COORDINATES: N \_\_\_\_\_  
E \_\_\_\_\_  
ELEVATION — M.S.L. DATUM: \_\_\_\_\_  
THETA ANGLE: \_\_\_\_\_  
FIELD BOOK: \_\_\_\_\_ PAGE \_\_\_\_\_

SECTION 35  
TOWN 17  
RANGE 7



LOCATION  
(Indicated by 'X')

SEAL:



BASIS FOR MONUMENT LOCATION

(Use reverse side if necessary)

Show info such as: History of corner, with reference to Vol. and pg, dates, surveyor; exact description of monument replaced; if location computed, by taped or EDM traverse; landowner remarks, etc.

Ran EDM/transit traverse of Section 35 and adjacent sections.

Excavated with backhoe and found only nail as set by Herman Holzmilller, Surveyor, for a survey to the South.

Established Quarter corner at the corner set by Holzmilller.

*3-28-77*  
*6-12-59*  
*OK*

CERTIFIED CORRECT:

*Dale C. Hagen*  
Registered Land Surveyor

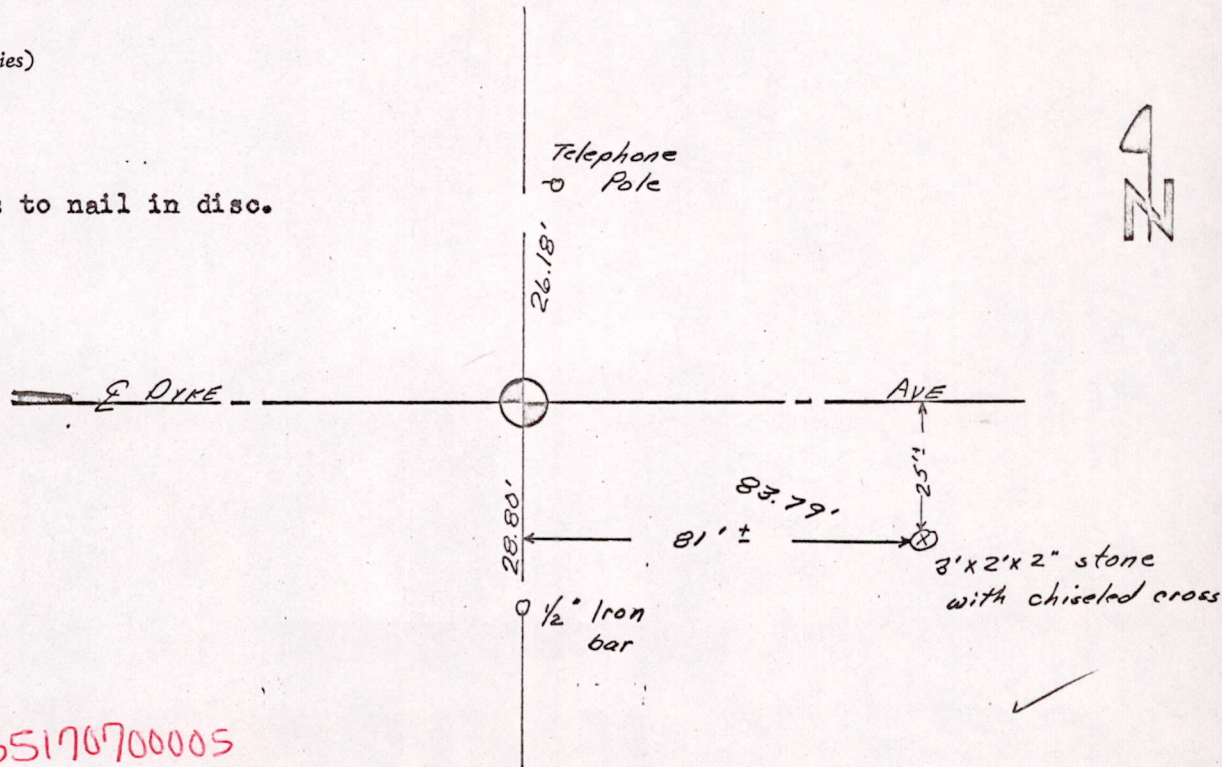
DATE: October 2, 1974

TIE SKETCH

(Show at least four ties)

NOTE

Ties in trees to nail in disc.



*M1535170700005*