

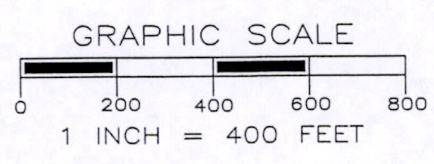
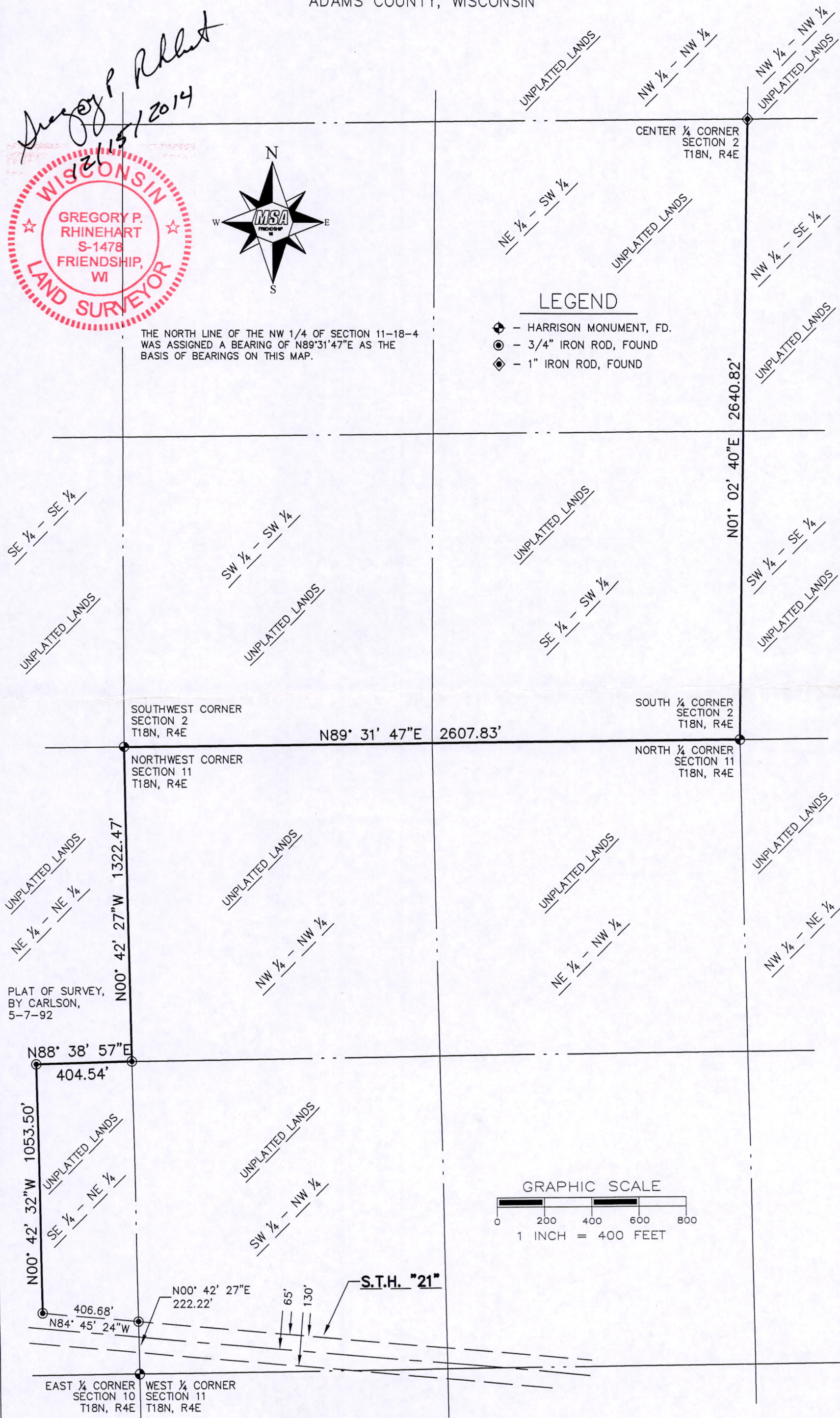
A LINE LOCATED IN THE SOUTHEAST QUARTER OF THE NORTHEAST QUARTER OF SECTION 10, PART OF SECTION 11 AND PART OF SECTION 2, TOWNSHIP 18 NORTH, RANGE 4 EAST, TOWN OF STRONGS PRAIRIE, ADAMS COUNTY, WISCONSIN

Gregory P. Rhinehart
12/15/2014



THE NORTH LINE OF THE NW 1/4 OF SECTION 11-18-4 WAS ASSIGNED A BEARING OF N89°31'47"E AS THE BASIS OF BEARINGS ON THIS MAP.

- LEGEND**
- ◆ - HARRISON MONUMENT, FD.
 - - 3/4" IRON ROD, FOUND
 - ◇ - 1" IRON ROD, FOUND



MSA
PROFESSIONAL SERVICES

TRANSPORTATION • MUNICIPAL DEVELOPMENT • ENVIRONMENTAL

307 Main Street P.O. Box 349 Friendship, WI 53934-0349
608-339-3808 Fax: 608-339-8078
© MSA Professional Services, Inc.

Cadd File:	P:\8605\868\000868042\CADD\C3D\00868042petenwell.dwg
Field Book:	FILE
Drawn by:	EJS
Date:	11/17/14
Checked by:	GPR
Scale:	1" = 400'

PLAT OF SURVEY

PREPARED FOR: INTEGRYS BUSINESS SUPPORT, LLC
P.O. BOX 19001
GREEN BAY, WI 54307-9001

Project No. 0334503
Sheet 1 of 1

PO502180431001