

SUNSET CONDOMINIUMS, PHASE 1 AND PHASE 2 AT NORTHERN BAY,  
 LOCATED IN PART OF THE NORTHEAST QUARTER OF THE NORTHEAST QUARTER AND  
 PART OF GOVERNMENT LOT 2, SECTION 36, TOWNSHIP 18 NORTH, RANGE 4 EAST,  
 TOWN OF STRONGS PRAIRIE, ADAMS COUNTY, WISCONSIN.

NORTHEAST CORNER  
 SECTION 36  
 T18N, R4E

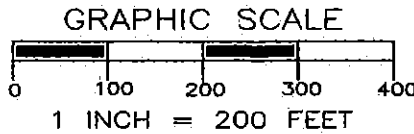
NUMBER	DIRECTION	DISTANCE	NUMBER	DIRECTION	DISTANCE
L1	S 89°58'49" W	176.03'	L35	S 49°33'31" W	73.43'
L2	N 04°16'22" E	150.32'	L36	S 72°12'06" W	92.86'
L3	N 13°10'43" W	57.65'	L37	S 00°05'27" E	102.67'
L4	N 21°41'47" W	119.96'	L38	S 89°54'30" E	126.41'
L5	N 15°15'44" W	126.56'	L39	S 00°03'50" W	174.93'
L6	N 21°41'38" W	85.43'	L40	N 89°45'16" W	203.33'
L7	N 09°47'39" E	144.84'	L41	N 00°01'40" W	251.90'
L8	N 09°47'52" E	24.54'	L42	N 89°57'15" W	253.46'
L9	N 88°24'32" W	167.44'	L43	N 00°06'10" W	118.58'
L10	S 09°38'32" W	171.95'	L44	S 89°33'42" W	36.72'
L11	S 67°17'54" W	229.39'	L45	N 62°54'14" W	47.81'
L12	N 54°12'04" W	190.79'	L46	N 89°59'22" W	86.62'
L13	N 60°13'31" W	162.54'	L47	N 00°01'40" W	30.00'
L14	S 30°28'58" W	445.83'	L48	N 89°57'15" W	223.50'
L15	S 52°30'07" E	246.37'	L49	N 00°06'10" W	88.84'
L16	S 38°28'37" W	436.99'	L50	S 89°33'42" W	30.00'
L17	S 03°01'44" E	96.91'			
L18	N 86°56'43" E	244.76'			
L19	S 03°00'37" E	149.98'			
L20	S 43°58'26" E	93.98'			
L21	S 79°00'52" E	108.99'			
L22	N 71°35'51" E	122.20'			
L23	S 89°13'00" E	208.21'			
L24	S 59°24'07" E	136.82'			
L25	S 64°25'33" E	113.22'			
L26	S 80°41'27" E	49.32'			
L27	N 00°01'09" W	515.09'			
L28	N 80°52'44" W	287.75'			
L29	N 67°24'00" W	504.96'			
L30	S 89°58'04" W	300.67'			
L31	N 62°29'52" W	308.27'			
L32	S 82°08'18" W	289.05'			
L33	N 79°01'56" W	166.59'			
L34	N 43°58'26" W	100.26'			

LEGEND

- ◆ - HARRISON MONUMENT, FD.
- - 3/4" IRON ROD, FOUND
- ▲ - MAG NAIL, FOUND
- - 3/4" X 18" IRON ROD, 1.5 #/FT., PLACED

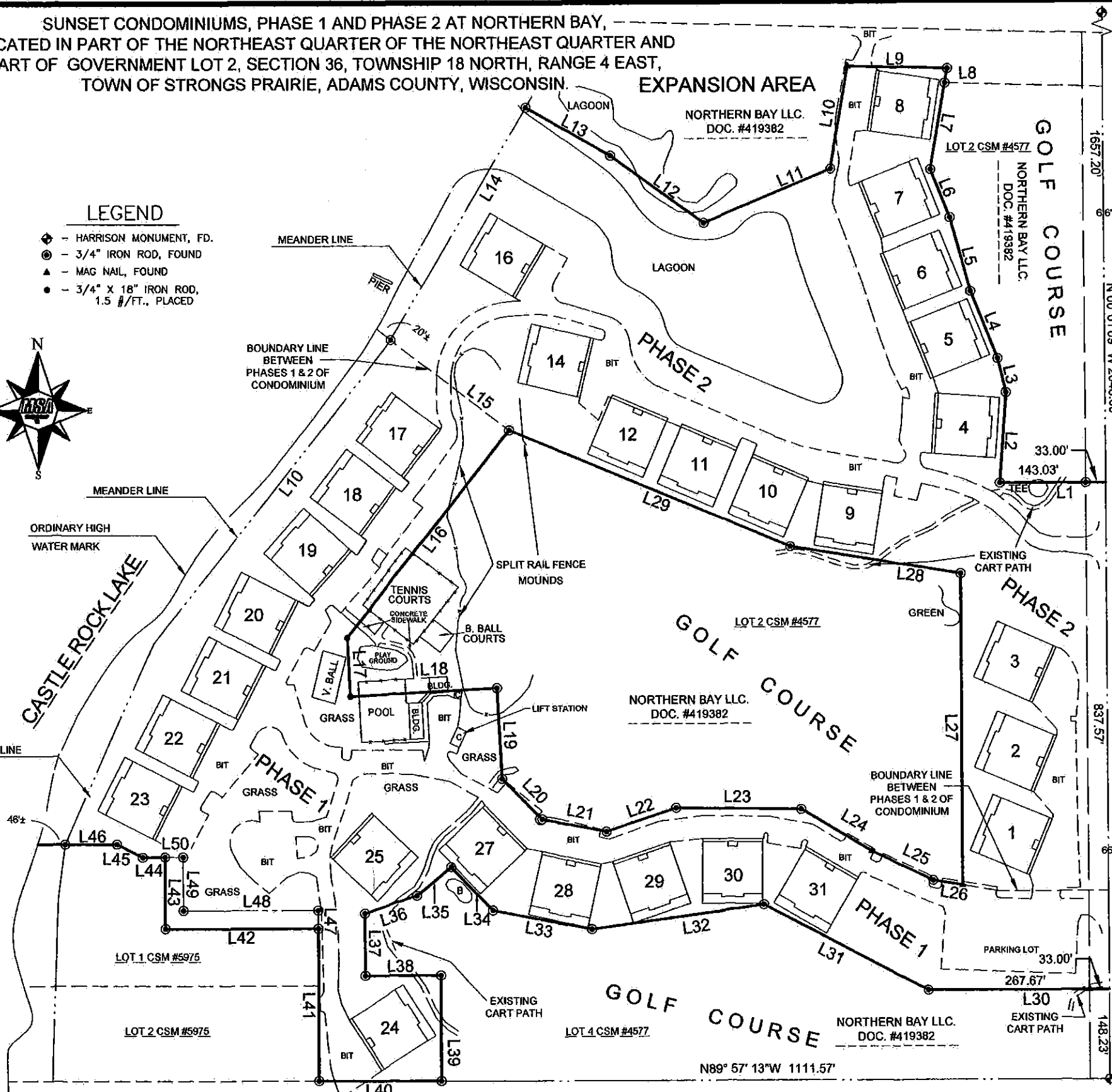


THE EAST LINE OF THE NE 1/4 OF SECTION 36-18-4  
 WAS ASSIGNED A BEARING OF N00°01'15"W AS  
 THE BASIS OF BEARING ON THIS MAP.



*Greg P. Rhinehart* 11/30/2016  
 MSA PROFESSIONAL SERVICES  
 GREGORY P. RHINEHART, PROFESSIONAL LAND SURVEYOR, S-1478  
 DATE

NOTE: IF THE SURVEYOR'S SEAL AT LEFT IS NOT RED IN COLOR, THE SURVEY IS A COPY AND SHOULD BE ASSUMED TO CONTAIN UNAUTHORIZED ALTERATIONS. THE CERTIFICATION CONTAINED ON THIS DOCUMENT SHALL NOT APPLY TO COPIES.



EAST 1/4 CORNER  
 SECTION 36  
 T18N, R4E



TRANSPORTATION • MUNICIPAL  
 DEVELOPMENT • ENVIRONMENTAL  
 PO BOX 349, FRIENDSHIP, WI 53943  
 608-339-3808  
 © MSA Professional Services, Inc.

Cadd File: P:\11300\11390s\11397\11397004\cadd\c3d\11397004SUNSET.dwg  
 Field Book: FILE Drawn by: EJS Date: 11/21/16  
 Page No.: FILE Checked by: GPR Scale: 1" = 300'

PLAT OF SURVEY

:PREPARED FOR: SUNSET CONDOMINIUM ASSOCIATION  
 1844 20TH AVENUE  
 ARKDALE, WI 54613

Project No.  
 11397004  
 Sheet  
 1 of 1

POS3618041004