

CERTIFICATE OF SURVEY.

STATE OF WISCONSIN,
ADAMS COUNTY.

vs. M. L. Smith

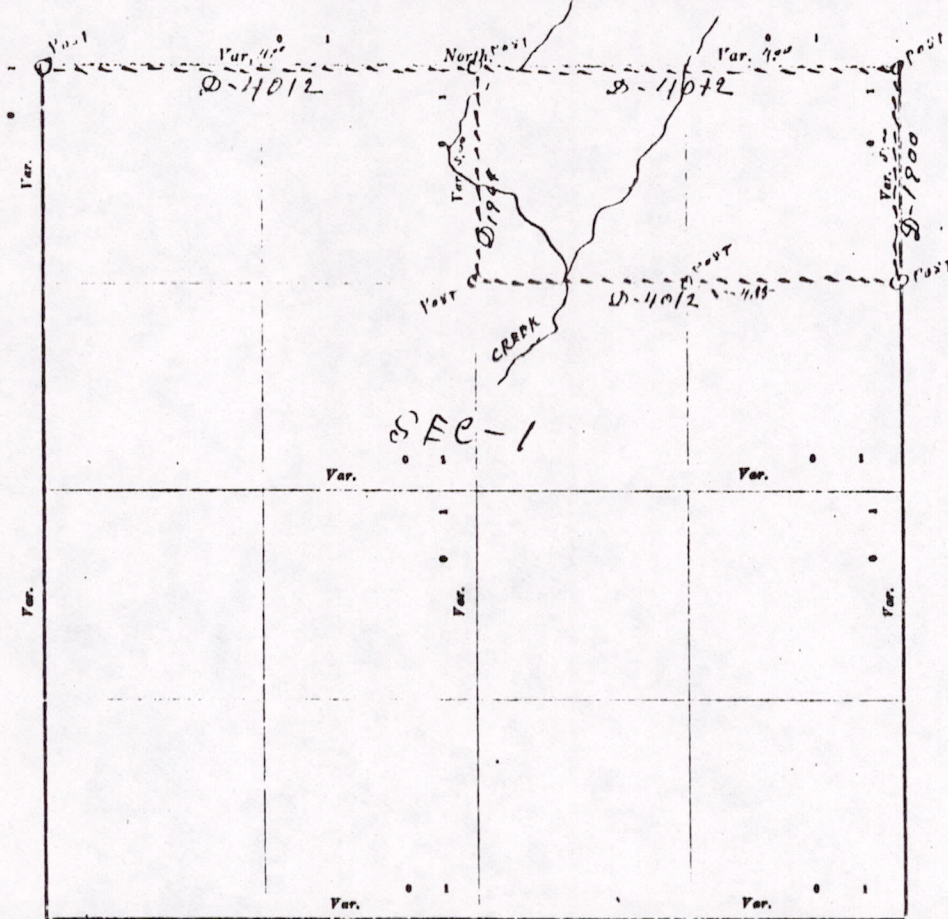
Surveyor, in and for the County and State aforesaid, do

hereby certify that I have surveyed and subdivided Section ONE, Township 18, North of Range 5, East of 4th Principal Meridian, as represented by the courses and distances on the following plat, and annexed field-notes of survey:

Established the center of the section at the point of intersection of straight quarter lines

Established all quarter-quarter corners upon the section boundary at proportional distances between known section and quarter section corners, according to the original field-notes of the Government survey.

Established all lost corners at proportionate distances between known corners, according to original field-notes of the Government survey:



Plat of Section ONE, Township 18 North, Range 5 East of 4th Principal Meridian. Scale, 80 chains to 6 inches. The figures in red ink are the lengths of the lines as stated in the field-notes of the Government survey.

Declination of the Magnetic Meridian from the True Meridian _____ East.

Surveyed and subdivided this 24 day of November A. D. 1913, in accordance with the State Laws and Instructions of the Commissioner of the General Land Office, and recorded on pages _____ of Register in the County Surveyor's office.

WITNESS my hand this 24th day of November A. D. 1913.

M. L. Smith County Surveyor.

The above work was done at the request of Peter Peterson

*Vic
Mile*

*St
at
28
at
West
the
to*

DESCRIPTION of Section, Quarter Section and Quarter quarter Section Corners of Section

Township _____ North, Range _____ East of _____ Principal Meridian.

N. B. - The variation of needle adopted in establishing corners is _____

ould, do
4. ch.

section
urvey:

hains to 6

ructions of

urveyor.

in

No.	Government Corners.	Bearing Trees.	In. dia.	Courses they bear.	Links Distant.	Bearing Trees.	In. dia.	Courses they bear.	Links Distant.
1	N. W. Sec. cor. Identified								
2	N. E. Sec. cor. Identified								
3	S. E. Sec. cor. Identified								
4	S. W. Sec. cor. Identified								
5	N. 1/4 Sec. cor. Identified								
6	E. 1/4 Sec. cor. Identified								
7	S. 1/4 Sec. cor. Identified								
8	W. 1/4 Sec. cor. Identified								
No.	SUBDIVISION CORNERS,								
1	Center 1/4 Sec. cor.								
2	North 1/4-1/4s N. W. qr.								
3	East 1/4-1/4s N. W. qr.								
4	South 1/4-1/4s N. W. qr.								
5	West 1/4-1/4s N. W. qr.								
6	Center 1/4-1/4s N. W. qr.								
7	North 1/4-1/4s N. E. qr.								
8	East 1/4-1/4s N. E. qr.								
9	South 1/4-1/4s N. E. qr.								
10	Center 1/4-1/4s N. E. qr.								
11	East 1/4-1/4s S. E. qr.								
12	South 1/4-1/4s S. E. qr.								
13	West 1/4-1/4s S. E. qr.								
14	Center 1/4-1/4s S. E. qr.								
15	South 1/4-1/4s S. W. qr.								
16	West 1/4-1/4s S. W. qr.								
17	Center 1/4-1/4s S. W. qr.								

Blk Pine 1/4 S-43-W 49
Blk oak 10 S-27 1/2-E 65

NAMES OF SWORN ASSISTANTS.

CHAINMEN.	FLAGMEN.	AXMEN.
Victor Nelson Mela Harrison		

MINUTES.

Starting at the identified NW corner of section one T-18-R-5-C and ran
west at 4 S-V 40 chains & 12 links to the established Quarter Post on the North
side of the section. Then 40 chains & 12 links to the NE corner of the section
also Township corner. Then south on Range line at 5-D-V 19 chains to
Post. Then west on the 8th line at 4-15-D-V 40 chains & 12 links to Post on
the N & S Quarter line. Then North on the N & S Quarter line 18 chains & 64 links
to the established Quarter Post on the north side of the section, on the town line.

W. L. Smith County Surveyor

MISO1180500003