

ADAMS
~~JUNEAU~~ COUNTY

Survey Monument Record

TYPE OF MONUMENT: PK NAIL

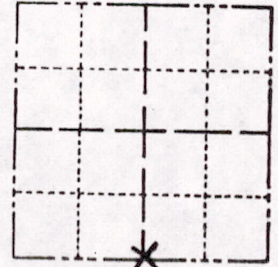
STATE PLANE COORDINATES: N _____
 E _____

ELEVATION — M.S.L. DATUM: _____

THETA ANGLE: _____

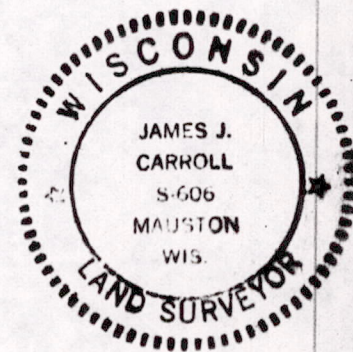
FIELD BOOK: _____ PAGE _____

CORNER NO. _____
 SECTION 8
 TOWN 18 N
 RANGE 5 E



LOCATION
 (Indicated by 'X')

SEAL:



BASIS FOR MONUMENT LOCATION

(Use reverse side if necessary)

Show info such as: History of corner, with reference to Vol. and pg, dates, surveyor; exact description of monument replaced; if location computed, by taped or EDM traverse; landowner remarks, etc.

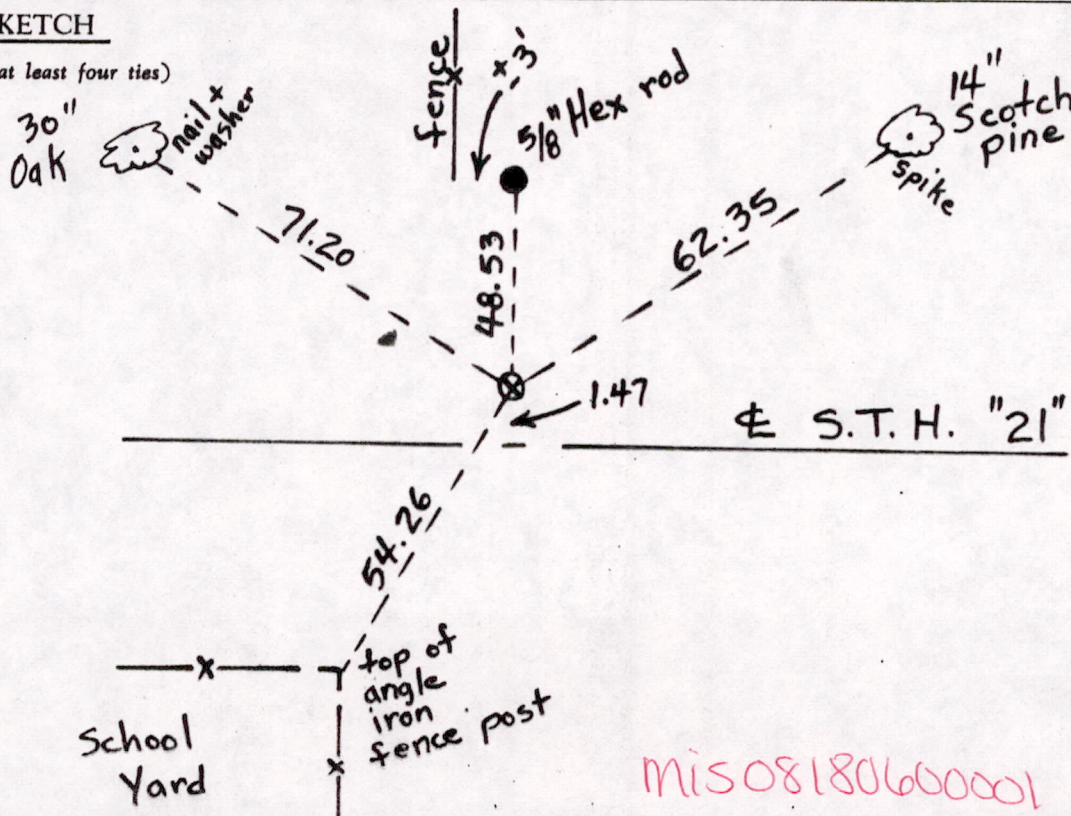
Headless PK nail found in place replace with a PK nail.
 This corner is on the straight line between the SW corner and the SE corner of the section, 2648.98 feet from the SW corner and 2648.78 feet from the SE corner.

CERTIFIED CORRECT:

James J. Carroll
 Registered Land Surveyor
 DATE: April 26, 1980

TIE SKETCH

(Show at least four ties)



MIS08180600001