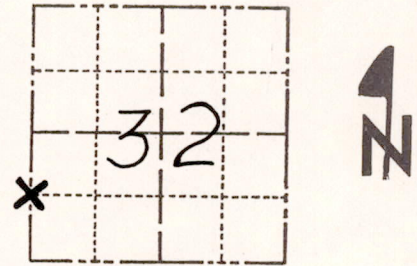


Government Land Corner Certificate

ADAMS County
 TYPE OF MONUMENT: 1 1/2" x 48" IRON PIPE
 STATE PLANE COORDINATES: N _____
 E _____
 ELEVATION — M.S.L. DATUM: _____
 THETA ANGLE: _____
 FIELD BOOK: No. 54 PAGE 5
 DRAWN BY: 101/71 and

CORNER NO. _____
 SECTION 32
 TOWN 18
 RANGE 5



LOCATION
(Indicated by 'X')

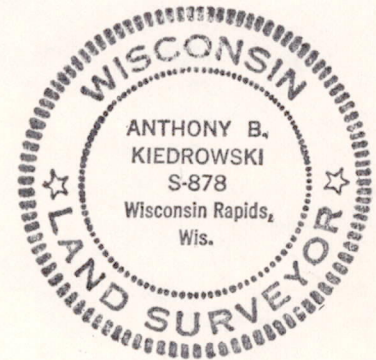
BASIS FOR MONUMENT LOCATION

Show info such as: History of corner, with reference to Vol. and pg., dates, surveyor; exact description of monument replaced; if location computed, by taped or EDM traverse; landowner remarks, etc. (Use reverse side if necessary)

Excavated with backhoe. Found bottom 8" of a 6x6" red sandstone. Stone called for by M.C. Smith in his plat of Holmsville, 1912. Excavation witnessed by Adams County Highway Commissioner Rudy Jensen and local landowner Mrs. Melvin Mills.

Stone removed and replaced with a 2"x30" iron pipe.

SEAL:



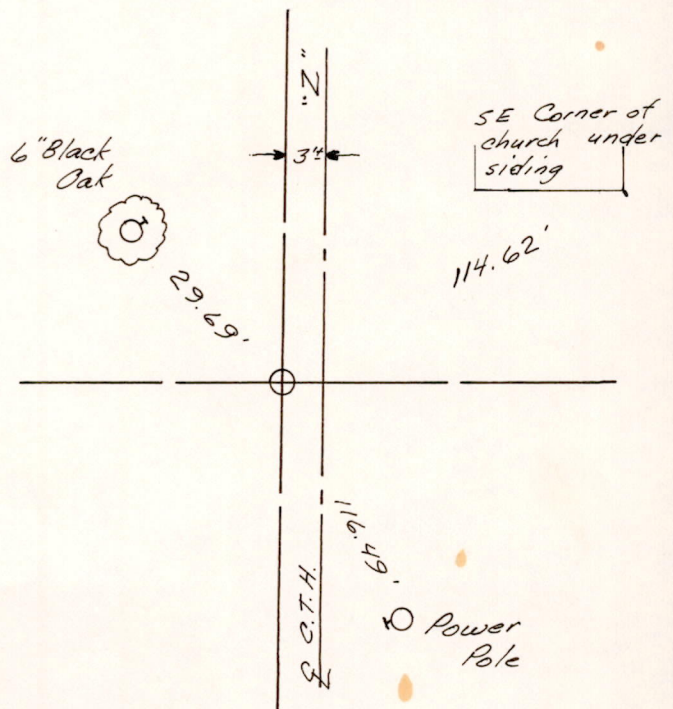
DATA SHOWN HERE ON
CERTIFIED CORRECT:

Anthony B. Kiedrowski
Registered Land Surveyor

DATE: 4/12/77

TIE SKETCH

Show at least four ties, also fence lines, roads, topo, size and type of witness trees' and if off road - best way to arrive at corner.



MAINTENANCE RECORD

Date	Init.	Remarks