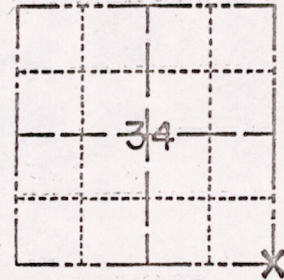


ADAMS COUNTY

Survey Monument Record

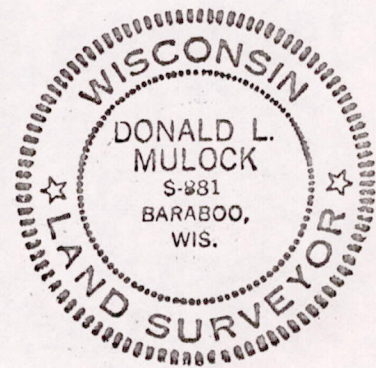
TYPE OF MONUMENT: HARRISON
STATE PLANE COORDINATES: N 2000.00 ASSUMED E 5400.00
ELEVATION - M.S.L. DATUM:
THETA ANGLE:
FIELD BOOK: 440 ADAMS PAGE -1-

CORNER NO. 470
SECTION 34
TOWN 18 N
RANGE 5 E



LOCATION (Indicated by 'X')

SEAL:



BASIS FOR MONUMENT LOCATION

(Use reverse side if necessary)

Show info such as: History of corner, with reference to Vol. and pg, dates, surveyor; exact description of monument replaced; if location computed, by taped or EDM traverse; landowner remarks, etc.

WE FOUND OLD WOOD POST (DOWN) THAT FITS IN ALL DIRECTIONS. SHOWED CORNER TO CO. SURVEYOR (KIEDROWSKI) WHO WAS IN AGREEMENT. SET HARRISON MONUMENT 3-5-74 WITH TIES (SEE BELOW).

LOCATION BY EDM. TRAVERSE.

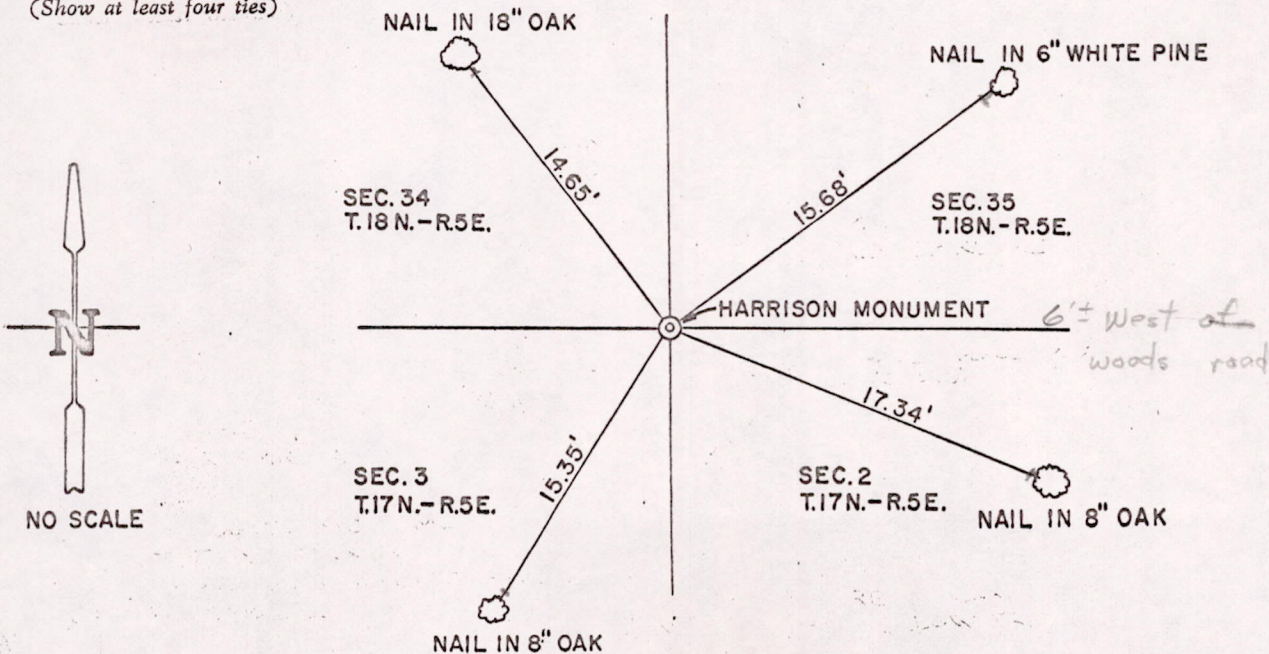
CERTIFIED CORRECT:

Donald L. Mulock
Registered Land Surveyor
DATE: MARCH 7-1974

Everything o.k. 10/31/75 DM-SS
ties to nails facing corner

TIE SKETCH

(Show at least four ties)



NO SCALE

MIS 34180500001