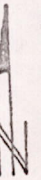
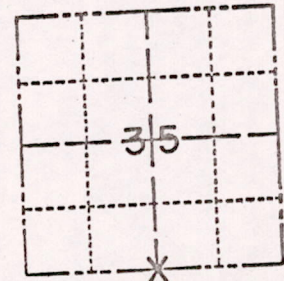


# ADAMS COUNTY

## Survey Monument Record

TYPE OF MONUMENT: HARRISON  
 STATE PLANE COORDINATES: N 1992.57  
 ASSUMED E 8059.79  
 ELEVATION — M.S.L. DATUM: \_\_\_\_\_  
 THETA ANGLE: \_\_\_\_\_  
 FIELD BOOK: 440 ADAMS PAGE -11-

CORNER NO. 468  
 SECTION 35  
 TOWN 18 N.  
 RANGE 5 E.



LOCATION  
(Indicated by 'X')

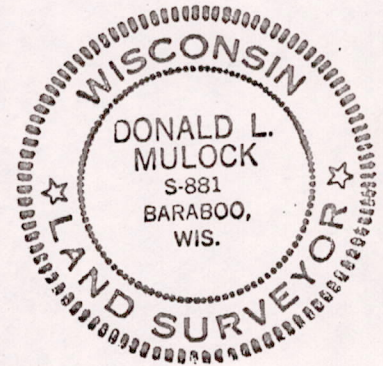
### BASIS FOR MONUMENT LOCATION

(Use reverse side if necessary)

Show info such as: History of corner, with reference to Vol. and pg, dates, surveyor; exact description of monument replaced; if location computed, by taped or EDM traverse; landowner remarks, etc.

NO MONUMENT REPLACED.  
 LOCATION COMPUTED AND SET VIA  
 E.D.M. TRAVERSE.  
 SET IN NORTH-SOUTH FENCE AND  
 FITS IN ALL DIRECTIONS.

SEAL:



CERTIFIED CORRECT:

*Donald L. Mulock*

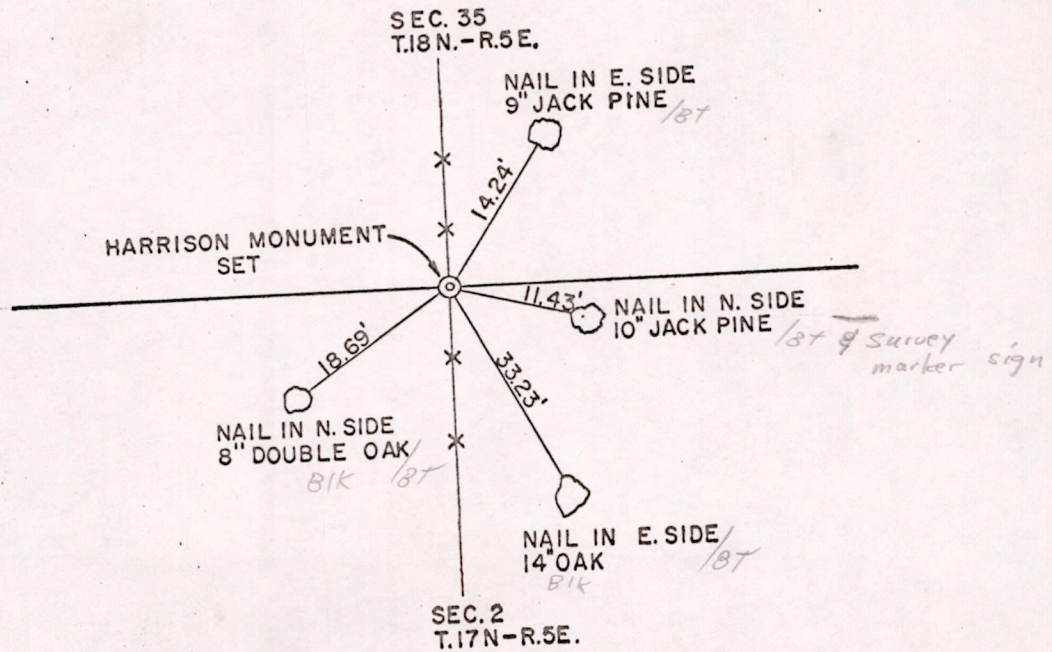
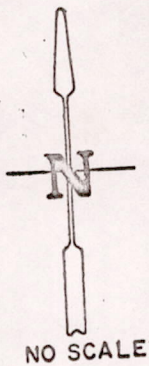
Registered Land Surveyor

DATE: MARCH 7-1974

*Everything o.k. 10/31/75 DM-SS*

### TIE SKETCH

(Show at least four ties)



MIS35180500002