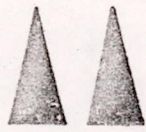


PLAT OF SURVEY

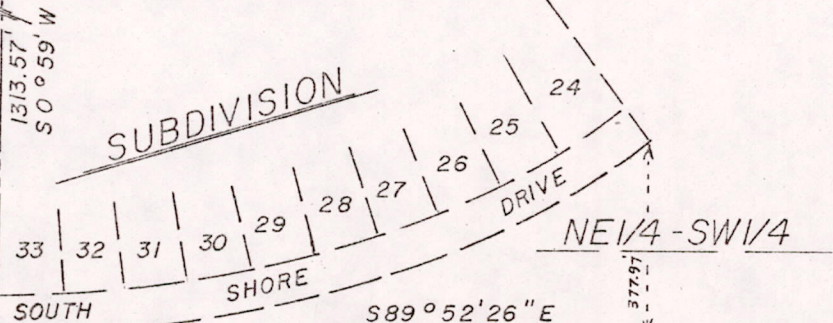


MID-STATE ASSOCIATES, INC.

1111 8 TH ST.

BARABOO, WISCONSIN

W1/4 CORNER,
SECTION 14, T18N,
R5E, HARRISON
MONUMENT



NE 1/4 - SW 1/4

NE 1/4 - SW 1/4

3/4" x 24" IRON ROD SET

1/16 COR.

SOUTH

S 89° 52' 26" E

EX. 2" IRON PIPE

1314.25'
NORTH LINE SW 1/4 - SW 1/4

SHORES

- 173
- 172
- 171
- 170
- 169
- 168
- 167
- 166
- 165
- 164
- 163
- 162

1313.57'
WEST LINE SW 1/4 - SW 1/4

N 0° 59' E

SW 1/4 - SW 1/4

39.703 AC.

1316.60'
S 0° 53' 47" W

SE 1/4 - SW 1/4

S 1/4 CORNER,
SECTION 14, T18N,
R5E, HARRISON
MONUMENT

1/16 COR.

1316.20'

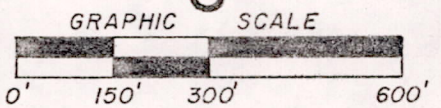
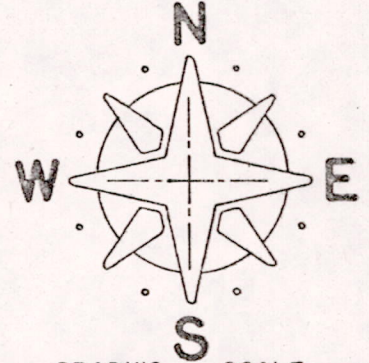
N 89° 44' 26" W

2632.40'

SW CORNER, SECTION 14,
T18N, R5E, HARRISON MONUMENT

CLIENT: ORVILLE HOHENSTEIN
RT. 3
ARKDALE, WISC.

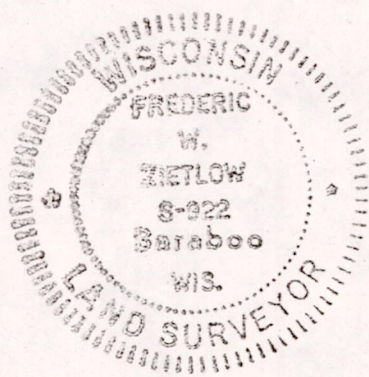
Survey of the north line and west line of the SW 1/4 - SW 1/4 Section 14, T18N, R5E, Town of Strongs Prairie, Adams County, Wisconsin.



RECEIVED

JAN 15 1977

ADAMS CO PLANNING & ZONING DEPT.



BY: Frederic W. Zetlow
REGISTERED LAND SURVEYOR
SEPT. 14, 1976

I hereby certify that I have surveyed the property shown on this plat and that this plat is a correct representation of said survey to the best of my knowledge and belief.

SCALE: 1" = 300'

PROJECT NO.: 6692

Pos 14180531002