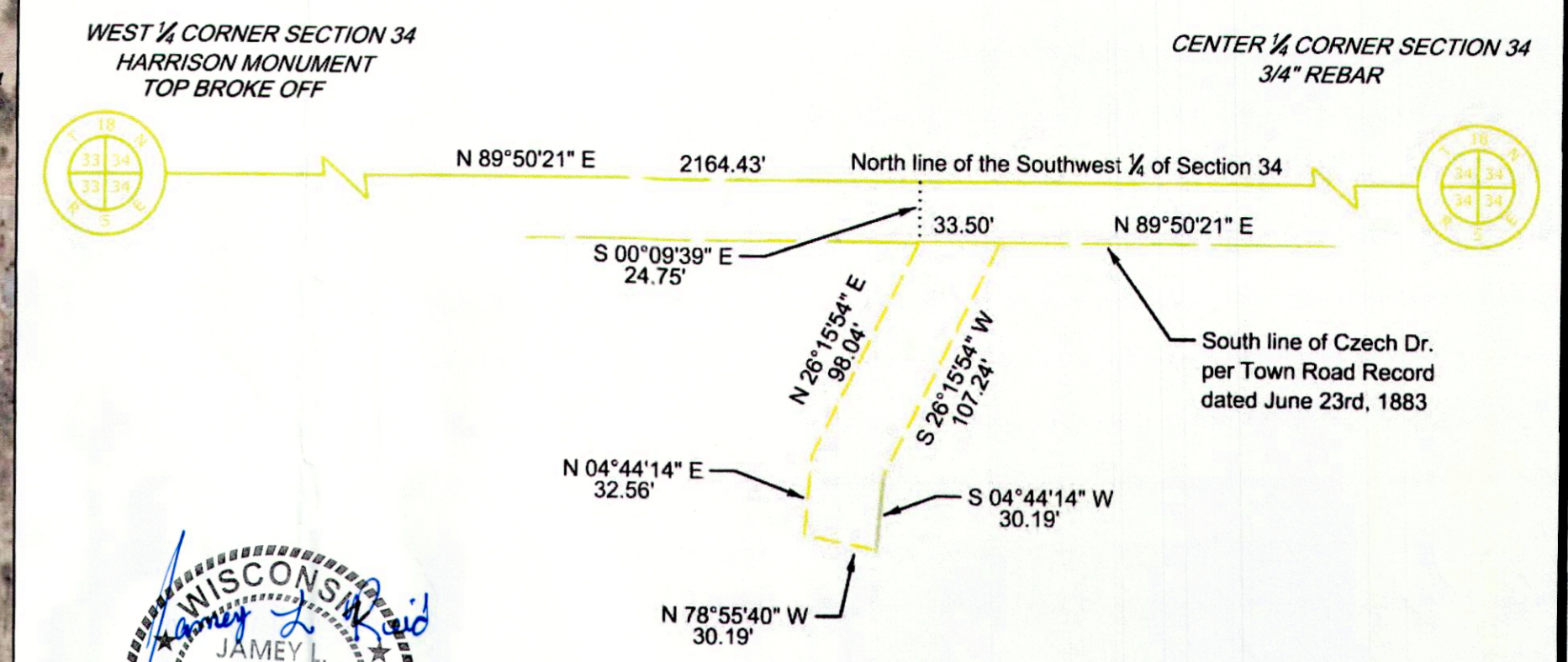


Ayres_pdr.pltcdg
 2/18/2015 8:56:10
 M:\SURVEYSUR\26-0633.00 NRCS Boundary Surveys\2014 projects\26-0633.08\2014_projects\CADD Files\Kotlowski sheet 2.dgn



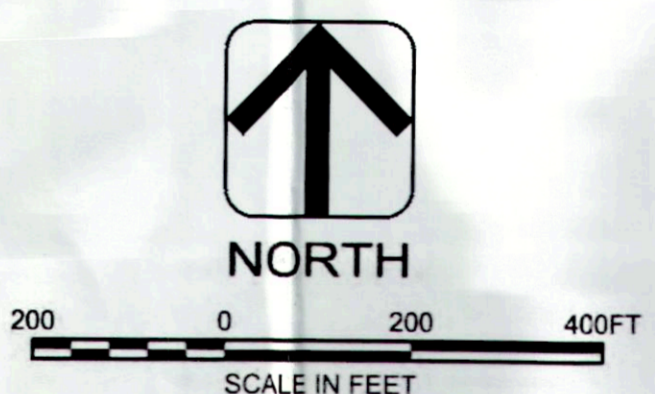
ACCESS EASEMENT DETAIL



COURSE TABLE

L1	N 82°12'34" E	147.32'
L2	N 54°59'56" E	118.62'
L3	N 41°58'08" E	109.65'
L4	N 10°42'52" E	112.62'
L5	N 07°47'03" W	135.59'
L6	S 78°09'42" E	146.64'
L7	S 47°43'46" E	108.66'
L8	S 00°27'33" E	192.37'

Point	Northing	Eastings	Latitude	Longitude
1	722202.66	1998023.81	43°58'53.08302"N	89°53'16.21103"W
2	722202.06	1997824.12	43°58'53.07974"N	89°53'18.94214"W
3	722479.98	1997843.77	43°58'55.82411"N	89°53'18.66831"W
4	722526.44	1997839.46	43°58'56.28299"N	89°53'18.72641"W
5	722522.13	1997471.32	43°58'56.24525"N	89°53'23.76150"W
6	722518.29	1997143.05	43°58'56.21159"N	89°53'28.25129"W
7	722891.48	1997141.34	43°58'59.89709"N	89°53'28.26802"W
8	722890.38	1996772.71	43°58'59.89094"N	89°53'33.29958"W
9	723273.14	1996773.07	43°59'03.67093"N	89°53'33.29817"W
10	723622.79	1996772.71	43°59'07.12395"N	89°53'33.29694"W
11	723624.24	1996986.41	43°59'07.13554"N	89°53'30.37401"W
12	723996.90	1996987.52	43°59'10.81577"N	89°53'30.35221"W
13	723982.77	1997268.01	43°59'10.67261"N	89°53'26.51597"W
14	724002.73	1997413.96	43°59'10.86783"N	89°53'24.51933"W
15	724070.77	1997511.12	43°59'11.53850"N	89°53'23.18917"W
16	724152.30	1997584.44	43°59'12.34270"N	89°53'22.18483"W
17	724262.95	1997605.38	43°59'13.43516"N	89°53'21.89640"W
18	724397.28	1997587.02	43°59'14.76199"N	89°53'22.14510"W
19	724639.01	1997527.33	43°59'17.15000"N	89°53'22.95717"W
20	724712.79	1997533.45	43°59'17.87855"N	89°53'22.87212"W
21	724682.71	1997676.96	43°59'17.57961"N	89°53'20.90970"W
22	724609.62	1997757.37	43°59'16.85674"N	89°53'19.81116"W
23	724417.27	1997758.91	43°59'14.95715"N	89°53'19.79361"W
24	724417.20	1997963.34	43°59'14.95376"N	89°53'16.99740"W
25	724095.42	1997962.23	43°59'11.77600"N	89°53'17.01849"W
26	724099.24	1998357.02	43°59'11.80846"N	89°53'11.61853"W
27	724102.16	1998655.80	43°59'11.83326"N	89°53'07.53179"W
28	723810.87	1998658.05	43°59'08.95657"N	89°53'07.50649"W
29	723522.33	1998660.27	43°59'06.10703"N	89°53'07.48155"W
30	723520.71	1998455.49	43°59'06.09380"N	89°53'10.28246"W
31	723517.31	1998024.98	43°59'06.06598"N	89°53'16.17084"W
32	723065.90	1998024.58	43°59'01.60804"N	89°53'16.18461"W
33	722671.82	1998024.23	43°58'57.71626"N	89°53'16.19665"W



The recorded description on the property of which the easement is located on is referenced in File No. X739405 by Chicago Title Insurance Company with an effective date of October 22, 2014.

LEGEND

FOUND IRON PIPE (IP (SIZE))	SECTION CORNER	FENCE
FOUND IRON BAR (IB (SIZE))		WATER'S EDGE
SET 3/4" x 24" CAPPED IRON REBAR WITH PLASTIC CAP STAMPED AYRES ASSOC RLS-2559		UNDERGROUND ELECTRIC
METAL POST WITH USDA/NRCS SIGNAGE		OVERHEAD ELECTRIC
SECTION LINE		POWER POLE
QUARTER LINE		TRANSFORMER
SIXTEENTH LINE		UNDERGROUND TELEPHONE
RIGHT OF WAY LINE		TELEPHONE POLE
PROPERTY LINE		TELEPHONE PEDESTAL
EXISTING EASEMENT		GAS UTILITY
RECORDED AS DATA (N90°00'00" E 123.87')		OVERHEAD UTILITY
PROPOSED ACCESS EASEMENT		LATTICE TOWER
USDA/NRCS BOUNDARY		SPOT ELEVATION

NRCS CONTRACT
No. 54-5F48-14-01GQS

SURVEY BY	JR. CS	BOOK NO	713
DR BY	JR	JOB NO	26-0633.08
CHK BY	CB	DATE	FEBRUARY 18, 2015
NO	DATE	REVISION	

US DEPARTMENT OF AGRICULTURE
SCOTT E. KOTLOWSKI PROPERTY
ADAMS COUNTY, WISCONSIN



MAP OF BOUNDARY SURVEY
OF USDA-NRCS ACEP
WETLAND RESERVE EASEMENT

SHEET NO.
2 OF 3