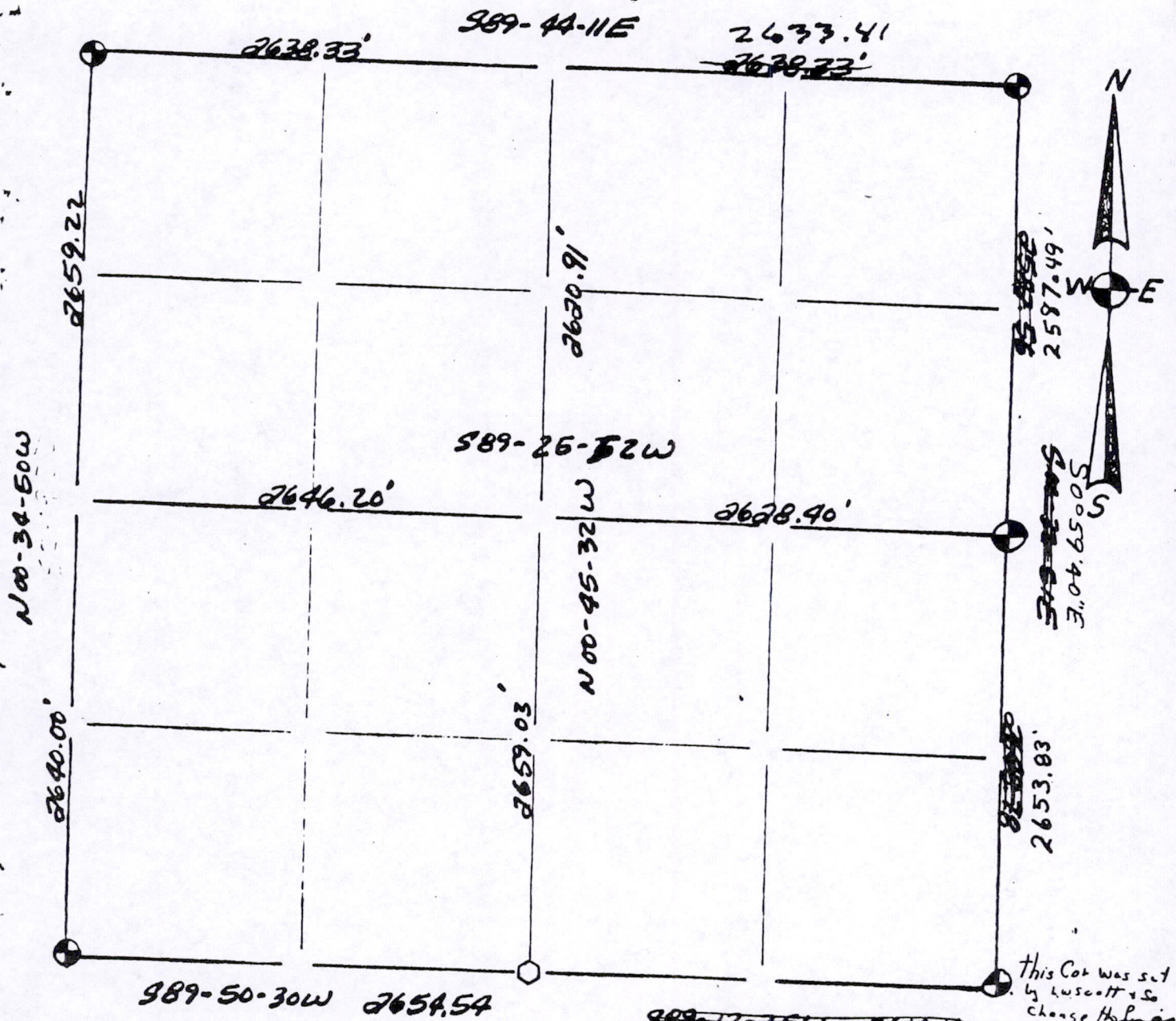


Section Summary and Index

Section 1 - Town 18 - Range 5



This Cot was set by LUSCOTT & SO change Holman's as indicated 2/27/81

~~989-44-11E 2638.33'~~
S89°26'01"W 2654.54

LEGEND

- ⊕ - Harrison cast iron monument.
- - Stone or concrete monument.
- - Other
- R.R. SPINE

Kiedrowski Engineering, Inc.
4340 80th Street South (Kellnor)
Wisconsin Rapids, WI 54494

Jan. 1980
Revised 2/27/81

Sec 0118050000

2035.957.32
9/29/80