

ADAMS COUNTY

Survey Monument Record

TYPE OF MONUMENT: 1 1/4" x 30" IRON BAR

STATE PLANE COORDINATES: N _____

E _____

ELEVATION — M.S.L. DATUM: _____

THETA ANGLE: _____

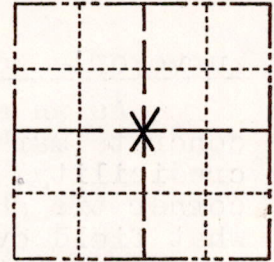
FIELD BOOK: _____ PAGE _____

CORNER NO. _____

SECTION 2

TOWN 18N

RANGE 6E



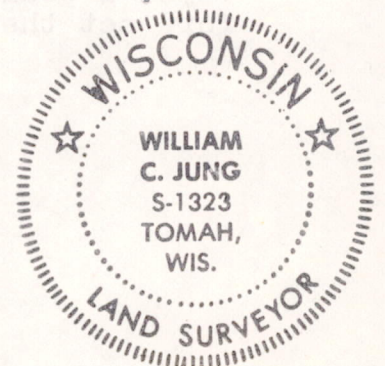
LOCATION
(Indicated by 'X')

BASIS FOR MONUMENT LOCATION

(Use reverse side if necessary)

Show info such as: History of corner, with reference to Vol. and pg, dates, surveyor; exact description of monument replaced; if location computed, by taped or EDM traverse; landowner remarks, etc.

SEAL:



Set a 1 1/4"x30" iron bar at the true Center 1/4 corner of Section 2, this being the intersection of the 1/4 lines. Found a concrete monument like those shown on the corner tie sheet for the N1/4 of this section. I did not find any other monuments of this type in Section 2. Because of the existing Harrison monuments already in Section 2, I could not fit this existing marker without bending the 1/4 lines, so I set the iron bar at the true corner. The origin of the concrete marker is unknown. No other surveys are "tied" to the concrete marker other than one done by this office in 1966. This survey has since been revised and corrected, and is now "tied" to the iron bar. (OVER!)

CERTIFIED CORRECT:

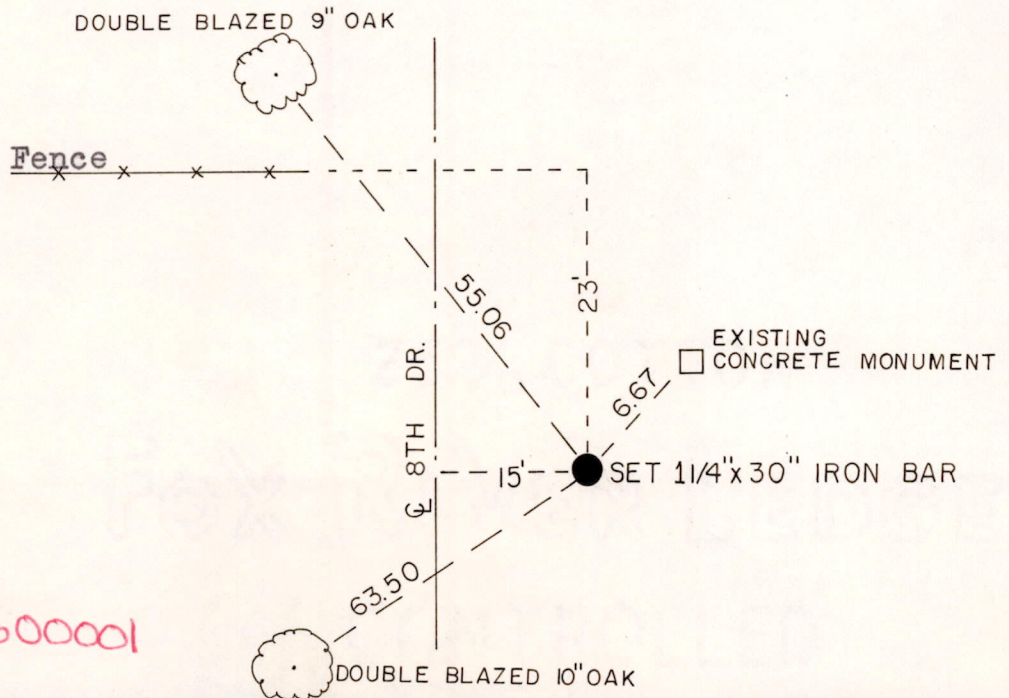
William C. Jung

Registered Land Surveyor

DATE: September 29, 1977

TIE SKETCH

(Show at least four ties)



MISO 2180600001

Surveyor's Note:

As an additional note on the [redacted] concrete marker found, I can't help but question its credibility. After reviewing Sime's notes of 1966, the corner tie sheets in the County Surveyor's Office, and what field evidence I found in Section 2, it appears that whoever set this marker at the C1/4 Corner set little else throughout the section except at the N1/4 Corner. My general impression is that it might have been part of a "half survey". I couldn't help but doubt its accuracy, and therefore set the true corner.

w.e.g.