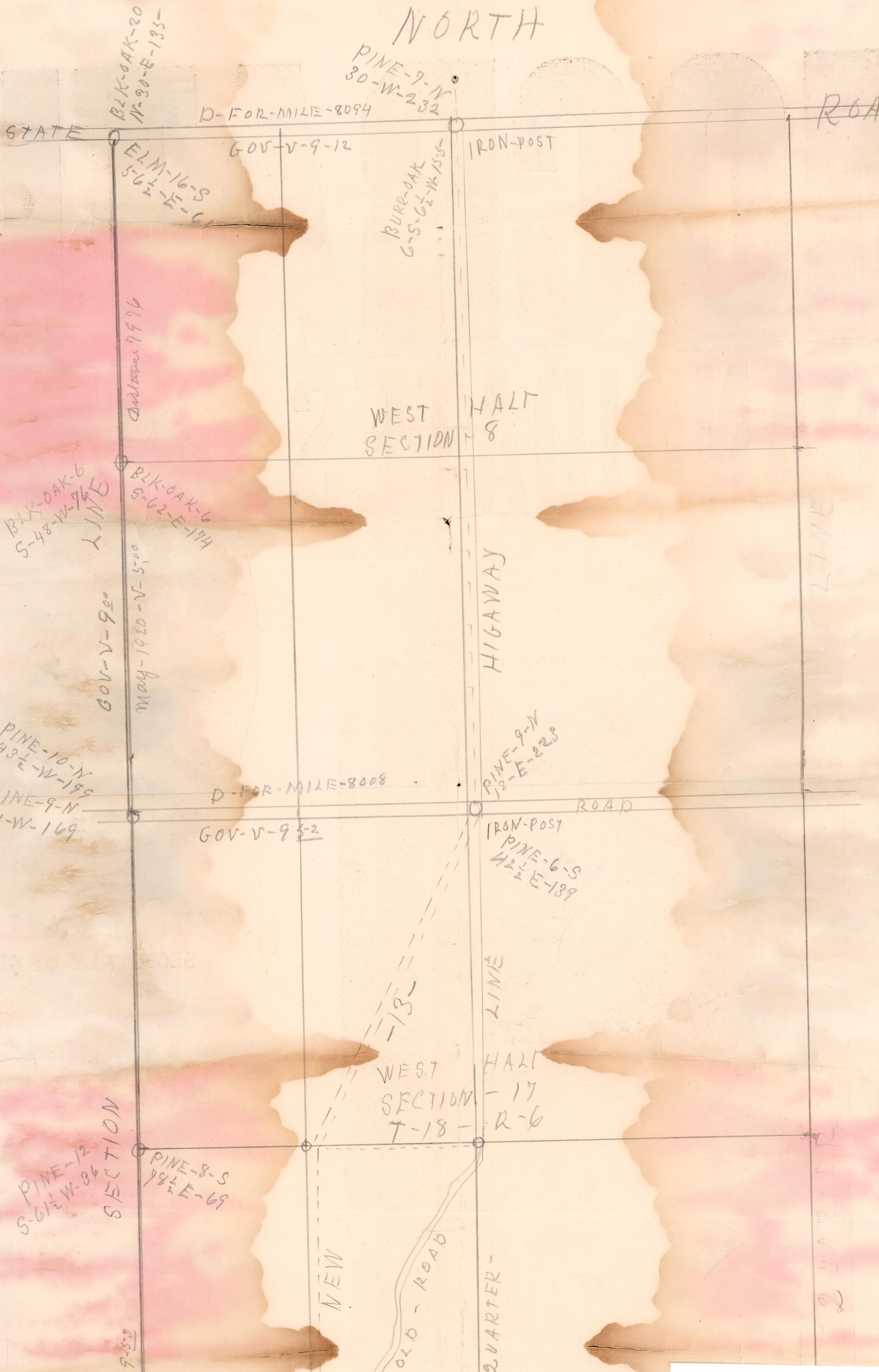


NORTH



BLK-OAK-20  
N-30-E-135-

PINE-7-N  
30-W-232

D-FOR-MILE-8094

STATE

ELM-16-S  
56 1/2 E-61

GOV-V-9-12

IRON-POST

BURR-OAK  
6-S-6 1/2 W-155-

DISTANCE 7976

WEST SECTION - 8  
HALF - 8

BLK-OAK-6  
S-48-W-76  
LINE

BLK-OAK-6  
S-62-E-174

GOV-V-9-20

MAY-1920-V-500

HIGAWAY

PINE-10-N  
43 1/2 W-199  
PINE-9-N  
61-W-169

D-FOR-MILE-8008

GOV-V-9-2

PINE-9-N  
18-E-223

ROAD

IRON-POST  
PINE-6-S  
42 1/2 E-189

SECTION

PINE-12  
S-6 1/2 W-36

PINE-8-S  
78 1/2 E-69

WEST SECTION - 17  
HALF - R-6  
T-18

NEW

OLD ROAD

QUARTER -

LINE

QUARTER

9-3-2