

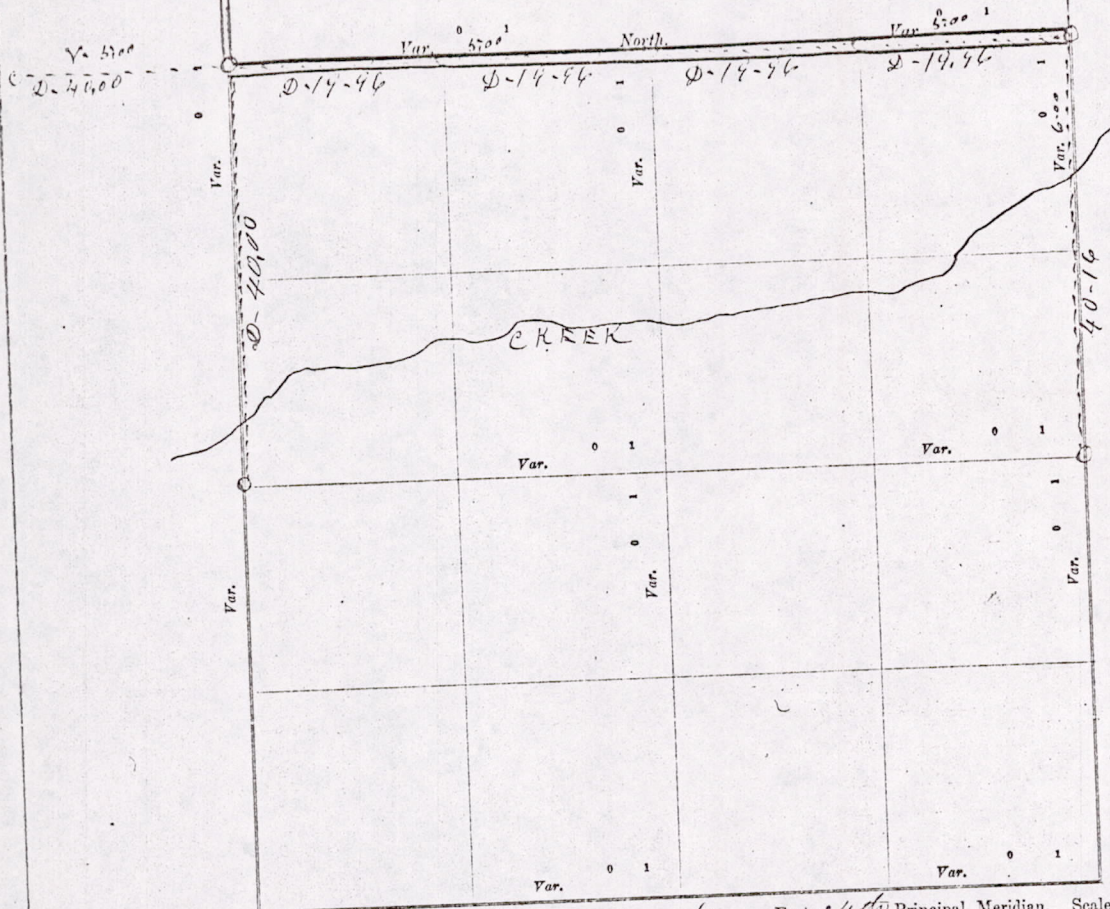
CERTIFICATE OF SURVEY.

STATE OF WISCONSIN,
ADAMS COUNTY

ss. J. M. de Smith Surveyor, in and for the County and State aforesaid, do

hereby certify that I have surveyed and subdivided Section 13 Township 18 North of Range 6 East of 11 1/2 Principal Meridian, as represented by the courses and distances on the following plat, and annexed field-notes of survey:

Established the center of the section at the point of intersection of straight quarter lines.
Established all quarter-quarter corners upon the section boundary at proportional distances between known section and quarter section corners, according to the original field-notes of the Government survey.
Established all lost corners at proportionate distances between known corners, according to original field-notes of the Government survey:



Plat of Section 13, Township 18 North, Range 6 East of 11 1/2 Principal Meridian. Scale, 80 chains to 6 inches. The figures in red ink are the lengths of the lines as stated in the field-notes of the Government survey.

Declination of the Magnetic Meridian from the True Meridian _____ East.

Surveyed and subdivided 7-88 Day of November A. D. 1912, in accordance with the State Laws and Instructions of the Commissioner of the General Land Office, and recorded on pages _____ of Register in the County Surveyor's office.

WITNESS my hand this 8th day of November A. D. 1912.

J. M. de Smith County Surveyor.

The above work was done at the request of the Town Board of the Town of Preston. Victoria Poun & Gardiner Town Board in surveying Highway between Sections 12 & 13 & 11 and 12

No.	DESCR	Town	N. B. The
1	N. W.		
2	N. E.		
3	N. E.		
4	S. W.		
5	N. E.		
6	E. C.		
7	N. W.		
8	W. C.		
No. SUE			
1	Co		
2	No		
3	Es		
4	So		
5	W		
6	Co		
7	N		
8	E		
9	S		
10	C		
11	N		
12	S		
13	Y		
14	C		
15	S		
16	Y		
17	*		

*Joe
Mrs*

The at
at the
Highway
shooting
ran to
from
to do
on ea
distan
then
then
and
me
at q

MIS1318060001

DESCRIPTION of Section, Quarter Section and Quarter quarter Section Corners of Section

Township _____ North, Range _____ East of _____ Principal Meridian.

N. B. - The variation of needle adopted in establishing corners is _____

No.	Government Corners.	Bearing Truss.	In. dia.	Course they bear.	Links Distant.	Bearing Truss.	In. dia.	Course they bear.	Links Distant.
1	N. W. Sec. cor. Identified	New Pine	8	S. 52 1/2 E.	136 1/2				
2	N. E. Sec. cor. Identified								
3	N. E. Sec. cor. Identified	New Pine	10	S. 27 1/2 W.	411				
4	S. W. Sec. cor. Identified								
5	N. 1/4 Sec. cor. Identified								
6	E. 1/4 Sec. cor. Identified								
7	N. 1/4 Sec. cor. Identified	New Pine	14	S. 57 W.	160				
8	W. 1/4 Sec. cor. Identified	see 12 - New Pine	12	N. 32 W.	23 1/2				
No. SUBDIVISION CORNERS.									
1	Center 1/4 Sec. cor.								
2	North 1/4 - 1/4 S. N. W. qr.								
3	East 1/4 - 1/4 S. N. W. qr.								
4	South 1/4 - 1/4 S. N. W. qr.								
5	West 1/4 - 1/4 S. N. W. qr.								
6	Center 1/4 - 1/4 S. N. W. qr.								
7	North 1/4 - 1/4 S. N. E. qr.								
8	East 1/4 - 1/4 S. N. E. qr.								
9	South 1/4 - 1/4 S. N. E. qr.								
10	Center 1/4 - 1/4 S. N. E. qr.								
11	East 1/4 - 1/4 S. E. qr.								
12	South 1/4 - 1/4 S. E. qr.								
13	West 1/4 - 1/4 S. E. qr.								
14	Center 1/4 - 1/4 S. E. qr.								
15	South 1/4 - 1/4 S. W. qr.								
16	West 1/4 - 1/4 S. W. qr.								
17	Center 1/4 - 1/4 S. W. qr.								

NAMES OF SWORN ASSISTANTS.

CHAINMEN.	FLAGMEN.	AXMEN.
Joe Victoria Mrs Ebert		

MINUTES.

The above work was done to establish the section corner at the corner of sections 11-12-13-14 2-19-R-6-E, and to survey a Highway on the section line between section 12 & 13, starting at the identified 1/4 Post on the North side of section 14 and ran East 40 chains to the established section corner, likewise from the 1/4 Post on the west side of section 13, 40 chains North to said corner. Then from the 1/4 Post on Town line South on East side of section 12 - 40 chains & 16 links and same distance from the 1/4 Post on the East side of section 13, and then established the corner on the Town line made one Bearing then went on section line between sections 12 & 13, 77 chains and 85 links to the established ^{N.W.} corner of section 13, made one Bearing at section corner & quarter Post, also one Bearing at quarter Post between sections 11 & 12.

W. L. Smith County Surveyor

MIS 13180600001