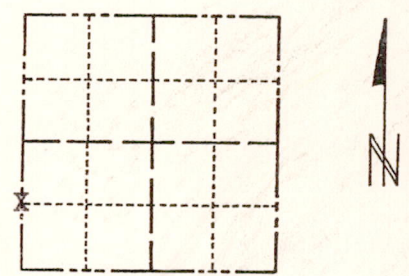


ADAMS COUNTY

Survey Monument Record

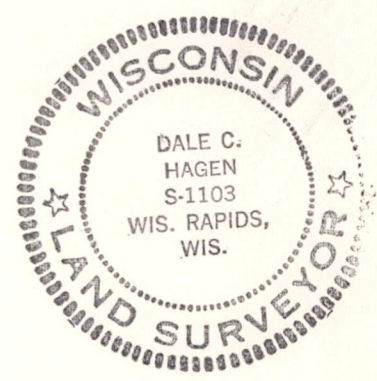
TYPE OF MONUMENT: 1" x 24" Iron Pipe  
STATE PLANE COORDINATES: N \_\_\_\_\_  
E \_\_\_\_\_  
ELEVATION — M.S.L. DATUM: \_\_\_\_\_  
THETA ANGLE: \_\_\_\_\_  
FIELD BOOK: 111 PAGE 10

CORNER NO. 372  
SECTION 15  
TOWN 18 N  
RANGE 6 E



LOCATION  
(Indicated by 'X')

SEAL:



BASIS FOR MONUMENT LOCATION

(Use reverse side if necessary)

Show info such as: History of corner, with reference to Vol. and pg, dates, surveyor; exact description of monument replaced; if location computed, by taped or EDM traverse; landowner remarks, etc.

Excavation with backhoe yielded 2" by 6" by 10" sandstone opposite 17" Jack Pine bearing tree marked "S 22" and "BT".  
Replaced with 1" by 24" iron pipe.  
Original stone set by M.C. Smith, County Surveyor, in 1911.

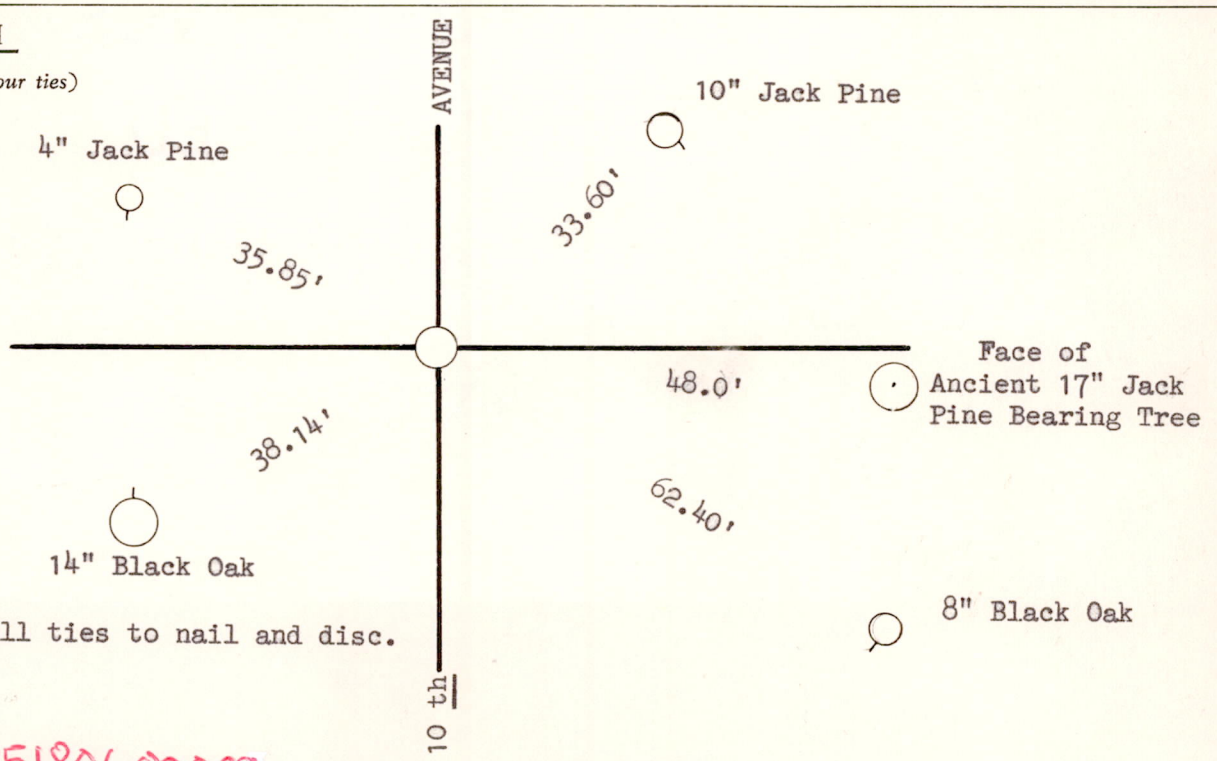
CERTIFIED CORRECT:

Dale C. Hagen  
Registered Land Surveyor

DATE: April 20, 1974

TIE SKETCH

(Show at least four ties)



Note: All ties to nail and disc.

M1515180600002