

Town Preston

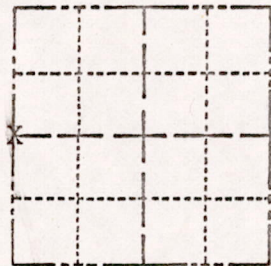
374

ADAMS COUNTY

Survey Monument Record

CORNER NO. SECTION 16 TOWN 18 N RANGE 6 E

TYPE OF MONUMENT: STANDARD HARRISON STATE PLANE COORDINATES: N E ELEVATION — M.S.L. DATUM: THETA ANGLE: FIELD BOOK: 111 PAGE 11



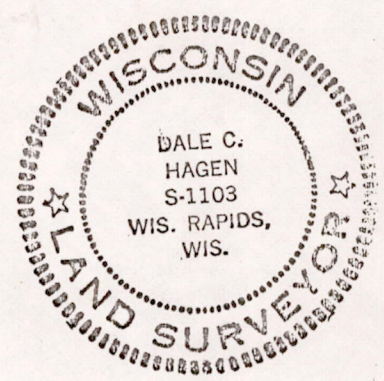
LOCATION (Indicated by 'X')

BASIS FOR MONUMENT LOCATION

(Use reverse side if necessary)

Show info such as: History of corner, with reference to Vol. and pg, dates, surveyor; exact description of monument replaced; if location computed, by taped or EDM traverse; landowner remarks, etc.

SEAL:



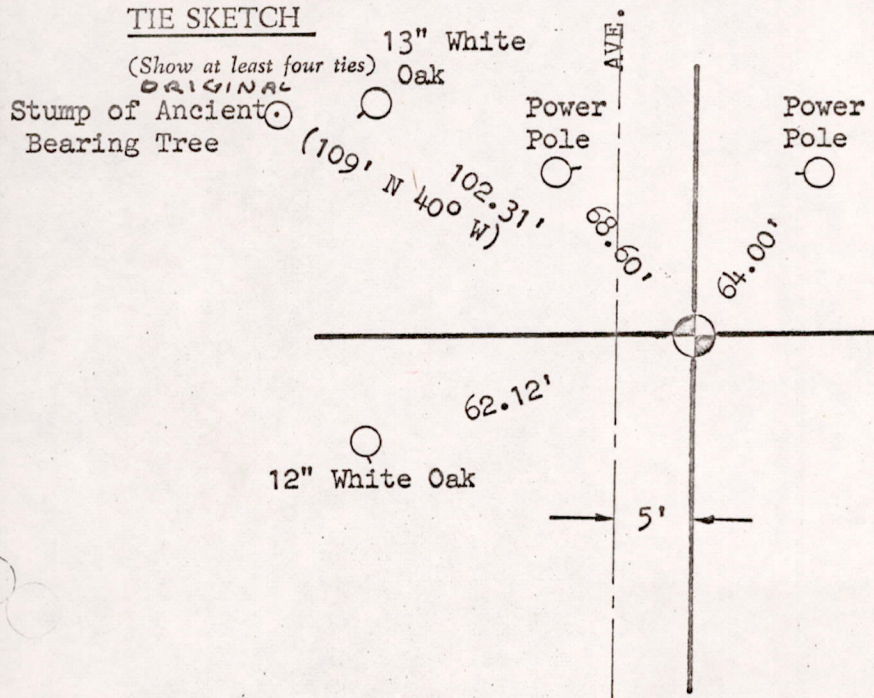
Excavation with backhoe yielded 1/2 inch by 24 inch iron pipe along side of machinery bracket weighting approximately 5 pounds. This location was indicated to be the correct location of the Quarter corner by Edward Viktora, age approx. 75, a lifelong resident of the nearby farm. He indicated that his father had replaced the stone that had been at this location. He also pointed out the location of the original rotting bearing tree stump with the writing still legible.

CERTIFIED CORRECT:

Dale C. Hagen Registered Land Surveyor

DATE: April 20, 1974

TIE SKETCH



NOTE: All ties to nail and disc.

MIS 1618060000L 1th