

CERTIFICATE OF SURVEY.

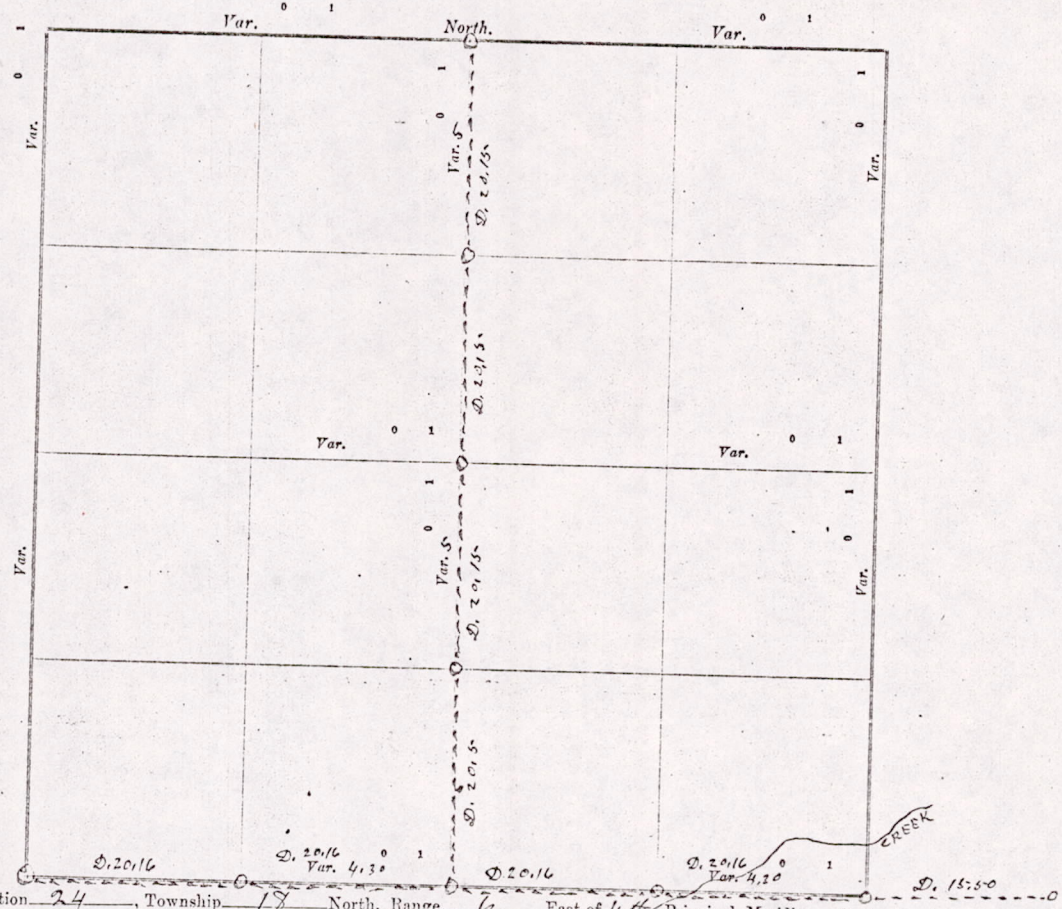
STATE OF WISCONSIN,
ADAMS COUNTY.

ss. Wm. C. Smith

Surveyor, in and for the County and State aforesaid, do

hereby certify that I have surveyed and subdivided Section 24 Township 17 North of Range 6 East of 4th Principal Meridian, as represented by the courses and distances on the following plat, and annexed field-notes of survey:

Established all quarter-quarter corners upon the section boundary at proportional distances between known section and quarter section corners, according to the original field-notes of the Government survey.
Established all lost corners at proportionate distances between known corners, according to original field-notes of the Government survey:



Plat of Section 24, Township 17 North, Range 6 East of 4th Principal Meridian. Scale, 80 chains to 6 inches. The figures in red ink are the lengths of the lines as stated in the field-notes of the Government survey.

Declination of the Magnetic Meridian from the True Meridian _____ East.

Surveyed and subdivided 28 Day of May A. D. 1912, in accordance with the State Laws and Instructions of the Commissioner of the General Land Office, and recorded on pages _____ of Register in the County Surveyor's office.

WITNESS my hand this 28 day of May A. D. 1912.

Wm. C. Smith County Surveyor.

The above work was done for and at the request of Wm Reddick Gonzogoskey & others,

Blanch T. John

*Starting
and Run
Richfield,
and 50
But in
20 chains
and Run
& 60
at the corner*

M1524180600001