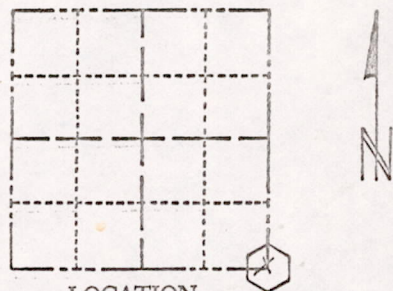


Survey Monument Record

TYPE OF MONUMENT: 30" HARRISON
 STATE PLANE COORDINATES: N _____
 E _____
 ELEVATION — M.S.L. DATUM: _____
 THETA ANGLE: _____
 FIELD BOOK: 103 PAGE 140

SECTION 32
 TOWN 18
 RANGE 6



LOCATION
(Indicated by 'X')

SEAL:

BASIS FOR MONUMENT LOCATION

(Use reverse side if necessary)

Show info such as: History of corner, with reference to Vol. and pg, dates, surveyor; exact description of monument replaced; if location computed, by taped or EDM traverse; landowner remarks, etc.

Found 2" capped iron pipe- set 30" Harrison monument on June 20, 1972.

by Anthony B. Kiedrowski R.L.S. 878

Pipe found bent over.

Top section broken off 10-11-75 SS

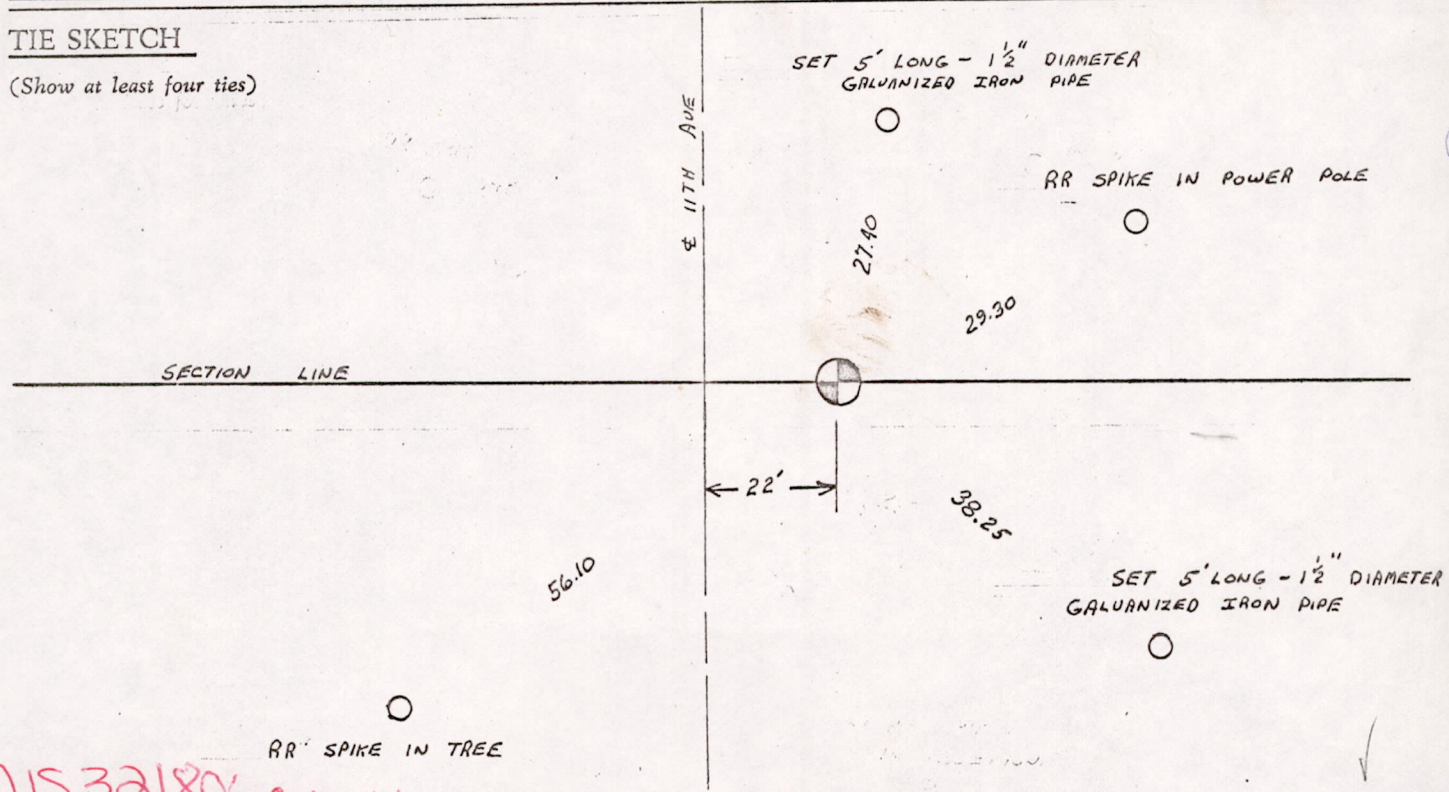


CERTIFIED CORRECT:

Anthony B. Kiedrowski
 Registered Land Surveyor
 DATE: 1-10-73

TIE SKETCH

(Show at least four ties)



MIS 32180600001