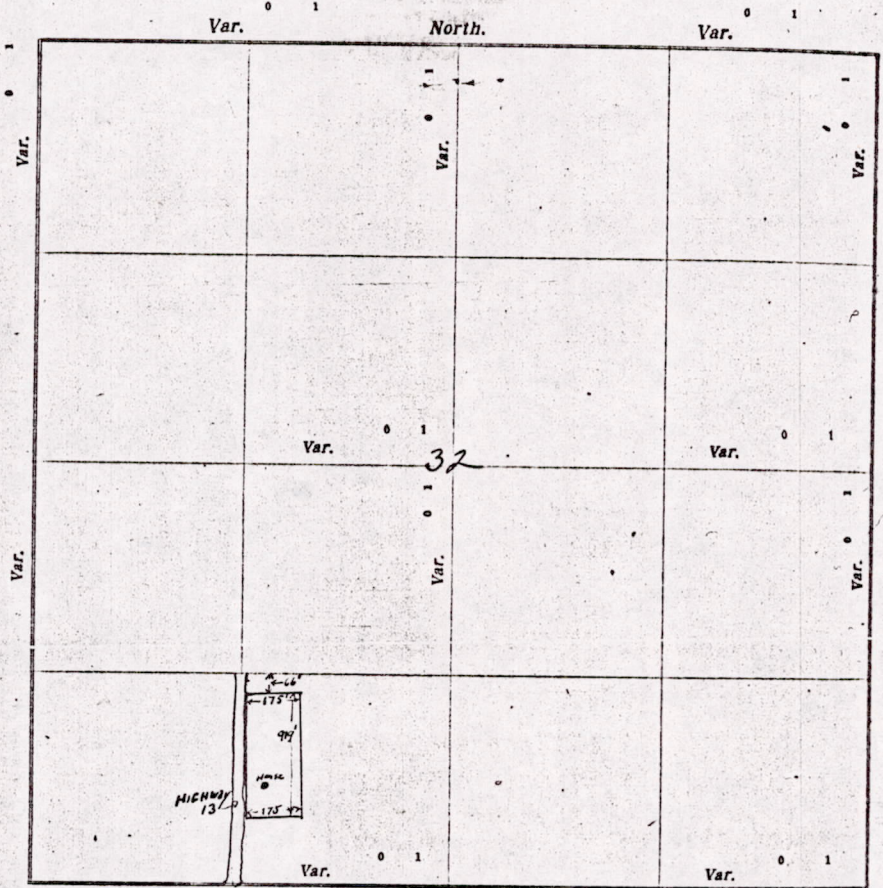


CERTIFICATE OF SURVEY.

STATE OF WISCONSIN, } ss. Frank E. Novak Surveyor, in and for the County and State of Wisconsin,
 ADAMS COUNTY. }
 hereby certify that I have surveyed and subdivided Section 32 Township 18 North of Range 6 East of 4 Principal Meridian, as represented by the courses and distances on the following plat, and annexed field-notes of survey:
 Established the center of the section at the point of intersection of straight quarter lines.
 Established all quarter-quarter corners upon the section boundary at proportional distances between known section and quarter section corners, according to the original field-notes of the Government survey.
 Established all lost corners at proportionate distances between known corners, according to original field-notes of the Government survey.



Plat of Section 32, Township 18 North, Range 6 East of 4 Principal Meridian. Scale, 80 chains to 4 inches. The figures in red ink are the lengths of the lines as stated in the field-notes of the Government survey.
 Declination of the Magnetic Meridian from the True Meridian _____ East.
 Surveyed and subdivided Oct 19 A. D. 1933, in accordance with the State Laws and Instructions of the Commissioner of the General Land Office, and recorded on pages _____ of Register in the County Surveyor's office.
 WITNESS my hand this 19 day of Oct A. D. 1933
Frank E. Novak Surveyor.

The above survey was made at request of Mr. Triska. It sets off 3.69 acres of the SE 1/4 of 34 above.

M 5321806 00004

DESCRIPTION of Section, Quarter Section and Quarter-quarter Section Corners of Section

Township _____ North, Range _____ East of _____ Principal Meridian.

150

N. B.—The variation of needle adopted in establishing corners is _____

and State aforesaid, do
East of _____

and quarter section
Government survey:

Var.

Var.

Government Corners	Bearing Trees	In. dia.	Courses they bear	Links Distant	Bearing Trees	In. dia.	Courses they bear	Links Distant
No. 1 N. W. Sec. cor. Identified								
2 N. E. Sec. cor. Identified								
3 S. E. Sec. cor. Identified								
4 S. W. Sec. cor. Identified								
5 N. 1/4 Sec. cor. Identified								
6 E. 1/4 Sec. cor. Identified								
7 S. 1/4 Sec. cor. Identified								
8 W. 1/4 Sec. cor. Identified								
Subdivision Corners.								
1 Center 1/4 Sec. cor.								
2 North 1/4-1/4s N. W. qr.								
3 East 1/4-1/4s N. W. qr.								
4 South 1/4-1/4s N. W. qr.								
5 West 1/4-1/4s N. W. qr.								
6 Center 1/4-1/4s N. W. qr.								
7 North 1/4-1/4s N. E. qr.								
8 East 1/4-1/4s N. E. qr.								
9 South 1/4-1/4s N. E. qr.								
10 Center 1/4-1/4s N. E. qr.								
11 East 1/4-1/4s S. E. qr.								
12 South 1/4-1/4s S. E. qr.								
13 West 1/4-1/4s S. E. qr.								
14 Center 1/4-1/4s S. E. qr.								
15 South 1/4-1/4s S. W. qr.								
16 West 1/4-1/4s S. W. qr.								
17 Center 1/4-1/4s S. W. qr.								

NAMES OF SWORN ASSISTANTS.

CHAINMEN	FLAGMEN	AXMEN
<i>Triska</i> <i>Skalichy</i>	<i>Skalichy</i>	

Scale, 80 chains to 6

and Instructions of
office.

Surveyor.

7 5/8 1/4

MINUTES.

Beginning on West side of Highway 13 a line was run due East 175 ft. a stone was laid for S.W. corner of lot. (W.T. Pine 8" W 58° E 28 ft.) The S.E. corner was established by a post (witness tree - 6" N 30° W 37.5'). The East side was run parallel to Highway. Stakes were set at convenient intervals and continued 919 feet. Thence N.E. corner was established by a stone (W.T. Pine 15" 58° E 15') N.W. corner established by a stone (W.T. Pine 8" N 40° W 39.5-3 and tree 3" 3" 4" diam - N 34° W 18 ft.) The rectangle is 3.69 acres

Frank E. Novak
County Surveyor.

M1532180600004