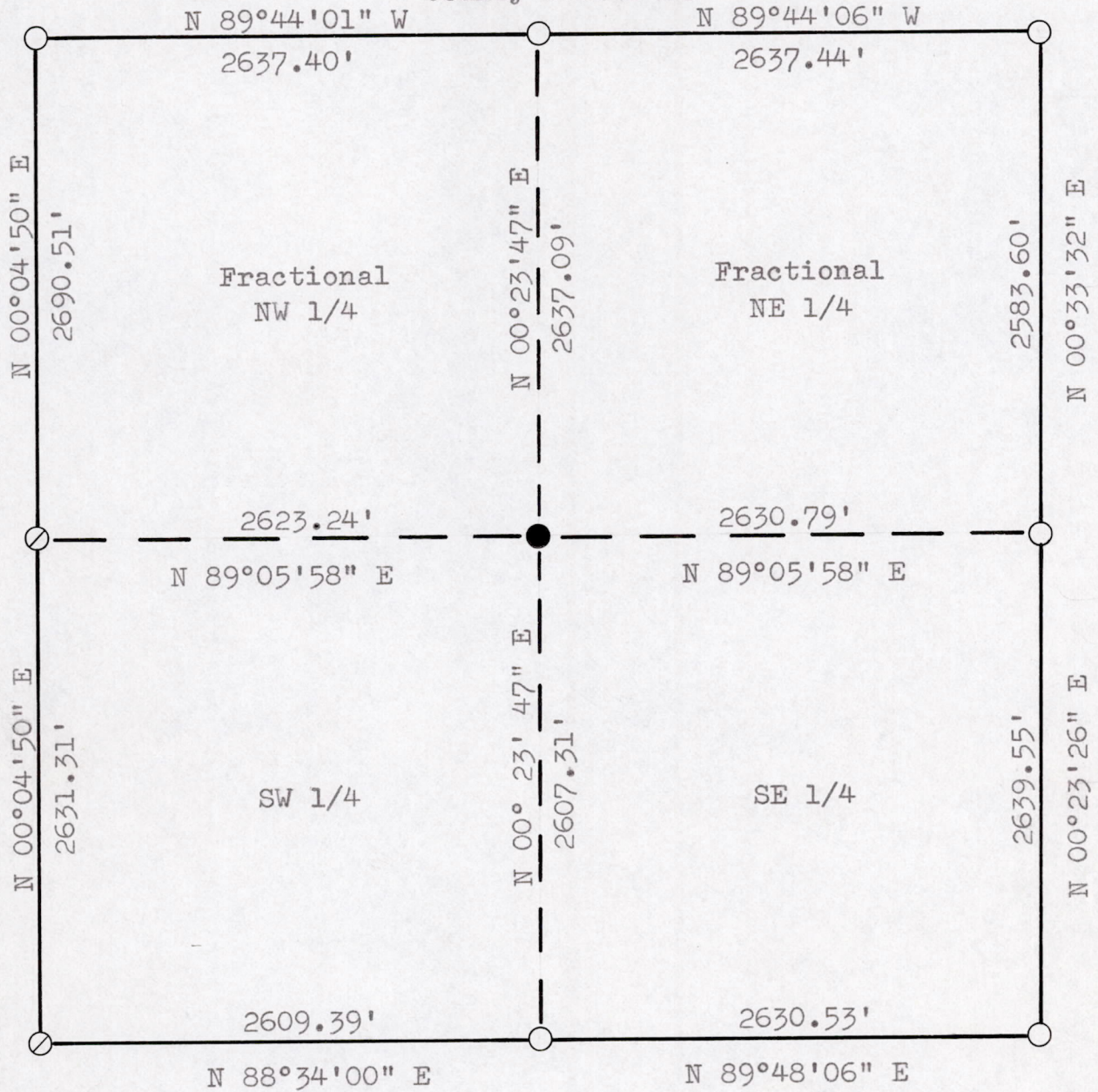
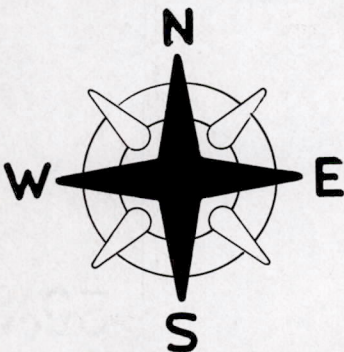


Section 2-T18N-R6E, Town of Preston, Adams
County Wisconsin



ASSUMED NORTH

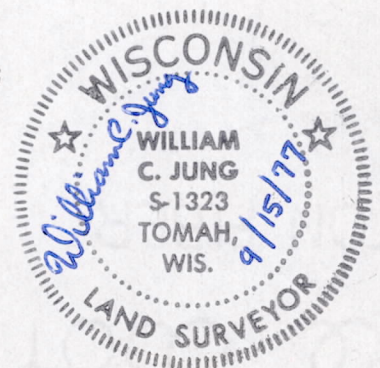


- ⊗ = Set Harrison Monument
- = Set 1 1/4" x 30" iron bar
- = Existing Harrison monument

(NO SCALE)

September 15, 1977

Sec 02180600001



(This data is to be filed with the Adams County Surveyor's Office.)