

WAUSHARA COUNTY
 CERTIFIED LAND CORNER

I, Gary E. Schilder, do hereby certify that on the 15th day of Oct 19 81, I found (evidence) (no evidence) of the W114 corner of Sec 6, T 18 N, R 8 E, Fourth Principal Meridian, and I re-established said corner according to the Wisconsin Statutes as shown and described hereon.

Dated this 15th day of Oct 19 81

Gary E. Schilder
 Waushara County Surveyor

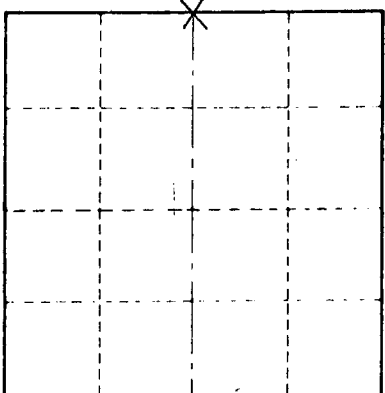
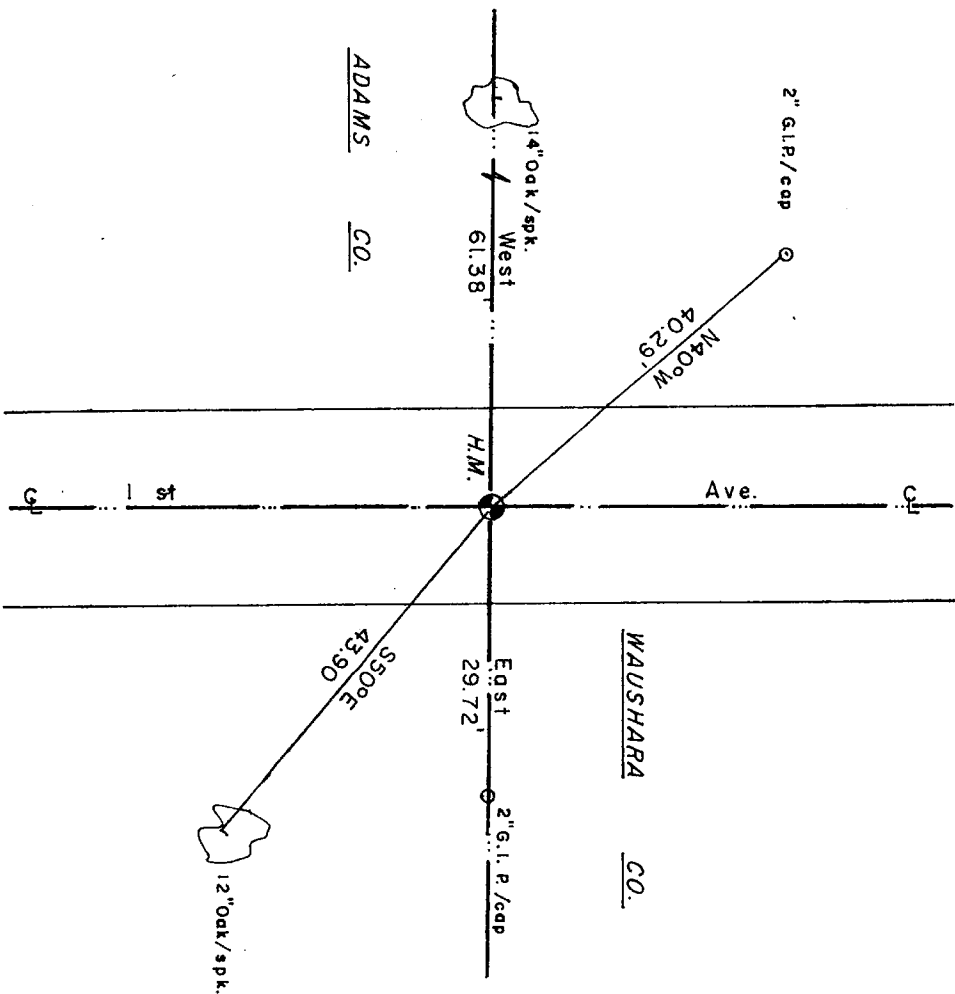
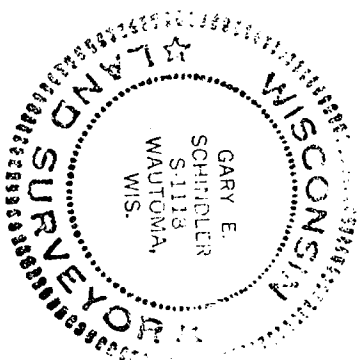
EXISTING SPIKE FIT GOVERNMENT DISTANCES WELL

Description of corner evidence found: spike

Witnesses to corner location:

Patrick G. Krier

Steven J. Wack



X = LOCATION CORNER

T 18 N R 8 E

WISCONSIN

SURVEY CONTROL ORDER

Horizontal	
Vertical	

WISCONSIN COORDINATE SYSTEM

Corner	East (X)	North (Y)	Elevation (Z)	Zone
Control Sta. Name				

Approved By:

File: 1-18-7

MIS01180700001