

CERTIFICATE OF SURVEY.

STATE OF WISCONSIN,
ADAMS COUNTY.

M. L. Smith

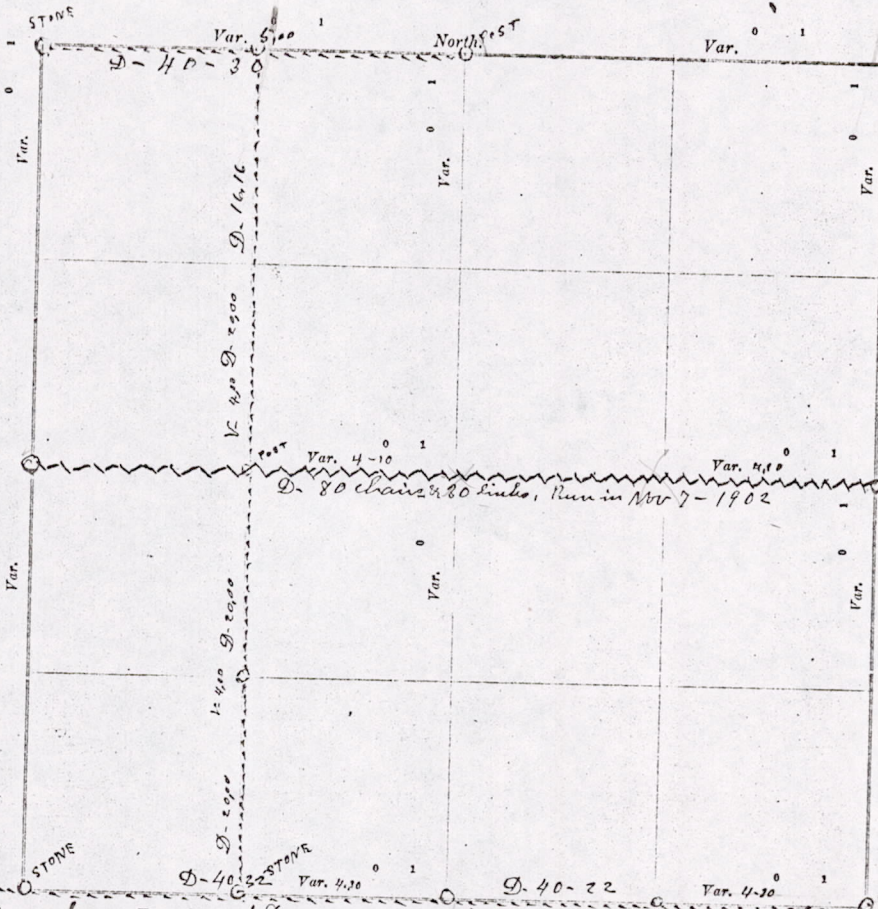
Surveyor, in and for the County and State aforesaid, do

herby certify that I have surveyed and subdivided Section 1 Township 18 North of Range 7 East of 4th Principal Meridian, as represented by the courses and distances on the following plat, and annexed field-notes of survey:

Established the center of the section at the point of intersection of *straight* quarter lines.

Established all quarter-quarter corners upon the section boundary at proportional distances between known section and quarter section corners, according to the original field-notes of the Government survey.

Established all lost corners at proportionate distances between known corners, according to original field-notes of the Government survey:



Plat of Section 1, Township 18 North, Range 7 East of 4th Principal Meridian. Scale, 80 chains to 8 inches. The figures in red ink are the lengths of the lines as stated in the field-notes of the Government survey.

Declination of the Magnetic Meridian from the True Meridian _____ East.

Surveyed and subdivided Dec 3rd A. D. 1912, in accordance with the State Laws and Instructions of the Commissioner of the General Land Office, and recorded on pages _____ of Register in the County Surveyor's office.

WITNESS my hand this 3rd day of December A. D. 1912.

M. L. Smith County Surveyor.

The above work was at the request of *Wm McLaughlin* to get the correct 8th line, North & South in the west half of section one

No.	DESC	Total
1	N. 1	
2	N. 1	
3	S. 1	
4	S. 1	
5	N. 1	
6	N. 1	
7	S. 1	
8	W. 1	
No. SUBD		
1	Cent	
2	West	
3	East	
4	South	
5	West	
6	Cent	
7	North	
8	East	
9	South	
10	Cent	
11	East	
12	South	
13	West	
14	Cent	
15	South	
16	West	
17	Cent	

J. Thorne
Frank

Starting a line with 400 D.V. 1/2 bearings, corner of established NW corner quarter section and also to line North West on the Nov 7-1902. Wm Mc

MIS01180700003

DESCRIPTION of Section, Quarter Section and Quarter quarter Section Corners of Section
 Township _____ North, Range _____ East of _____ Principal Meridian.

N. B.—The variation of needle adopted in establishing corners is _____

ate aforesaid, do
 st of *4th*

quarter section
 ment survey:

No.	Government Corners.	Bearing Trees.	In. dia.	Courses they bear.	Links Distant.	Bearing Trees.	In. dia.	Courses they bear.	Links Distant.
1	N. W. Sec. cor. Identified								
2	N. E. Sec. cor. Identified								
3	S. E. Sec. cor. Identified	<i>New</i>	<i>Blk oak</i>	<i>14 N-68-W</i>	<i>103</i>				
4	S. W. Sec. cor. Identified	<i>New</i>	<i>Blk oak</i>	<i>14 N-44-W</i>	<i>85</i>				
5	N. 1/4 Sec. cor. Identified								
6	E. 1/4 Sec. cor. Identified								
7	S. 1/4 Sec. cor. Identified								
8	W. 1/4 Sec. cor. Identified								
No. SUBDIVISION CORNERS.									
1	Center 1/4 Sec. cor.								
2	North 1/4-1/4s N. W. qr.								
3	East 1/4-1/4s N. W. qr.								
4	South 1/4-1/4s N. W. qr.								
5	West 1/4-1/4s N. W. qr.								
6	Center 1/4-1/4s N. W. qr.								
7	North 1/4-1/4s N. E. qr.								
8	East 1/4-1/4s N. E. qr.								
9	South 1/4-1/4s N. E. qr.								
10	Center 1/4-1/4s N. E. qr.								
11	East 1/4-1/4s S. E. qr.								
12	South 1/4-1/4s S. E. qr.								
13	West 1/4-1/4s S. E. qr.								
14	Center 1/4-1/4s S. E. qr.								
15	South 1/4-1/4s S. W. qr.								
16	West 1/4-1/4s S. W. qr.								
17	Center 1/4-1/4s S. W. qr.								

NAMES OF SWORN ASSISTANTS.

CHAINMEN.	FLAGMEN.	AXMEN.
<i>I Thompson</i> <i>Frank Beach</i>		

STONE
 80 chains to 6

Instructions of
 ce.
 Surveyor.

line
 half of

MINUTES.

Starting at the stone at the S.E. corner of section 1 T-18-R-7-E. on the county line (which stone was set by Surveyor M. C. Lathrop) and ran west at 43° D-V 40 chains & 22 links to quarter Post could find no Post or Bearings, set Post. Then west same V 40 chains & 22 links to the southwest corner of the section, no Post or Bearings, went to Stone at quarter Post west of said corner & ran east at 5-D-V 40 chains & 62 links and established section corner, set Stone & made one Bearing. Then went to the N.W. corner of the section & ran east at 5-D-V 40 chains & 30 links to the quarter Post on the north side of the section. Established 8th Post at 20-15 and also the 8th Post on the south side of the section at 20-11. Then ran North at 14-D-V on the 8th line 76 chains and 16 links to the 8th Post on the north side of the section. The to & W quarter line I ran in Nov 7-1902, said 8th ^{line} was run & established to get the East side of Mr Mc Laughlins land.

M. C. Smith County Surveyor

MISO1180200003