

ADAMS COUNTY

Survey Monument Record

TYPE OF MONUMENT: Harrison std.

STATE PLANE COORDINATES: N _____
E _____

ELEVATION — M.S.L. DATUM: _____

THETA ANGLE: _____

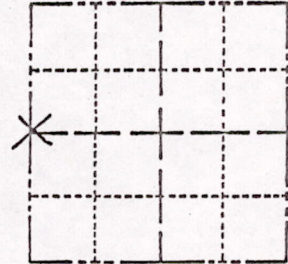
FIELD BOOK: 108 PAGE 17

CORNER NO. _____

SECTION 2

TOWN 18

RANGE 7



LOCATION
(Indicated by 'X')

SEAL:

BASIS FOR MONUMENT LOCATION

(Use reverse side if necessary)

Show info such as: History of corner, with reference to Vol. and pg, dates, surveyor; exact description of monument replaced; if location computed, by taped or EDM traverse; landowner remarks, etc.

Set at proportionate distances between section corners as compared with original notes.
No excavation because of fill in road.

*3-21-77
6 P-55
O.K.*



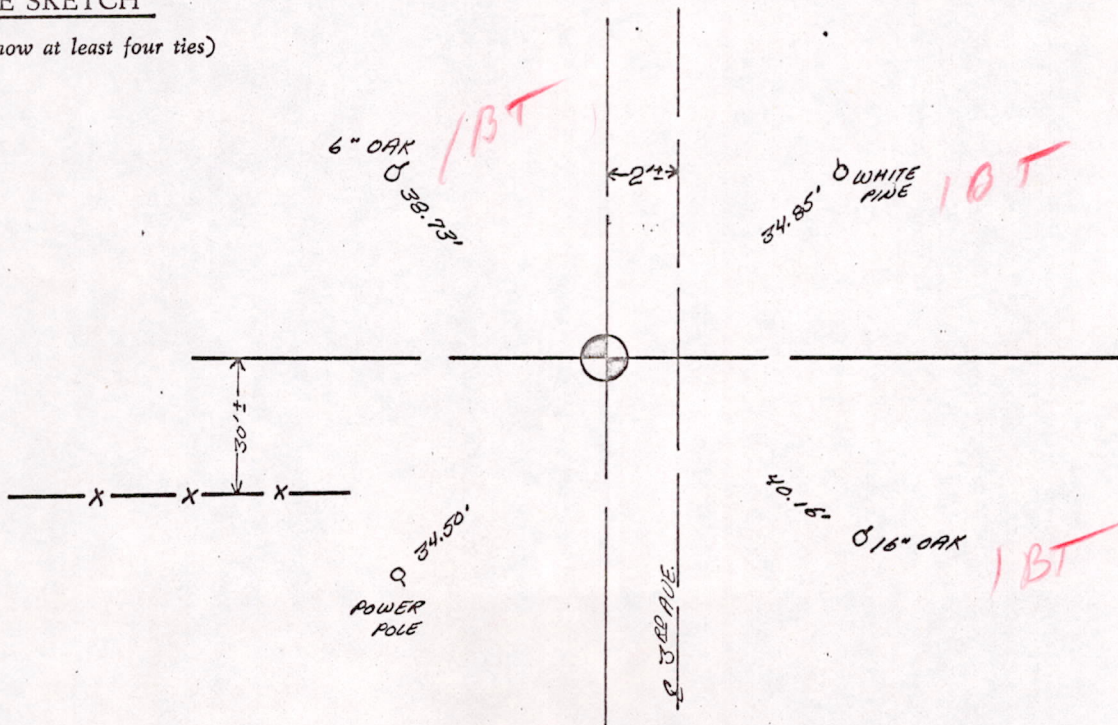
CERTIFIED CORRECT:

Anthony B. Kiedrowski
Registered Land Surveyor

DATE: April '73

TIE SKETCH

(Show at least four ties)



100001081051007