

DESCRIPTION of Section, Quarter Section and Quarter quarter Section Corners of Section

Township _____ North, Range _____ East of _____ Principal Meridian.

N. B. - The variation of needle adopted in establishing corners is _____

No.	Government Corners.	Bearing Trees.	In. dia.	Courses they bear.	Links Distant.	Bearing Trees.	In. dia.	Courses they bear.	Links Distant.
1	N. W. Sec. cor. Identified	New	Blk oak	10 N 83 E	517				
2	N. E. Sec. cor. Identified	New	Whit oak	20 N 55 W	1038				
3	S. E. Sec. cor. Identified	New	Whit oak	10 S 81 E	556 1/2				
4	S. W. Sec. cor. Identified	New	Whit oak	12 S 81 W	479				
5	N. 1/4 Sec. cor. Identified	New	Birch	4 N 66 W	148				
6	E. 1/4 Sec. cor. Identified	old stump new stake	Pine	18 N 84 W	6				
7	S. 1/4 Sec. cor. Identified	New	Whit oak	16 N 74 W	91	White oak	20	N 43 W	115 1/2
8	W. 1/4 Sec. cor. Identified	New	Lam	4 S 17 E	343				
No. SUBDIVISION CORNERS.									
1	Center 1/4 Sec. cor.								
2	North 1/4-1/4s N. W. qr.								
3	East 1/4-1/4s N. W. qr.								
4	South 1/4-1/4s N. W. qr.								
5	West 1/4-1/4s N. W. qr.								
6	Center 1/4-1/4s N. W. qr.								
7	North 1/4-1/4s N. E. qr.								
8	East 1/4-1/4s N. E. qr.								
9	South 1/4-1/4s N. E. qr.								
10	Center 1/4-1/4s N. E. qr.								
11	East 1/4-1/4s S. E. qr.								
12	South 1/4-1/4s S. E. qr.								
13	West 1/4-1/4s S. E. qr.								
14	Center 1/4-1/4s S. E. qr.								
15	South 1/4-1/4s S. W. qr.								
16	West 1/4-1/4s S. W. qr.								
17	Center 1/4-1/4s S. W. qr.								

NAMES OF SWORN ASSISTANTS.

CHAINMEN.	FLAGMEN.	AXMEN.
Jose Victoria J H Piper		

MINUTES.

Of the survey of section 5 - Town 18 - R - 7 - E. All the corners of said section were identified, and New Bearings made. All the quarter Post were identified, or correctly established, and new Bearings made. Starting at the S W corner of said section thence East at 400 V to 1/4 Post Distance 3974 1/2. Thence East to S E corner of section 3974 1/2. Thence North at 345 V to 1/4 Post Distance 4000. Thence North to N E corner of section of town line Distance 3722. Thence West on town line to 1/4 Post Distance 4000. Thence West to N W corner of section Distance 4013. Thence South to 1/4 Post on west side of section Distance 3617. Thence South to S W corner of section Distance 4000. Thence from 1/4 Post on East side of section West at 400 V to 1/4 Post on west side of section Distance 7978. Thence from the 1/4 Post on North side of section to 1/4 Post on South side of section at 400 V. Distance 7634.

M. C. Smith Deputy Co Surveyor

MIS05180700001

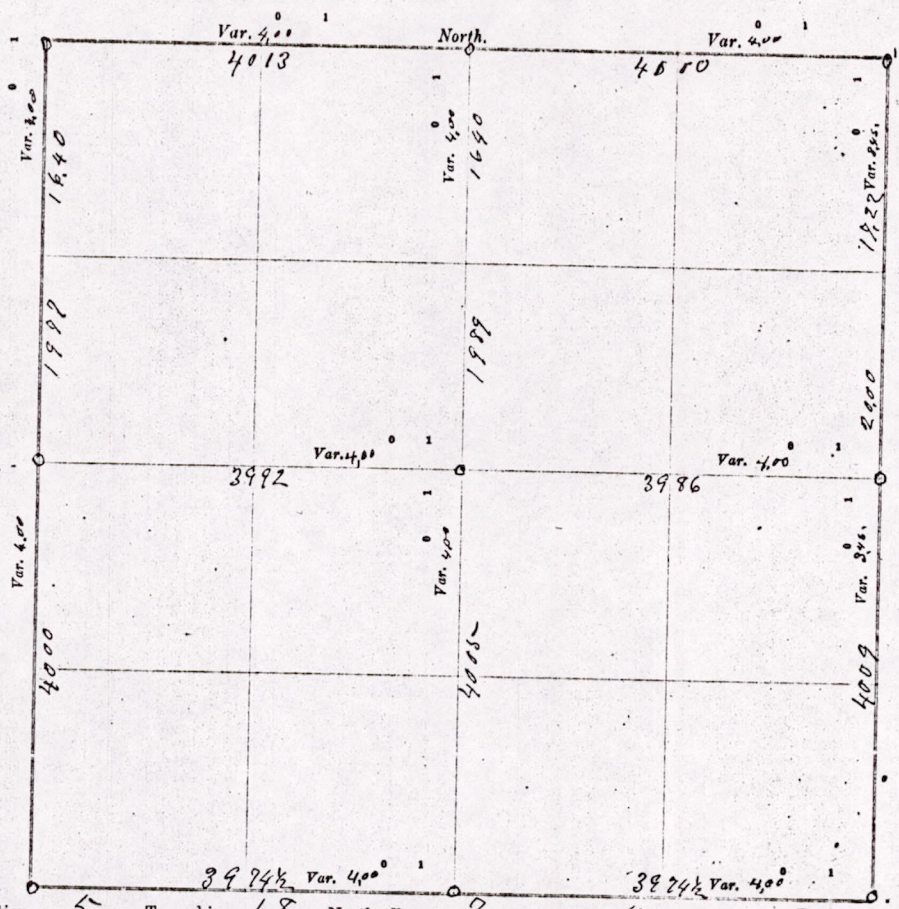
CERTIFICATE OF SURVEY.

STATE OF WISCONSIN, }
ADAMS COUNTY. } ss.

M. G. Smith Deputy Surveyor, in and for the County and State aforesaid, do

hereby certify that I have surveyed and subdivided Section 5 Township 18 North of Range 7 East of 4 Principal Meridian, as represented by the courses and distances on the following plat, and annexed field-notes of survey:

Established the center of the section at the point of intersection of straight quarter lines.
Established all quarter-quarter corners upon the section boundary at proportional distances between known section and quarter section corners, according to the original field-notes of the Government survey.
Established all lost corners at proportionate distances between known corners, according to original field-notes of the Government survey:



Plat of Section 5, Township 18 North, Range 7 East of 4 Principal Meridian. Scale, 80 chains to 6 inches. The figures in red ink are the lengths of the lines as stated in the field-notes of the Government survey.

Declination of the Magnetic Meridian from the True Meridian 4° East.

Surveyed and subdivided August 7 A. D. 1902, in accordance with the State Laws and Instructions of the Commissioner of the General Land Office, and recorded on pages of Register in the County Surveyor's office.

WITNESS my hand this 7th day of August A. D. 1902.

M. G. Smith Deputy Surveyor.

Of the sur
of said sect
quarter Part
made. Sta
to 1/4 Post
thence North
of section 5
1/4 Post Dist
40.13. Then
thence sou
thence from
of section 5
to 1/4 Post on

No.	DESCRIPTION
1	N. W. 1/4
2	N. E. 1/4
3	S. E. 1/4
4	S. W. 1/4
5	N. 1/4 Sec
6	E. 1/4 Sec
7	S. 1/4 Sec
8	W. 1/4 Sec
No.	SUBDIVISION
1	Center 1/4
2	North 1/4
3	East 1/4
4	South 1/4
5	West 1/4
6	Center 1/4
7	North 1/4
8	East 1/4
9	South 1/4
10	Center 1/4
11	East 1/4
12	South 1/4
13	West 1/4
14	Center 1/4
15	South 1/4
16	West 1/4
17	Center 1/4

M1505180700001